



RSA SMS HTTP Plug-In Implementation Guide

Last Modified: June 26, 2013

Partner Information

Product Information	
Partner Name	MultiTech Systems
Web Site	www.multitech.com
Product Name	MultiModem iSMS
Version & Platform	1.50
Product Description	The MultiModem® iSMS intelligent SMS server gives low bandwidth applications the ability to send information by reliable, affordable SMS text messages. The ready-to-use solution simply plugs into the Ethernet network and connects to the wireless network via an integrated quad band GSM modem. Now, applications can send instructions, status updates, alerts or other information to other systems or personnel. Users can even use the MultiModem iSMS server to configure applications in the field.

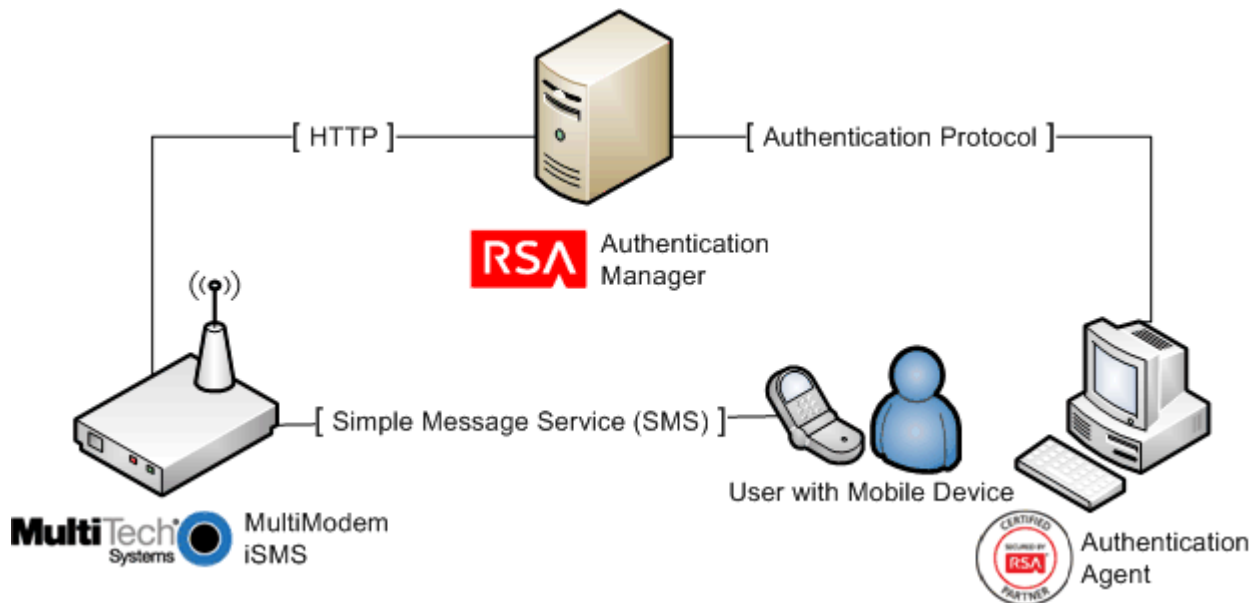


Solution Summary

RSA Authentication Manager can be configured to utilize MultiModem iSMS for delivery of on-demand tokencodes to be used in on-demand authentications.

When a user authenticates to an agent using his/her username and on-demand PIN, the RSA Authentication Manager sends the on-demand tokencode and mobile number to MultiModem iSMS using the HTTP protocol. MultiModem iSMS then delivers the on-demand tokencode to the user's mobile device via Short Message Service (SMS.) The authentication process is completed when the user enters the on-demand tokencode into the agent's prompt for next tokencode.

RSA HTTP Plug-In Supported Functions	
MultiTech MultiModem iSMS	
Integrates with HTTP Plug-In via HTTP	Yes
Integrates with HTTP Plug-In via HTTPS	No



SMS HTTP Plug-In Configuration

RSA Authentication Manager can be configured to integrate a supported Short Message Service (SMS) provider using HTTP, HTTPS, or XML-over-HTTP to deliver on-demand tokencodes to a user's mobile phone.

! > Important: HTTP connections are not secure. Sensitive information, such as a tokencode, may be exposed. For secure connections, configure HTTPS.

Before configuring the HTTP Plug-In, you must locate the configuration parameters and base URL. This information is identified during the configuration of the MultiModem iSMS device. You must include the following elements within your provider's parameters to retrieve data from the corresponding fields.

Required HTTP Plug-In Parameters	
Elements	Description
\$cfg.user	Account User Name
\$cfg.password	Account Password
\$msg.address	User Attribute to Provide SMS Destination
\$msg.message	On-Demand Tokencode Message

SMS HTTP Plug-In is configured in the RSA Authentication Manager's Security Console. The configuration page has three sections:

- Tokencode Delivery by SMS
- SMS Provider Configuration
- SMS HTTP Proxy Configuration (optional)

Tokencode Delivery by SMS

- Mark the Delivery by SMS checkbox to enable the delivery of On-Demand Tokencodes using SMS service.
- Select the User Attribute to Provide SMS Destination from the drop-down menu.
- (Optional) Select the Default country code from the drop-down menu.
- Select HTTP from the SMS Plug-In drop-down menu.

Tokencode Delivery by SMS	
② Delivery by SMS:	<input checked="" type="checkbox"/> Enable the delivery of on-demand tokencodes using SMS service
② User Attribute to Provide SMS Destination: *	-- Choose One --
② Default country code: *	-- Lookup Country Code --
② SMS Plug-In: *	HTTP

SMS Provider Configuration

- Copy the following line into Base URL field and replace [IP or hostname] with the IP or hostname provided by your SMS Provider.
`http://[IP or hostname]/sendmsg`
- Select GET from the HTTP Method drop-down menu.
- Copy the following string into the Parameters field.
`user=$cfg.user&passwd=$cfg.password&cat=1&to=$plus$msg.address&text=$msg.message`
- Enter Account User Name for the SMS Provider.
- Enter Account Password for the SMS Provider.
- Copy the following line into the Success Response Code field.
`ID`
- Copy the following line into the Response Format field.
`(.*) : .*`

The screenshot shows a web form titled "SMS Provider Configuration". It contains several fields with red asterisks indicating required fields:

- Base URL:** A text input field with a red asterisk. Below it, a note says "RSA recommends using HTTPS to increase security."
- Certificate:** A section with a blue "Import Certificate" button and a note: "(If you enter an HTTPS Base URL, you must import a certificate.)"
- HTTP Method:** A dropdown menu currently set to "GET".
- Parameters:** A large text area with a red asterisk, containing the code from the instructions above.
- Account User Name:** A text input field with a red asterisk.
- Account Password:** A text input field with a red asterisk.
- Connection Timeout:** A text input field with "5000" and a "milliseconds" label.
- Success Response Code:** A text input field with a red asterisk.
- Response Format:** A text input field with a red asterisk.

SMS HTTP Proxy Configuration (optional)

Enter the configuration settings for your HTTP Proxy server if you are using one.

The screenshot shows a web form titled "SMS HTTP(S) Proxy Configuration" with four input fields:

- Proxy Hostname:** A text input field.
- Proxy Port:** A text input field.
- Proxy User:** A text input field.
- Proxy Password:** A text input field.

Click Update to save the SMS Configuration.

Partner Product Configuration

Before You Begin

This section provides instructions for configuring the MultiTech MultiModem iSMS with RSA HTTP Plug-In to deliver on-demand tokencodes. This document is not intended to suggest optimum installations or configurations.

It is assumed that the reader has both working knowledge of all products involved, and the ability to perform the tasks outlined in this section. Administrators should have access to the product documentation for all products in order to install the required components.

All MultiTech MultiModem iSMS components must be installed and working prior to the integration. Perform the necessary tests to confirm that this is true before proceeding.

Configure the Multitech MultiModem iSMS

1. Login to the MultiModem iSMS Web Management.
2. Browse to **SMS Service > SMS API > Send API**.
3. Mark the **HTTP Send API Status** checkbox, set the **HTTP Port** and click **Save**.

SMS Services >> SMS API >> Send API

HTTP Send API Configuration

HTTP Send API Status

HTTP Port

Save

4. Browse to **SMS Service > Send SMS Users**, and click **Add**.

SMS Services >> Send SMS Users

Users

Add

5. Enter a **User Name**, **Password** and click **Create**.

SMS Services >> Add a New User

Fields marked with * are mandatory fields.

User Name *

Password *

Create Cancel

 **Note:** This is the Account Username and Account Password used when configuring the RSA HTTP Plug-In.

The Multitech MultiModem iSMS is now configured to send on-demand tokencodes.

Certification Checklist for RSA HTTP Plug-In

Date Tested: June 26, 2013

Product Name	Certification Environment	
	Version Information	Operating System
RSA Authentication Manager	8.0	Virtual Appliance
RSA Authentication Agent	7.2	Windows Server 2008 R2
MultiTech MultiModem iSMS	1.50.7	Proprietary

Mandatory Functionality	
SMS Message Delivered	✓
On-Demand Authentication with SMS tokencode	✓
Success Code Received by HTTP Plug-In	✓

PEW

✓ = Pass ✗ = Fail N/A = Not Applicable to Integration