



RSA SecurID Ready Implementation Guide

Last Modified: March 3, 2015

Partner Information

Product Information	
Partner Name	MRV Communications, Inc.
Web Site	www.mrv.com
Product Name	LX Series
Version & Platform	LX OS 6.0.0
Product Description	The MRV LX-Series Secure Console/Terminal Servers have been specifically designed with a focus on security. The LX-Series advance security protects and manages all aspects of security for traditional Terminal Server, Console Server, and Out Of Band Network applications.



Solution Summary

LX-Series Console and Terminal Servers (in conjunction with RSA SecurID two factor authentication), coupled with the power of RADIUS accounting capabilities provide administrators not only with a strong sense of security, but also a high level of accountability and logging capabilities to traditional serial devices, Console Servers, and Out Of Band Network applications.

RSA Authentication Manager supported features	
LX Series OS 6.0.0	
RSA SecurID Authentication via Native RSA SecurID UDP Protocol	Yes
RSA SecurID Authentication via Native RSA SecurID TCP Protocol	No
RSA SecurID Authentication via RADIUS Protocol	Yes
RSA SecurID Authentication via IPv6	No
On-Demand Authentication via Native SecurID UDP Protocol	Yes
On-Demand Authentication via Native SecurID TCP Protocol	No
On-Demand Authentication via RADIUS Protocol	Yes
Risk-Based Authentication	No
RSA Authentication Manager Replica Support	Yes
Secondary RADIUS Server Support	Yes
RSA SecurID Software Token Automation	No
RSA SecurID SD800 Token Automation	No
RSA SecurID Protection of Administrative Interface	Yes

Agent Host Configuration

To facilitate communication between the LX Product line and the RSA Authentication Manager / RSA SecurID Appliance, an Agent Host record must be added to the RSA Authentication Manager database. The Agent Host record identifies the LX Product line and contains information about communication and encryption.

Include the following information when configuring a UDP-based agent host record.

- Hostname
- IP addresses for network interfaces

 **Note: The UDP-based authentication agent's hostname must resolve to the IP address specified.**

Set the Agent Type to “Standard Agent” when adding the Authentication Agent. This setting is used by the RSA Authentication Manager to determine how communication with LX Product line will occur.

If LX Product line will be communicating with RSA Authentication Manager via RADIUS, then a RADIUS client that corresponds to the agent host record must be created in the RSA Authentication Manager. RADIUS clients are managed using the RSA Security Console.

The following information is required to create a RADIUS client:

- Hostname
- IP Addresses for network interfaces
- RADIUS Secret

 **Note: The RADIUS client's hostname must resolve to the IP address specified.**

Please refer to the appropriate RSA documentation for additional information about creating, modifying and managing Authentication Agents and RADIUS clients.

Partner Product Configuration

Before You Begin

This section provides instructions for configuring the LX Product line with RSA SecurID Authentication. This document is not intended to suggest optimum installations or configurations.

It is assumed that the reader has both working knowledge of all products involved, and the ability to perform the tasks outlined in this section. Administrators should have access to the product documentation for all products in order to install the required components.

All LX Product line components must be installed and working prior to the integration. Perform the necessary tests to confirm that this is true before proceeding.

Understanding the RSA SecurID Local Subscriber Feature

A subscriber account can exist in one of two ways:

- As an LX subscriber with the attributes of that subscriber (if the LX subscriber account exists)
- Or, if the LX subscriber account does *not* exist, as the default (InReach) subscriber.

Under either scenario, the subscriber must have an account on the RSA Authentication Manager server. If the subscriber account also exists on the LX unit, the subscriber is logged on under that account and given the attributes of that account. If the subscriber account does **not** exist on the LX unit, the subscriber is logged on under his RSA Authentication Manager account with the attributes of the default (InReach) account.

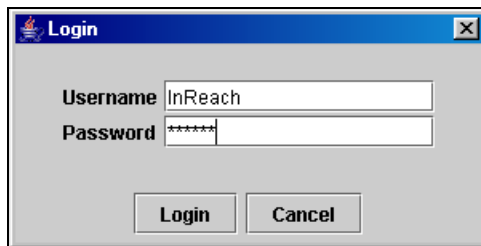
When the RSA Authentication Manager Local Subscriber Feature is set to **only**, the subscriber can only be logged in if the subscriber account is configured on both the LX unit and the RSA Authentication Manager server and the subscriber account on the LX server has the same name as the subscriber account on the RSA Authentication Manager server.

RSA SecurID Authentication Configuration

1. Browse to the LX IP address. (Browser must support Java 1.5.0 rev 15 or higher installed.)

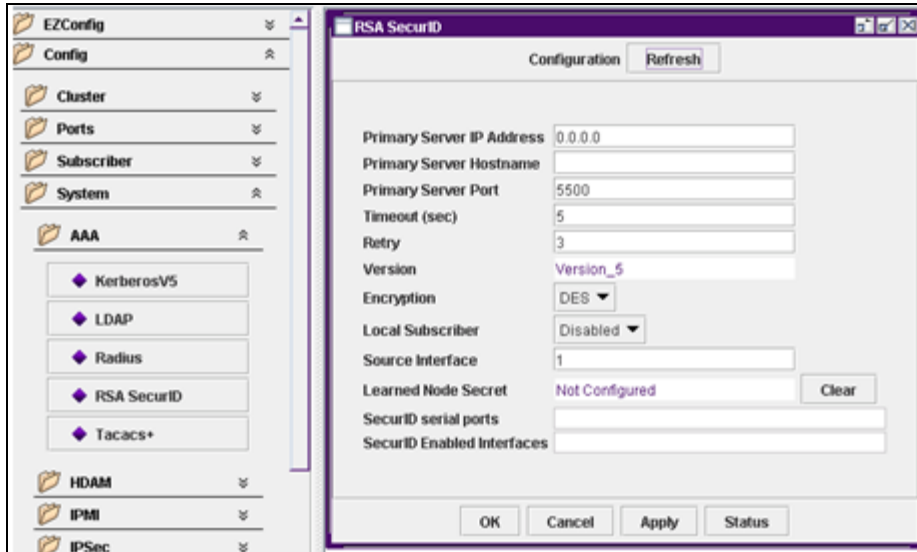


2. Login to the LX unit. (default Username: **InReach** Password: **access**).

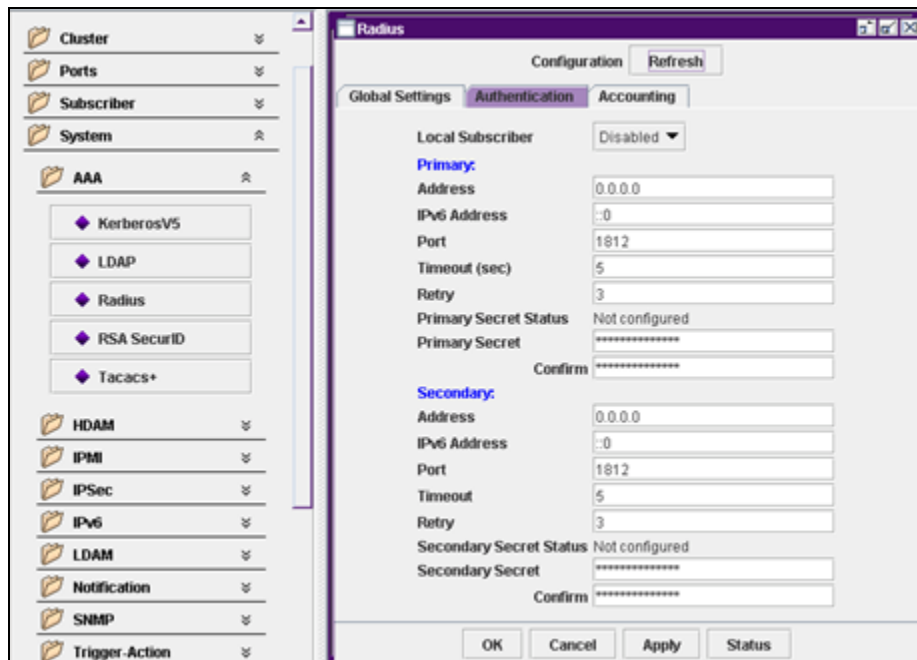


3. Click the **Admin** button on the upper tool bar and enter the admin password (default password: **system**).

4. Select **Config > System > AAA > RSA SecurID**.
5. Enter the **Primary Server IP Address** of your RSA Authentication Manager Server.
6. Enter the **Primary Server Hostname** of your RSA Authentication Manager Server.
7. Select the **Local Subscriber** feature you desire and click OK. Refer to page 4 for a description of Local Subscriber.

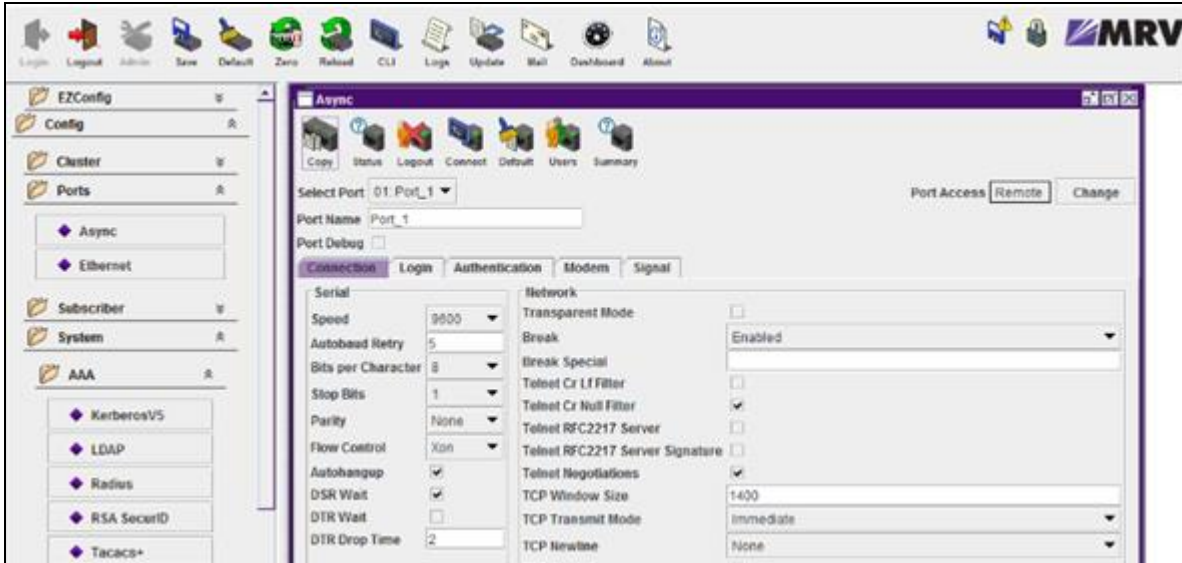


8. If you prefer to use the Radius protocol in lieu of the Native SecurID protocol, select **Radius** under the AAA folder.

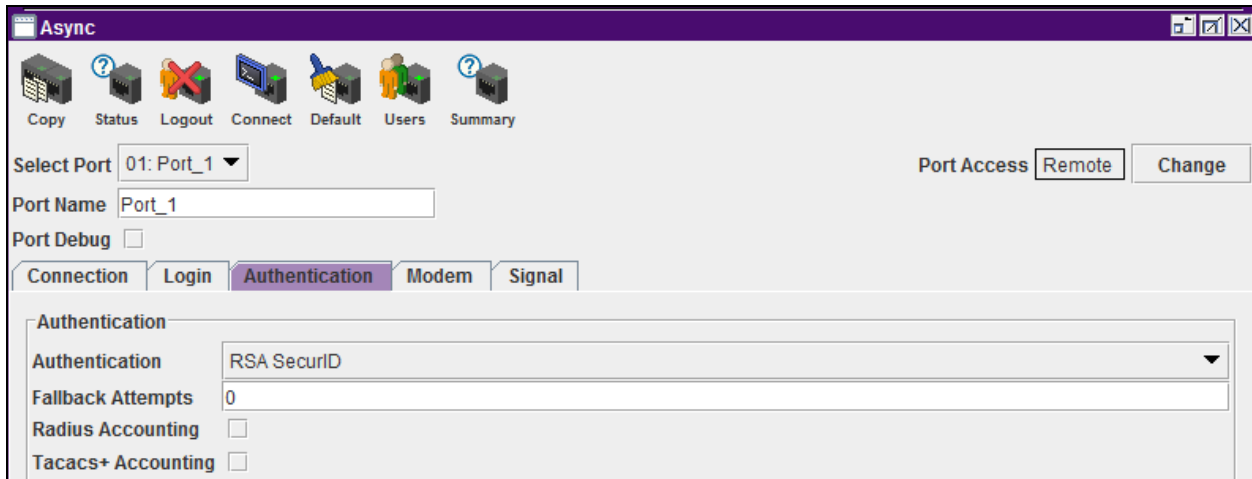


9. Enter the **Primary Address, Primary Secret, Secondary Address, Secondary Secret** and click **Ok**.

10. Choose the **Ports** folder and select the ports and interfaces to enable for RSA SecurID.
11. Select **Ports > Async**, select the desired port from the pull down list.
12. Select **Authentication** tab.



13. In the Authentication field, use the pull down to select the desired authentication method.



RSA SecurID Login Screens

Login screen:

```
Welcome to the MRV Communications' LX Series Server
Port 1 Speed 9600
Login: joe.green
Enter PASSCODE: *****
```

User-defined New PIN:

```
Login: joe.green
Enter PASSCODE: *****
To continue you must enter a new PIN.
Are you ready to enter a new PIN? (y/n) [n] y
Enter a new PIN between 4 and 8 alphanumeric
characters: ****
```

System-generated New PIN:

```
Login: joe.green
Enter PASSCODE: *****
To continue, you must accept a new PIN generated
by the system. Are you ready to have the
system generate your PIN? (y/n) [n] y

Your new PIN is: xykM30lu
Press <Enter> to continue
```

Next Tokencode:

```
Login: joe.green
Enter PASSCODE: *****
Wait for the tokencode to change,
then enter the new tokencode: _
```


Certification Test Checklist for RSA Authentication Manager

Certification Environment

Product Name	Version Information	Operating System
RSA Authentication Manager	8.1	Virtual Appliance
MRV LX Series	6.0.0	Proprietary Linux OS

RSA SecurID Authentication

Date Tested: March 3, 2015

Mandatory Functionality	RSA Native UDP Agent	RSA Native TCP Agent	RADIUS Client
New PIN Mode			
Force Authentication After New PIN	✓	N/A	✓
System Generated PIN	✓	N/A	✓
User Defined (4-8 Alphanumeric)	✓	N/A	✓
User Defined (5-7 Numeric)	✓	N/A	✓
Deny 4 and 8 Digit PIN	✓	N/A	✓
Deny Alphanumeric PIN	✓	N/A	✓
Deny PIN Reuse	✓	N/A	✓
Passcode			
16 Digit Passcode	✓	N/A	✓
4 Digit Fixed Passcode	✓	N/A	✓
Next Tokencode Mode			
Next Tokencode Mode	✓	N/A	✓
On-Demand Authentication			
On-Demand Authentication	✓	N/A	✓
On-Demand New PIN	✓	N/A	✓
Load Balancing / Reliability Testing			
Failover (3-10 Replicas)	✓	N/A	✓
No RSA Authentication Manager	✓	N/A	✓

GLS

✓ = Pass ✗ = Fail N/A = Not Applicable to Integration

Appendix

RSA SecurID Authentication Files

RSA SecurID Authentication Files	
UDP Agent Files	Location
sdconf.rec	/config
sdopts.rec	/config
Node secret	/config
sdstatus.12 / jastatus.12	/config

Partner Integration Details

Partner Integration Details	
RSA SecurID UDP API	5.3.1 for C
RSA SecurID TCP API	N/A
RSA Authentication Agent Type	Standard Agent
RSA SecurID User Specification	Designated Users, All Users, Default Method
Display RSA Server Info	No
Perform Test Authentication	No
Agent Tracing	No