



## RSA SMS HTTP Plug-In Implementation Guide

Last Modified January 23<sup>rd</sup>, 2019

### Partner Information

---

Product Information	
Partner Name	MessageMedia
Web Site	<a href="http://www.message-media.com">www.message-media.com</a>
Product Name	SMS Gateway
Product Description	<p>MessageMedia is a global leader in business SMS services, and an award-winning customer focused organization. The company provides a 100% uptime guarantee for the 14,000 customers that depend on MessageMedia's service reliability and quality support. MessageMedia customers improve business results by leveraging SMS solutions to communicate simply and economically.</p> <p>Established in 2000, the company has offices in USA, UK and Australia. For more information, please visit <a href="http://www.message-media.com">www.message-media.com</a></p>

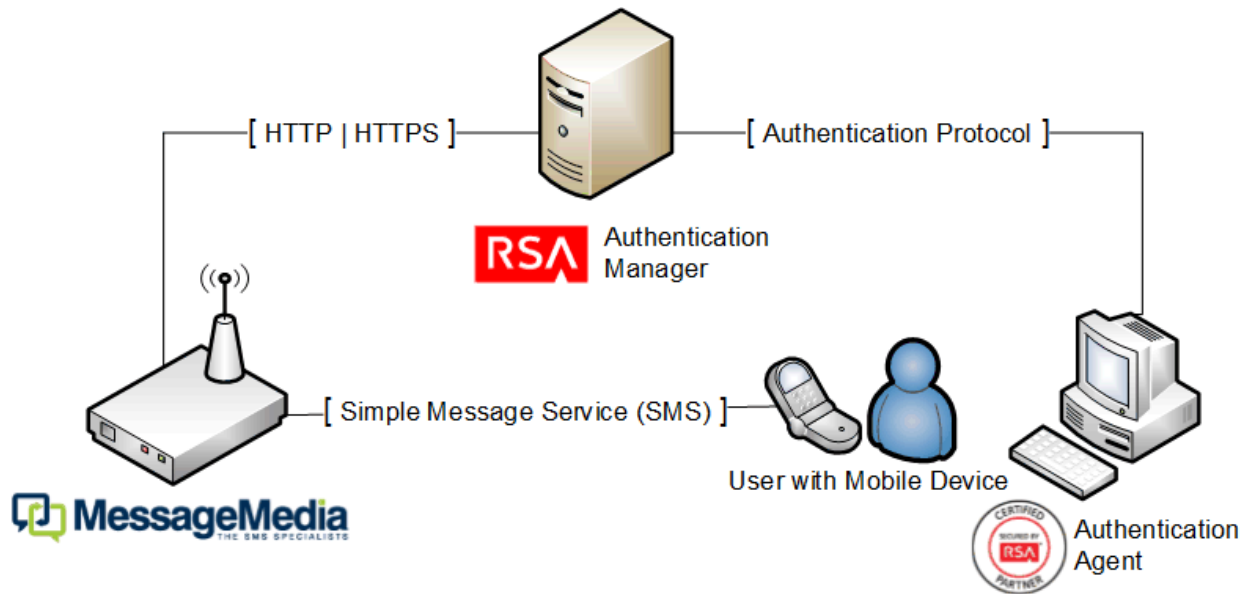


## Solution Summary

RSA Authentication Manager can be configured to utilize MessageMedia for delivery of on-demand tokencodes to be used in on-demand authentications.

When a user authenticates to an agent using his/her username and on-demand PIN, the RSA Authentication Manager sends the on-demand tokencode and mobile number to MessageMedia using the HTTP or HTTPS protocol. MessageMedia then delivers the on-demand tokencode to the user's mobile device via Short Message Service (SMS.) The authentication process is completed when the user enters the on-demand tokencode into the agent's prompt for next tokencode.

RSA HTTP Plug-In Supported Functions	
MessageMedia SMS Gateway	
Integrates with HTTP Plug-In via HTTP	Yes
Integrates with HTTP Plug-In via HTTPS	Yes



## SMS HTTP Plug-In Configuration

RSA Authentication Manager can be configured to integrate a supported Short Message Service (SMS) provider using HTTP, HTTPS, or XML-over-HTTP to deliver on-demand tokencodes to a user's mobile phone.

**! > Important: HTTP connections are not secure. Sensitive information, such as a tokencode, may be exposed. For secure connections, configure HTTPS.**

Before configuring the HTTP Plug-In, you must locate the configuration parameters and base URL. Contact your SMS provider for this information. You must include the following elements within your provider's parameters to retrieve data from the corresponding fields.

Required HTTP Plug-In Parameters	
Elements	Description
\$cfg.user	Account User Name
\$cfg.password	Account Password
\$msg.address	User Attribute to Provide SMS Destination
\$msg.message	On-Demand Tokencode Message

SMS HTTP Plug-In is configured in the RSA Authentication Manager's Security Console. The configuration page has three sections:

- Tokencode Delivery by SMS
- SMS Provider Configuration
- SMS HTTP Proxy Configuration (optional)

### Tokencode Delivery by SMS

- Mark the Delivery by SMS checkbox to enable the delivery of On-Demand Tokencodes using SMS service.
- Select the User Attribute to Provide SMS Destination from the drop-down menu.
- (Optional) Select the Default country code from the drop-down menu.
- Select HTTP from the SMS Plug-In drop-down menu.


Tokencode Delivery by SMS	
<input checked="" type="checkbox"/> Delivery by SMS:	<input checked="" type="checkbox"/> Enable the delivery of on-demand tokencodes using SMS service
<input checked="" type="checkbox"/> User Attribute to Provide SMS Destination: *	-- Choose One --
<input checked="" type="checkbox"/> Default country code: *	-- Lookup Country Code --
<input checked="" type="checkbox"/> SMS Plug-In: *	HTTP

## SMS Provider Configuration

- Copy the following line into Base URL field.

`https://xmlf1.m4u.com.au`

---

 **Note:** For best results, make sure your Internet firewalls permit the following destination MessageMedia IPs from your RSA Authentication Manager(s): 103.226.247.1 through 103.226.247.254, and 54.79.50.63.

---

- Click Import Certificate to browse to and install an SMS certificate if you are configuring your base for HTTPS.

---

 **Note:** If you experience SSL connection issues when connecting with HTTPS, obtain the certificate using the Mozilla Firefox Web browser. Export the certificate as "X.509 Certificate with chain (PEM)", and set the extension to .pem.

---

- Select XML from the HTTP Method drop-down menu.
- Copy the following string into the Parameters field.

```
<?xml version="1.0" encoding="utf-8"?>
<sendMessages xmlns="http://xml.m4u.com.au/2009">
  <authentication>
    <userId>$cfg.user</userId>
    <password>$cfg.password</password>
  </authentication>
  <requestBody>
    <messages>
      <message format="SMS" sequenceNumber="1">
        <recipients>
          <recipient uid="1">msg.address</recipient>
        </recipients>
        <deliveryReport>true</deliveryReport>
        <content>$msg.message</content>
      </message>
    </messages>
  </requestBody>
</sendMessages>
```

- Enter Account User Name for the SMS Provider.
- Enter Account Password for the SMS Provider.
- Copy the following line into the Success Response Code field.

`sent="1"`

- Copy the following line into the Response Format field.

`sent="1"`

**SMS Provider Configuration**

② Base URL: \*   
RSA recommends using HTTPS to increase security.

② Certificate :  (If you enter an HTTPS Base URL, you must import a certificate.)

② HTTP Method: GET ▾

② Parameters: \*

② Account User Name: \*

② Account Password: \*

② Connection Timeout: 5000 milliseconds

② Success Response Code: \*

② Response Format: \*

### SMS HTTP Proxy Configuration (optional)

Enter the configuration settings for your HTTP Proxy server if you are using one.

**SMS HTTP(S) Proxy Configuration**

② Proxy Hostname:

② Proxy Port:

② Proxy User:

② Proxy Password:

Click Update to save the SMS Configuration.

## Certification Checklist for RSA HTTP Plug-In

Date Tested: April 14<sup>th</sup>, 2015

Certification Environment		
Product Name	Version Information	Operating System
<b>RSA Authentication Manager</b>	8.1 SP1	Virtual Appliance
<b>RSA Authentication Agent</b>	7.2	Windows 7 Enterprise 64bit
<b>MessageMedia SMS Gateway</b>	N/A	N/A

Mandatory Functionality	
SMS Message Delivered	✓
On-Demand Authentication with SMS tokencode	✓
Success Code Received by HTTP Plug-In	✓

PEW

✓ = Pass ✗ = Fail N/A = Not Applicable to Integration