



## RSA SMS HTTP Plug-In Implementation Guide

Last Modified: November 25, 2013

### Partner Information

---

Product Information	
Partner Name	Lleida
Web Site	www.lleida.net
Product Name	XMLAPI
Product Description	The XML API allows sending SMS through HTTP queries to Lleida Networks delivery services from secured networks through firewalls that permit the outgoing traffic of standard web browsing. Moreover, by using HTTP protocol and XML format for the data representation a quick integration with the client's application is achievable since almost all programming languages have an excellent support for both.

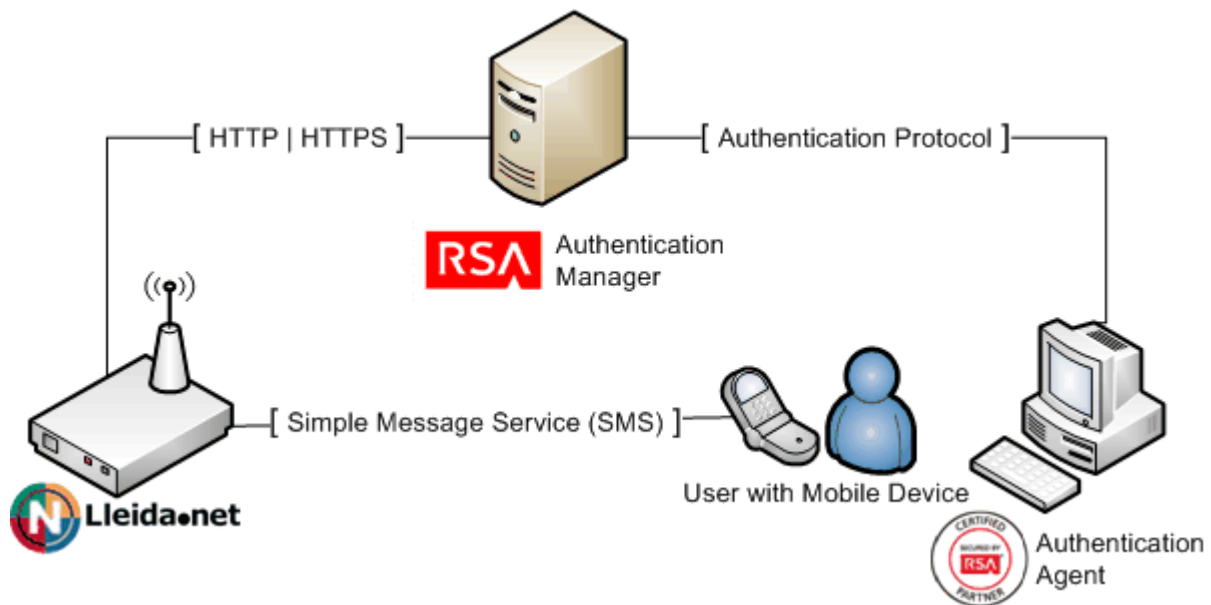


## Solution Summary

RSA Authentication Manager can be configured to utilize Lleida XMLAPI for delivery of on-demand tokencodes to be used in on-demand authentications.

When a user authenticates to an agent using his/her username and on-demand PIN, the RSA Authentication Manager sends the on-demand tokencode and mobile number to Lleida XMLAPI using the HTTP or HTTPS protocol. Lleida XMLAPI then delivers the on-demand tokencode to the user's mobile device via Short Message Service (SMS.) The authentication process is completed when the user enters the on-demand tokencode into the agent's prompt for next tokencode.

RSA HTTP Plug-In Supported Functions	
Lleida XMLAPI	
Integrates with HTTP Plug-In via HTTP	Yes
Integrates with HTTP Plug-In via HTTPS	Yes



## SMS HTTP Plug-In Configuration

RSA Authentication Manager can be configured to integrate a supported Short Message Service (SMS) provider using HTTP, HTTPS, or XML-over-HTTP to deliver on-demand tokencodes to a user's mobile phone.

**! > Important: HTTP connections are not secure. Sensitive information, such as a tokencode, may be exposed. For secure connections, configure HTTPS.**

Before configuring the HTTP Plug-In, you must locate the configuration parameters and base URL. You must include the following elements within your provider's parameters to retrieve data from the corresponding fields.

Required HTTP Plug-In Parameters	
Elements	Description
\$cfg.user	Account User Name
\$cfg.password	Account Password
\$msg.address	User Attribute to Provide SMS Destination
\$msg.message	On-Demand Tokencode Message

SMS HTTP Plug-In is configured in the RSA Authentication Manager's Security Console. The configuration page has three sections:

- Tokencode Delivery by SMS
- SMS Provider Configuration
- SMS HTTP Proxy Configuration (optional)

### Tokencode Delivery by SMS

- Mark the Delivery by SMS checkbox to enable the delivery of On-Demand Tokencodes using SMS service.
- Select the User Attribute to Provide SMS Destination from the drop-down menu.
- (Optional) Select the Default country code from the drop-down menu.
- Select HTTP from the SMS Plug-In drop-down menu.

Tokencode Delivery by SMS	
② Delivery by SMS:	<input checked="" type="checkbox"/> Enable the delivery of on-demand tokencodes using SMS service
② User Attribute to Provide SMS Destination: *	-- Choose One --
② Default country code: *	-- Lookup Country Code --
② SMS Plug-In: *	HTTP

## SMS Provider Configuration

- Copy the following line into Base URL field and replace [IP or hostname] with the IP or hostname provided by your SMS Provider.

```
http://sms.lleida.net/xmlapi/smsgw.cgi
```

- Click Import Certificate to browse to and install an SMS certificate if you are configuring your base for HTTPS.
- Select POST from the HTTP Method drop-down menu.
- Copy the following string into the Parameters field.

```
xml=<?xml version="1.0"
encoding="utf-8" ?> <sms> <user>$cfg.user</user>
<password>$cfg.password</password> <dst> <num>$plus$msg.address</num> </dst>
<txt>$msg.message</txt> </sms>
```

- Enter Account User Name for the SMS Provider.
- Enter Account Password for the SMS Provider.
- Copy the following line into the Success Response Code field.

```
100
```

- Copy the following line into the Response Format field.

```
.+?<status>(.*?)</status>.*
```

**SMS Provider Configuration**

② Base URL:  \*  
RSA recommends using HTTPS to increase security.

② Certificate :  (If you enter an HTTPS Base URL, you must import a certificate.)

② HTTP Method: GET ▾

② Parameters:  \*

② Account User Name:  \*

② Account Password:  \*

② Connection Timeout: 5000 milliseconds

② Success Response Code:  \*

② Response Format:  \*

## SMS HTTP Proxy Configuration (optional)

Enter the configuration settings for your HTTP Proxy server if you are using one.

**SMS HTTP(S) Proxy Configuration**

② Proxy Hostname:

② Proxy Port:

② Proxy User:

② Proxy Password:

Click Update to save the SMS Configuration.

## Certification Checklist for RSA HTTP Plug-In

Date Tested: November 25, 2013

Product Name	Certification Environment	
	Version Information	Operating System
<b>RSA Authentication Manager</b>	8.0	Virtual Appliance
<b>RSA Authentication Agent</b>	7.2	Windows Server 2008 R2
<b>Lleida XMLAPI</b>	N/A	N/A

Mandatory Functionality	
SMS Message Delivered	✓
On-Demand Authentication with SMS tokencode	✓
Success Code Received by HTTP Plug-In	✓

PEW

✓ = Pass ✗ = Fail N/A = Not Applicable to Integration