



## RSA SMS HTTP Plug-In Implementation Guide

Last Modified: June 13, 2013

### Partner Information

---

Product Information	
Partner Name	KPN Callfactory
Web Site	<a href="http://www.callfactory.com">www.callfactory.com</a>
Product Name	SMS Gateway
Product Description	KPN Callfactory offers a highly reliable and secure SMS Gateway service with direct connections to all SMSC's of the mobile carriers in The Netherlands and Belgium Our SMS infrastructure offer redundancy with flexible routing and queue features to ensure a high availability and throughput of SMS messages. Included with the account are real-time status reports and web based management tools to help you manage the SMS flow.

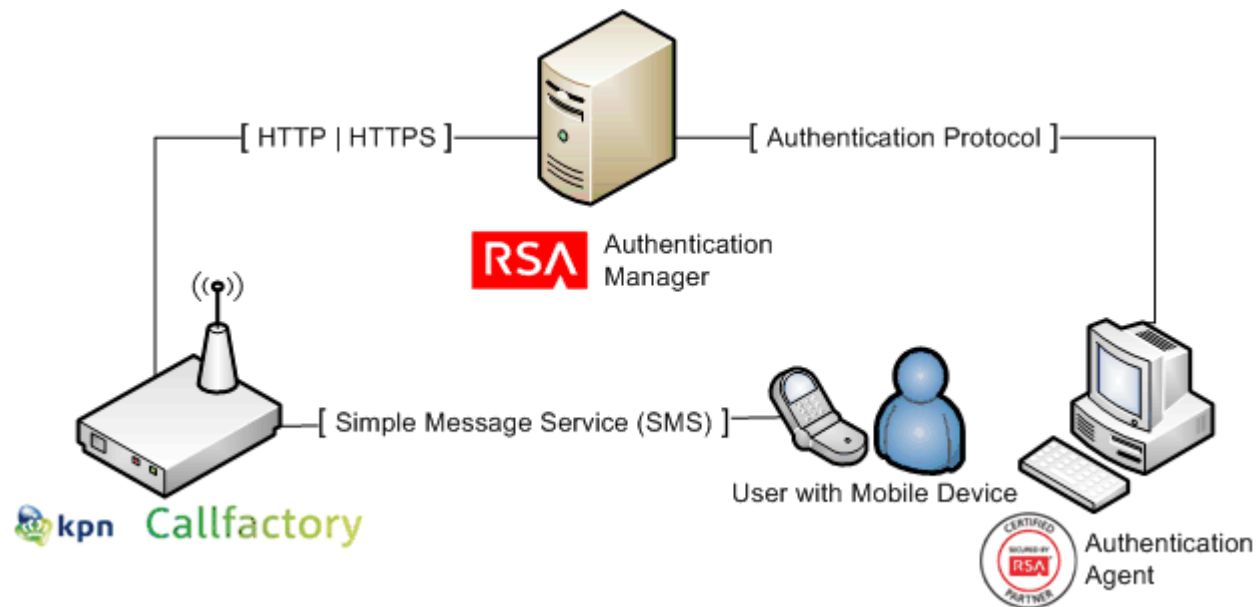


## Solution Summary

RSA Authentication Manager can be configured to utilize KPN Callfactory for delivery of on-demand tokencodes to be used in on-demand authentications.

When a user authenticates to an agent using his/her username and on-demand PIN, the RSA Authentication Manager sends the on-demand tokencode and mobile number to KPN Callfactory using the HTTP or HTTPS protocol. KPN Callfactory then delivers the on-demand tokencode to the user's mobile device via Short Message Service (SMS.) The authentication process is completed when the user enters the on-demand tokencode into the agent's prompt for next tokencode.

RSA HTTP Plug-In Supported Functions	
KPN Callfactory	
Integrates with HTTP Plug-In via HTTP	Yes
Integrates with HTTP Plug-In via HTTPS	Yes



## SMS HTTP Plug-In Configuration

RSA Authentication Manager can be configured to integrate a supported Short Message Service (SMS) provider using HTTP, HTTPS, or XML-over-HTTP to deliver on-demand tokencodes to a user's mobile phone.

**! > Important: HTTP connections are not secure. Sensitive information, such as a tokencode, may be exposed. For secure connections, configure HTTPS.**

Before configuring the HTTP Plug-In, you must locate the configuration parameters and base URL. Contact your SMS provider for this information. You must include the following elements within your provider's parameters to retrieve data from the corresponding fields.

Required HTTP Plug-In Parameters	
Elements	Description
\$cfg.user	Account User Name
\$cfg.password	Account Password
\$msg.address	User Attribute to Provide SMS Destination
\$msg.message	On-Demand Tokencode Message

SMS HTTP Plug-In is configured in the RSA Authentication Manager's Security Console. The configuration page has three sections:

- Tokencode Delivery by SMS
- SMS Provider Configuration
- SMS HTTP Proxy Configuration (optional)

### Tokencode Delivery by SMS

- Mark the Delivery by SMS checkbox to enable the delivery of On-Demand Tokencodes using SMS service.
- Select the User Attribute to Provide SMS Destination from the drop-down menu.
- (Optional) Select the Default country code from the drop-down menu.
- Select HTTP from the SMS Plug-In drop-down menu.

Tokencode Delivery by SMS	
② Delivery by SMS:	<input checked="" type="checkbox"/> Enable the delivery of on-demand tokencodes using SMS service
② User Attribute to Provide SMS Destination: *	-- Choose One --
② Default country code: *	-- Lookup Country Code --
② SMS Plug-In: *	HTTP

## SMS Provider Configuration

- Copy the following line into Base URL field and replace <smgateway> with the value provided by your SMS Provider.

`https://sms-1.quinsy.net:8106/callfact/<smgateway>`

- Click Import Certificate to browse to and install an SMS certificate if you are configuring your base for HTTPS.
- Select GET from the HTTP Method drop-down menu.
- Copy the following string into the Parameters field.

`requesttype=0&oactype=0&oadc=<shortcode>&numbers=$msg.address&body=$msg.message`

---

**! > Important: Additional parameters may be necessary depending on your location. Please refer to KPN Callfactory API documentation for more information.**

---

- Enter Account User Name for the SMS Provider.
- Enter Account Password for the SMS Provider.

---

**! > Important: Account Username and Account Password fields are not used by KPN Callfactory, however they are required fields in the HTTP Plug-In. You can enter any values into these fields as long as they are accepted by the form.**

**Example: Account Username = user and Account Password = pass**

---

- Copy the following line into the Success Response Code field.

OK

- Copy the following line into the Response Format field.

`. * ] ( . * ) \ { . *`

The screenshot shows the 'SMS Provider Configuration' form with the following fields and values:

- Base URL:** \* [Empty field] (Note: RSA recommends using HTTPS to increase security.)
- Certificate:** [Import Certificate button] (If you enter an HTTPS Base URL, you must import a certificate.)
- HTTP Method:** GET
- Parameters:** \* [Empty text area]
- Account User Name:** \* [Empty field]
- Account Password:** \* [Empty field]
- Connection Timeout:** 5000 milliseconds
- Success Response Code:** \* [Empty field]
- Response Format:** \* [Empty field]

### SMS HTTP Proxy Configuration (optional)

Enter the configuration settings for your HTTP Proxy server if you are using one.

SMS HTTP(S) Proxy Configuration	
Proxy Hostname:	<input type="text"/>
Proxy Port:	<input type="text"/>
Proxy User:	<input type="text"/>
Proxy Password:	<input type="text"/>

Click Update to save the SMS Configuration.

## Certification Checklist for RSA HTTP Plug-In

Date Tested: June 13, 2013

Product Name	Certification Environment	
	Version Information	Operating System
<b>RSA Authentication Manager</b>	8.0	Virtual Appliance
<b>RSA Authentication Agent</b>	7.2	Windows Server 2008 R2
<b>KPN Callfactory</b>	N/A	N/A

Mandatory Functionality	
SMS Message Delivered	✓
On-Demand Authentication with SMS tokencode	✓
Success Code Received by HTTP Plug-In	✓

PEW

✓ = Pass ✗ = Fail N/A = Not Applicable to Integration