



RSA SMS HTTP Plug-In Implementation Guide

Last Modified: July 30th, 2015

Partner Information

Product Information	
Partner Name	CM
Web Site	www.cmtelecom.com , www.cm.nl
Product Name	SMS Gateway
Product Description	The SMS Gateway enables clients to connect directly to CM's platform to integrate SMS into their own systems and applications. The SMS Gateway supports all common protocols such as SMPP, HTTP(S), UCP and CIMD2.

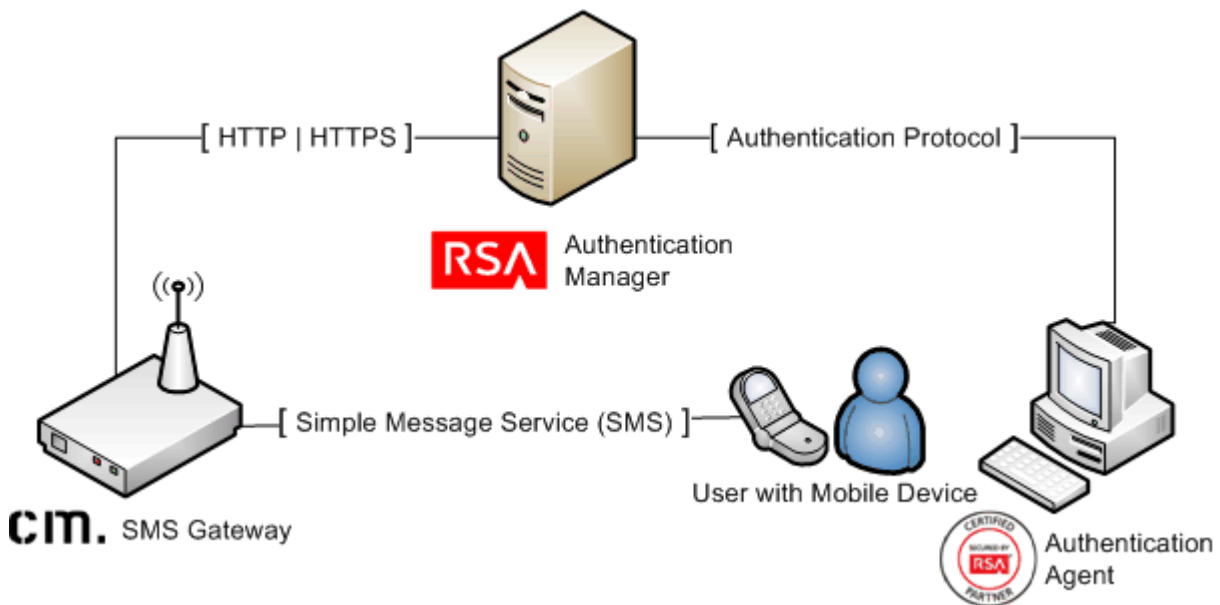
cm.

Solution Summary

RSA Authentication Manager can be configured to utilize CM SMS Gateway for delivery of on-demand tokencodes to be used in on-demand authentications.

When a user authenticates to an agent using his/her username and on-demand PIN, the RSA Authentication Manager sends the on-demand tokencode and mobile number to CM SMS Gateway using the HTTP or HTTPS protocol. CM SMS Gateway then delivers the on-demand tokencode to the user's mobile device via Short Message Service (SMS.) The authentication process is completed when the user enters the on-demand tokencode into the agent's prompt for next tokencode.

RSA HTTP Plug-In Supported Functions	
CM SMS Gateway	
Integrates with HTTP Plug-In via HTTP	Yes
Integrates with HTTP Plug-In via HTTPS	Yes



SMS HTTP Plug-In Configuration

RSA Authentication Manager can be configured to integrate a supported Short Message Service (SMS) provider using HTTP, HTTPS, or XML-over-HTTP to deliver on-demand tokencodes to a user's mobile phone.

! > Important: HTTP connections are not secure. Sensitive information, such as a tokencode, may be exposed. For secure connections, configure HTTPS.

Before configuring the HTTP Plug-In, you must locate the configuration parameters and base URL. You must include the following elements within your provider's parameters to retrieve data from the corresponding fields.

Required HTTP Plug-In Parameters	
Elements	Description
\$cfg.user	Account User Name
\$cfg.password	Account Password
\$msg.address	User Attribute to Provide SMS Destination
\$msg.message	On-Demand Tokencode Message

SMS HTTP Plug-In is configured in the RSA Authentication Manager's Security Console. The configuration page has three sections:

- Tokencode Delivery by SMS
- SMS Provider Configuration
- SMS HTTP Proxy Configuration (optional)

Tokencode Delivery by SMS

- Mark the Delivery by SMS checkbox to enable the delivery of On-Demand Tokencodes using SMS service.
- Select the User Attribute to Provide SMS Destination from the drop-down menu.
- (Optional) Select the Default country code from the drop-down menu.
- Select HTTP from the SMS Plug-In drop-down menu.

Tokencode Delivery by SMS	
② Delivery by SMS:	<input checked="" type="checkbox"/> Enable the delivery of on-demand tokencodes using SMS service
② User Attribute to Provide SMS Destination: *	-- Choose One --
② Default country code: *	-- Lookup Country Code --
② SMS Plug-In: *	HTTP

SMS Provider Configuration

- Copy the following line into the Base URL field for HTTP:
`http://gw01.cm.n1/gateway.ashx`
- Copy the following line into the Base URL field for HTTPS:
`https://sgw01.cm.n1/gateway.ashx`
- Click Import Certificate to browse to and install an SMS certificate if you are configuring your base for HTTPS.
- Select XML from the HTTP Method drop-down menu.
- Copy the following string into the Parameters field.

```
<?xml version="1.0"?>
<MESSAGES>
<CUSTOMER ID="[CUSTOMER]" />
<USER LOGIN="$cfg.user" PASSWORD="$cfg.password"/>
<MSG>
<FROM>[ORIGINATOR]</FROM>
<BODY TYPE="TEXT">$msg.message</BODY>
<TO>00$msg.address</TO>
</MSG>
<EXPLICITRESPONSE>1</EXPLICITRESPONSE>
</MESSAGES>
```

- Enter Account User Name for the SMS Provider.
- Enter Account Password for the SMS Provider.
- Copy the following line into the Success Response Code field.

OK

- Copy the following line into the Response Format field.

(. *):

SMS Provider Configuration

Base URL: * RSA recommends using HTTPS to increase security.

Certificate: (If you enter an HTTPS Base URL, you must import a certificate.)

HTTP Method: GET

Parameters: *

Account User Name: *

Account Password: *

Connection Timeout: 5000 milliseconds

Success Response Code: *

Response Format: *

SMS HTTP Proxy Configuration (optional)

Enter the configuration settings for your HTTP Proxy server if you are using one.

SMS HTTP(S) Proxy Configuration	
Proxy Hostname:	<input type="text"/>
Proxy Port:	<input type="text"/>
Proxy User:	<input type="text"/>
Proxy Password:	<input type="text"/>

Click Update to save the SMS Configuration.

Certification Checklist for RSA HTTP Plug-In

Date Tested: July 29th, 2015

Certification Environment		
Product Name	Version Information	Operating System
RSA Authentication Manager	8.1 SP1	Virtual Appliance
RSA Authentication Agent	7.2	Windows 7 enterprise 64bit
CM SMS Gateway	N/A	N/A

Mandatory Functionality	
SMS Message Delivered	✓
On-Demand Authentication with SMS tokencode	✓
Success Code Received by HTTP Plug-In	✓

PEW

✓ = Pass ✗ = Fail N/A = Not Applicable to Integration