

RSA SecurID[®] and Citrix Solutions Guide



Solutions Guide



CONTENTS

Preface	3
Citrix Receiver SecurID In-Client Solution	3
User Experience	3
Required Components	4
Configuration Details	5
Citrix Client SecurID In-Browser Solution.....	5
User Experience	6
Required Components	6
Configuration Details	7
Citrix Access Gateway (CAG) Performs Authentication	7
Citrix Web Interface Performs Authentication	8
Citrix Receiver Software Token Automation.....	9
User Experience	9
Required Components	9
Configuration Details	9
Citrix Client RSA Windows Agent Solution.....	10
User Experience	10
Required Components	10
Configuration Details	10

PREFACE

The purpose of this document is to provide an overview for Citrix RSA SecurID solutions. This overview explains how the user experience, components, and configuration of those components differ between solutions.

This document contains many solution-specific configuration details, but is not a step-by-step guide for configuring RSA SecurID authentication in each solution type. Please consult Citrix eDocs Library and Secured by RSA Solution Gallery for detailed information.

CITRIX RECEIVER SECURID IN-CLIENT SOLUTION

This solution adds RSA SecurID authentication to Citrix Receiver. The RSA SecurID passcode is added as an additional field on the logon screen within Citrix Receiver. To logon, the user provides their username, Microsoft Windows password and RSA SecurID passcode. When the user clicks/taps the published application, the application is opened within the Citrix Receiver client.

You must configure Citrix Access Gateway as an authentication agent for Authentication Manager in order to perform RSA SecurID Authentication within Receiver.

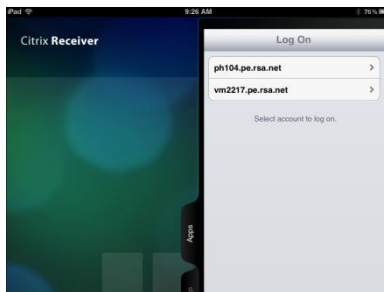
User Experience

The following screenshots show the user experience for this solution using Citrix Receiver on an Apple iPad.

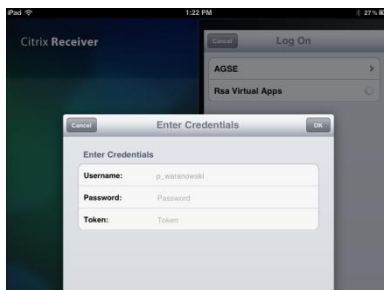
1. Launch Citrix Receiver App from home screen.



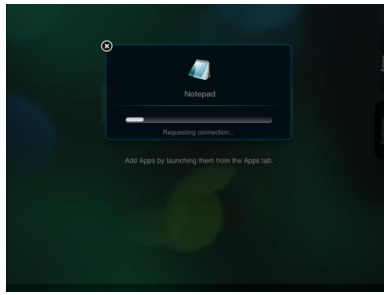
2. Select the account to log on to.



3. Passcode.



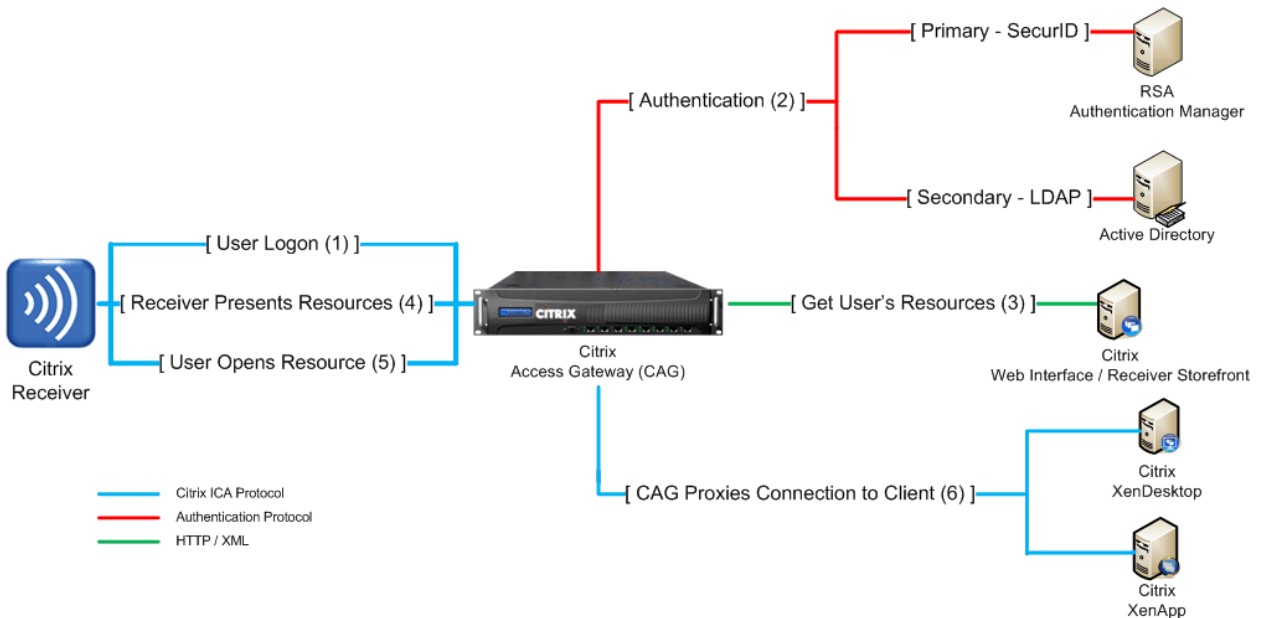
4. Launch the desired published application.



Required Components

This solution requires the use of Citrix Access Gateway to act as the authentication agent to the RSA Authentication Manager server. Citrix Web Interface or Citrix Receiver Storefront is configured using a Service site to enumerate published applications and/or desktops to Citrix Receiver.

Citrix Access Gateway Standard, Advanced and Enterprise editions are all supported. Standard and Advanced editions only support RSA SecurID authentication for Receiver via the native RSA authentication API whereas Enterprise edition only supports RSA SecurID authentication via RADIUS. Citrix Secure Gateway is not supported in this solution.



Citrix Receiver SecurID In-Client Solution

Configuration Details

Citrix Receiver

- In the account connection profile, set the authentication type to "Domain + Security Token".

Citrix Web Interface

- Configure a new Web Interface Service site.
- Set the Access Method to 'Gateway direct'.
- Leave Authentication Methods on their default settings.

Citrix Access Gateway Standard and Advanced Editions

- Configure the Primary Authentication as RSA SecurID and the Secondary Authentication as LDAP for the realm to which Citrix Receiver will connect.
- Configure the Gateway Portal to 'Redirect to Web Interface' and provide the WI server's IP or FQDN and path to the config.xml file on your Web Interface service site.

Note: Please refer to the Citrix Access Gateway SecurID Authentication RSA SecurID Ready Implementation Guide for more information on configuring Citrix Access Gateway with RSA SecurID.

Citrix Access Gateway Enterprise Edition

- Configure the Primary Authentication Policy as RSA SecurID and the Secondary Authentication Policy as LDAP for the virtual server to which Citrix Receiver will connect.
- Configure the Access Gateway Session Profile Web Interface Address setting to the full path to the config.xml on your Web Interface service site.

Note: Please refer to the Citrix Access Gateway SecurID Authentication RSA SecurID Ready Implementation Guide for more information on configuring Citrix Access Gateway with RSA SecurID.

Citrix XenApp / XenDesktop

- There is no additional configuration of these components in order to enable RSA SecurID authentication on Citrix Receiver.

RSA Authentication Manager

- When using Citrix Access Gateway Standard and Advanced, configure a Standard Agent using the FQDN and IP address of the Citrix Access Gateway system.
- When using Citrix Access Gateway Enterprise Edition, configure a RADIUS client and associated RSA Agent using the FQDN and IP address of the Citrix Access Gateway system.

CITRIX CLIENT SECURID IN-BROWSER SOLUTION

This solution adds RSA SecurID authentication for users who logon to Citrix systems via a Web browser. The RSA SecurID passcode field is added to the logon form on the Citrix logon web page. To logon, the user provides their username, Windows password and RSA SecurID passcode. When the user opens the link to the published application, the Citrix client launches and opens the connection to the published application or desktop.

Solution Gallery

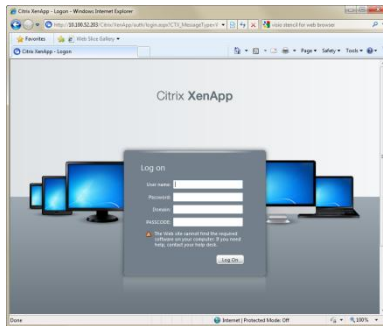
Search the Secured by RSA® Certified Partner Solutions page on EMC Solutions Gallery for SecurID Ready Implementation Guides for Citrix Products.

<http://www.securedbyrsa.com>

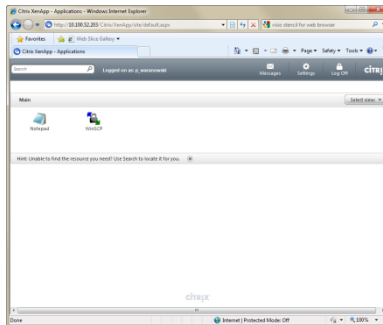
User Experience

The following screenshots show the user experience for this solution using Internet Explorer and Citrix Online Web Plug-In where authentication happens at the Web Interface.

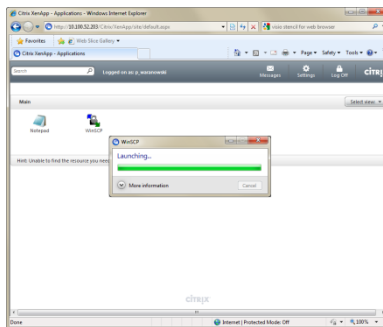
1. Open a Web browser, browse to the Citrix logon page and enter your credentials.



2. View list of enumerated published applications and/or desktops.



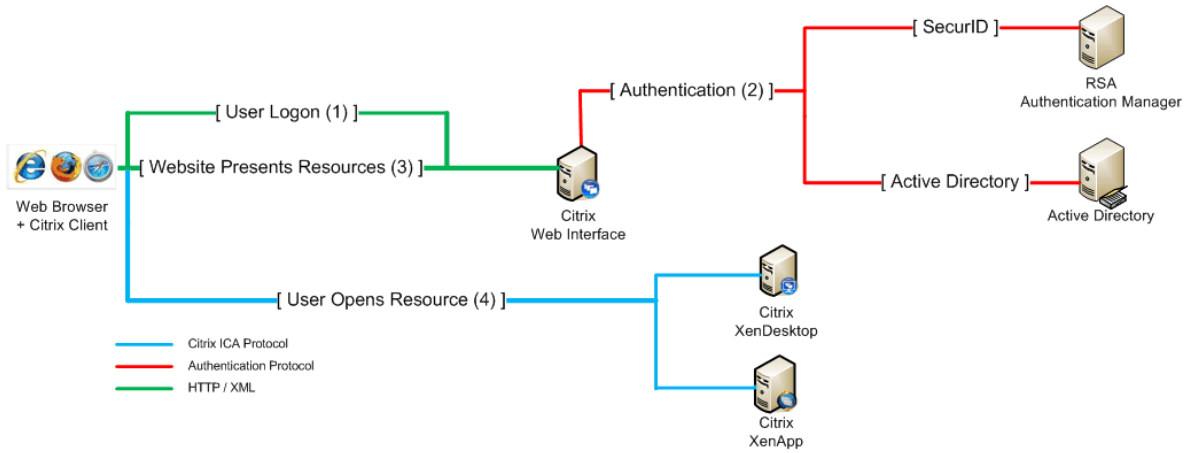
3. Click to launch the desired published application.



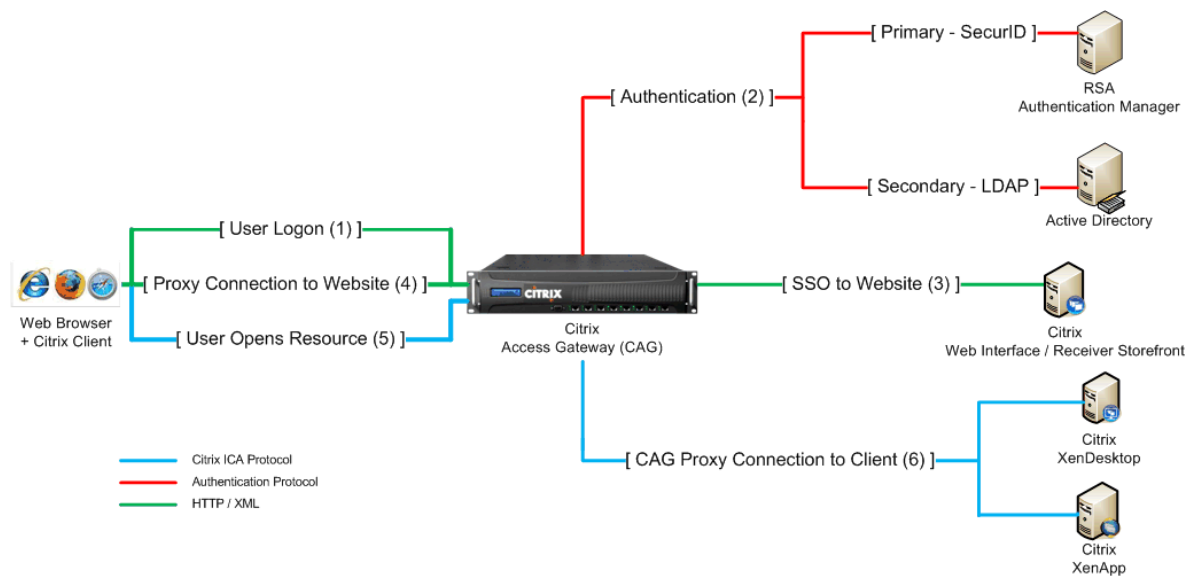
Required Components

This solution can use either Citrix Access Gateway or the Citrix Web Interface to act as the authentication agent to the RSA Authentication Manager server. Citrix Web Interface is configured using a Web site to enumerate published applications and/or desktops in the user's Web browser. A compatible Web browser and Citrix client must be installed on the user's system.

Citrix Access Gateway Standard, Advanced and Enterprise editions are supported. Citrix Secure Gateway is supported in this solution type where Citrix Web Interface is acting as the Authentication Agent. Citrix Access Gateway Enterprise can also be configured to pass through and allow Citrix Web Interface to perform authentication.



Citrix Client SecurID In-Browser Solution (Authentication at Web Interface)



Citrix Client SecurID In-Browser Solution (Authentication at CAG)

Configuration Details

The configuration of components varies between deployment types. There are two main deployment types for this solution, the type where Citrix Access Gateway performs authentication and the type where Web interface performs authentication.

Citrix Access Gateway (CAG) Performs Authentication

Citrix Client

- No configuration necessary. The only requirement is that Citrix client is associated with the .ica file extension and launches when the browser downloads the ica file for the chosen published application or desktop.
- See Citrix eDocs library for supported Citrix clients.

Citrix Web Interface

- Configure a new Web Interface Web site.
- Specify Point of Authentication to 'At Access Gateway'.
- Set the Access Method to 'Gateway direct'.

Authentication

Browser-based RSA SecurID Authentication can be performed at either Citrix Access Gateway or Citrix Web Interface

Citrix Access Gateway Standard and Advanced Editions

- Configure the Primary Authentication as RSA SecurID and the Secondary Authentication as LDAP for the realm to which Citrix Receiver will connect.
- Configure the Gateway Portal to 'Redirect to Web Interface' and provide the WI server's IP or FQDN and path to your Web Interface Web site.

Note: Please refer to the Citrix Access Gateway SecurID Authentication RSA SecurID Ready Implementation Guide for more information on configuring Citrix Access Gateway with RSA SecurID.

Citrix Access Gateway Enterprise Edition

- Configure the Primary Authentication Policy as RSA SecurID and the Secondary Authentication Policy as LDAP for the virtual server to which Citrix Receiver will connect.
- Configure the Access Gateway Session Profile Web Interface Address setting to the full path to your Web Interface service site.

Note: Please refer to the Citrix Access Gateway SecurID Authentication RSA SecurID Ready Implementation Guide for more information on configuring Citrix Access Gateway with RSA SecurID.

Citrix XenApp / XenDesktop

- There is no additional configuration of these components in order to enable RSA SecurID authentication on Citrix Receiver.

RSA Authentication Manager

- When using Citrix Access Gateway Standard and Advanced, configure a Standard Agent using the FQDN and IP address of the Citrix Access Gateway system.
- When using Citrix Access Gateway Enterprise Edition, configure a RADIUS client and associated RSA Agent using the FQDN and IP address of the Citrix Access Gateway system.

Citrix Web Interface Performs Authentication

Citrix Client

- No configuration necessary. The only requirement is that Citrix client is associated with the .ica file extension and launches when the web browser downloads the ica file for the chosen published application or desktop.
- See Citrix eDocs library for supported Citrix clients.

Citrix Web Interface

- Configure a new Web Interface Web site.
- Configure Authentication Methods Two-factor setting to RSA SecurID.

Note: Please refer to the Citrix Web interface SecurID Authentication RSA SecurID Ready Implementation Guide for more information on configuring Citrix Web Interface with RSA SecurID.

Citrix Access Gateway Enterprise Edition (not required)

- Disable Authentication Policies (pass through)

Citrix XenApp / XenDesktop

- There is no additional configuration of these components in order to enable RSA SecurID authentication on Citrix Receiver.

RSA Authentication Manager

- Configure a Standard Agent using the FQDN and IP address of the Citrix Web Interface system.

CITRIX RECEIVER SOFTWARE TOKEN AUTOMATION

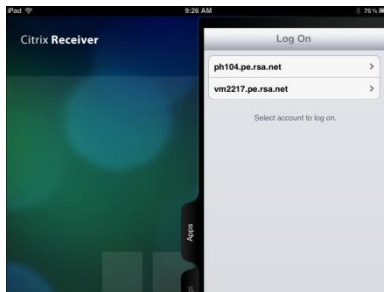
This solution allows the user to import an RSA Software Token into Citrix Receiver for use during RSA SecurID authentications. During an authentication, the end user enters their username and RSA SecurID PIN. Citrix Receiver takes the PIN and combines it with the imported token's current tokencode to form the user's passcode, and sends the passcode for authentication.

User Experience

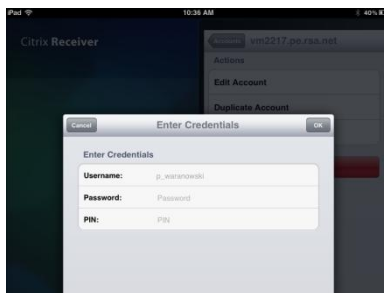
1. Launch Citrix Receiver App from home screen.



2. Select the account to log on.



3. Enter Username, Password and PIN.



Required Components

This solution only works with the Citrix Receiver RSA SecurID In-Client Solution. In addition to the components required by that solution, the RSA SecurID user must have a software token provisioned and software token automation must be enabled within Citrix Receiver.

Configuration Details

Citrix Receiver

- Import a software token into Citrix Receiver.
- Enable software token automation.

RSA Authentication Manager

- Use the RSA Security Console to provision an RSA Software Token for the user.

RSA Software Token

- Must be configured to a token type supported by Citrix Receiver.

Note: Please refer to the Citrix Receiver Software Token Implementation Guide for more information regarding supported versions, token types and provisioning methods for this solution.

Citrix Client RSA Windows Agent Solution

This solution uses the RSA Windows Agent Credential Manager to prompt the user for RSA SecurID authentication when the published application and/or desktop is launched. This solution works with every Citrix client deployment type.

User Experience

1. The user must first logon to Citrix system to enumerate their published applications and/or desktops.
2. When the user selects the application or desktop to open, the RSA SecurID Credential Manager prompts the user for RSA SecurID authentication.



3. Access to the application is permitted after successful RSA SecurID authentication.

Required Components

This solution displays the RSA Authentication Agent's Credential Manager when the Citrix client connects to the Citrix XenApp or XenDesktop server. All Citrix clients connect to Citrix XenApp and XenDesktop servers using the same protocol (ICA), so all other components are not relevant for this solution.

Configuration Details

Citrix XenApp or XenDesktop Server

- Install the RSA Authentication Agent on the server where the published application and/or desktop resides.

RSA Authentication Agent

- Configure the 'Challenge Users' section to challenge the appropriate Citrix users

RSA Authentication Manager

- Configure a Standard Agent using the FQDN and IP address of the Citrix XenApp or XenDesktop server.

Note: Please refer to the Citrix XenApp SecurID Ready Implementation Guide for more information on configuring Citrix XenApp for SecurID authentication.

ABOUT RSA

RSA, The Security Division of EMC, is the premier provider of security, risk and compliance management solutions for business acceleration. RSA helps the world's leading organizations succeed by solving their most complex and sensitive security challenges. These challenges include managing organizational risk, safeguarding mobile access and collaboration, proving compliance, and securing virtual and cloud environments.

Combining business-critical controls in identity assurance, encryption & key management, SIEM, Data Loss Prevention and Fraud Protection with industry leading eGRC capabilities and robust consulting services, RSA brings visibility and trust to millions of user identities, the transactions that they perform and the data that is generated. For more information, please visit www.RSA.com and www.EMC.com.

EMC², EMC, RSA and the RSA logo are registered trademarks or trademarks of EMC Corporation in the United States and other countries. All other trademarks used herein are the property of their respective owners. ©2011 EMC Corporation. All rights reserved. Published in the USA.

www.emc.com/rsa

