

RSA® ARCHER®
GRC Platform
Implementation Guide

1touch.io DLM Pro 1.0

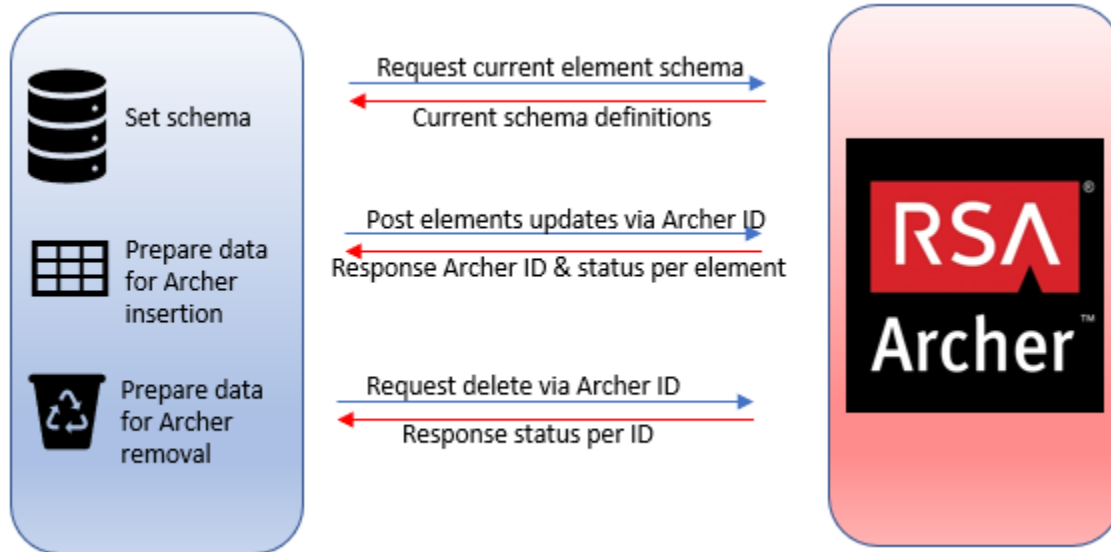
Dan Abrahamson, RSA Partner Engineering
Last Modified: January 22, 2019

Solution Summary

1touch.io DLM Pro has brought about a paradigm shift in the way that enterprises are able to address the problem of the unknown, with respect to Data Lifecycle Management. Enterprises will simply deploy 1touch.io DLM Pro to watch network traffic – data in motion – to produce a list of network elements that store, process and share personal data. There is no need to tell 1touch.io DLM Pro where to look for such data repositories, as it automatically creates an inventory of all network elements, which naturally includes the data repositories.

Once the location of data has been discovered, 1touch.io DLM Pro will analyze the stored data – data at rest – to find where the personal data is stored, allowing the enterprise to understand where personal data is found, and how it is being used.

Partner Integration Overview	
RSA Archer Solution	Third Party Management
RSA Archer Use Case	Third Party Governance, Third Party Catalog, Third Party Risk Management
RSA Archer Applications	Devices, Third Party Profile, Third Party Document, Contacts
Uses Custom Application	No
Requires On-Demand License	No



Partner Product Configuration

Before You Begin

This section provides instructions for configuring the 1touch.io DLM Pro with the RSA Archer GRC Platform. This document is not intended to suggest optimum installations or configurations.

It is assumed that the reader has both working knowledge of all products involved, and the ability to perform the tasks outlined in this section. Administrators should have access to the product documentation for all products in order to install the required components.

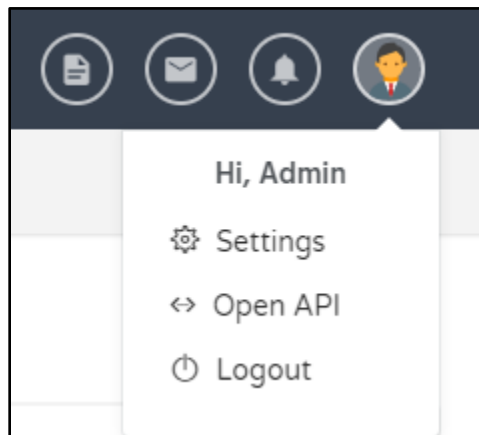
All DLM Pro components must be installed and working prior to the integration. Perform the necessary tests to confirm that this is true before proceeding.

! > Important: The integration described in this guide is being provided as a reference implementation for evaluation and testing purposes. It may or may not meet the needs and use cases for your organization. If additional customizations or enhancements are needed, it is recommended that customers contact RSA Professional Services for assistance.

1touch.io DLM Pro Configuration

The effort required to integrate with RSA Archer is small.

1. Navigate to the Open API, by selecting it from the drop-down menu under the avatar.



- a. Select RSA -> Archer under the 1touch Open API menu

1Touch Open API

1touch.io ▶ DSAR

RSA ▶ Archer

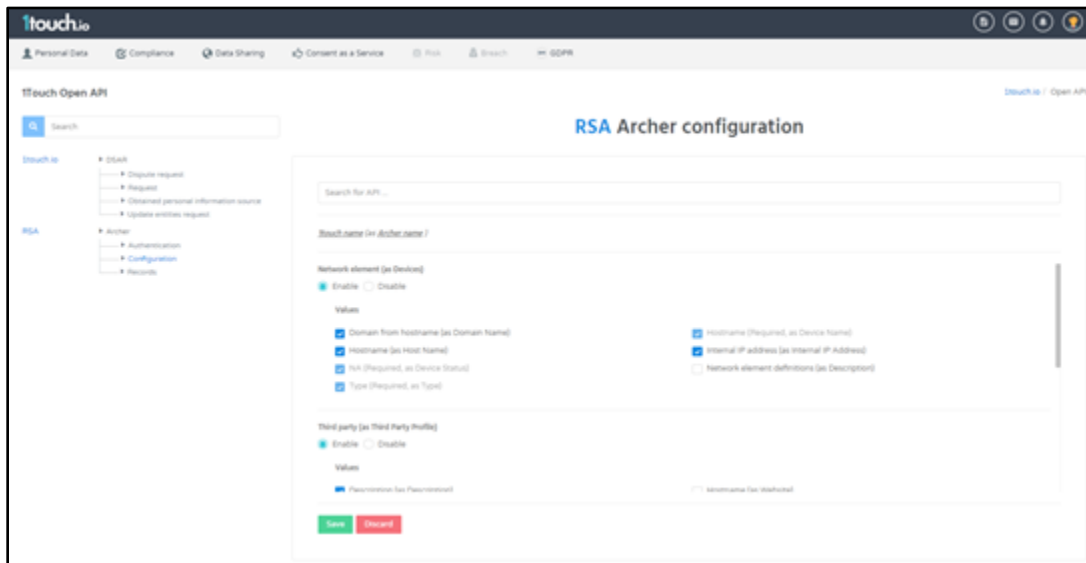
- 2. The first task is to configure the authentication credentials, the instance name and the Archer URL which come from your Archer administrator.

The screenshot shows the 1touch.io interface for configuring RSA Archer authentication. The page title is "RSA Archer authentication". The left sidebar shows a navigation menu with "1touch.io" and "RSA" expanded to "Archer", which includes "Authentication", "Configuration", and "Records". The main content area contains a form with the following fields:

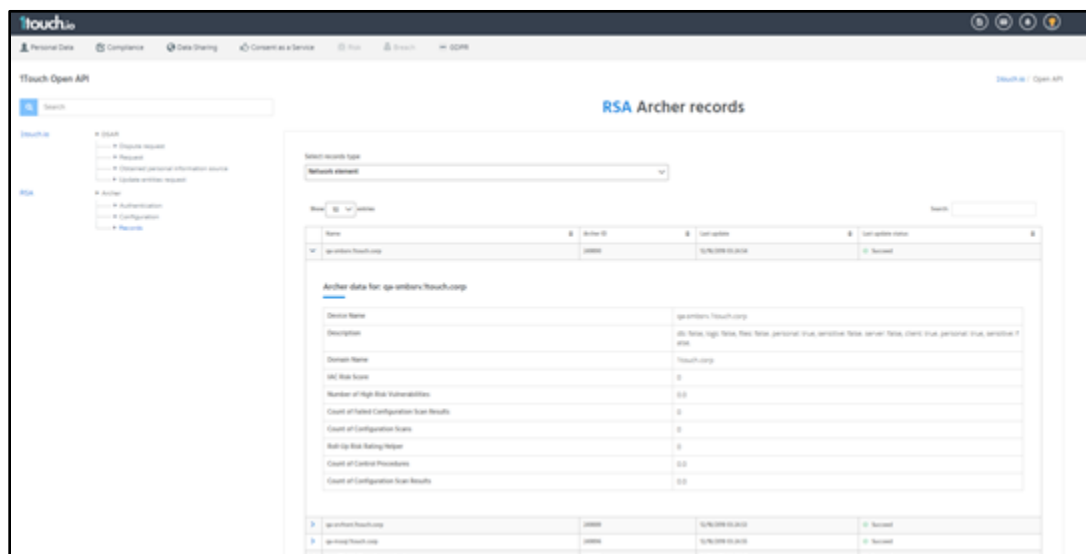
- Username: sysadmin
- Password: [masked]
- Instance Name: onetouch
- User Domain: [empty]
- Archer URL: http://10.128.0.8/rsaarcher/

At the bottom of the form, there are three buttons: "Save" (blue), "Test connection" (grey), and "Delete authentication" (red).

- Under configuration, select the relevant data elements that will be shared with RSA Archer.



- You can check which data was shared with Archer by selecting the records link.



5. For each of the applications the primary keys are as follows:

Application Name (Archer)	Unique Key (1touch.io)
Devices	Hostname
Third Party Profile	Third Party Name
Contacts	First Name+Last Name+Email
Third Party Document Repository	Filename

RSA Archer GRC Configuration

RSA Archer GRC Configuration

There are no special requirements to configure RSA Archer GRC.

Certification Environment for RSA Archer GRC

Date Tested: January 22, 2019

Certification Environment		
Product Name	Version Information	Operating System
RSA Archer GRC	6.4	Virtual Appliance
1touch.io DLM Pro	1.0	Physical Appliance

Known Issues

When DLM Pro adds device information to RSA Archer the device name used is the FQDN of the device, with fallback to the IP address if name resolution is unavailable.

When DLM Pro adds device information, currently the device identifiers are added as a comment in the description, in free format text.

DLM Pro will only update Devices, Storage Devices, Third Party Profiles or Contracts that have been populated by DLM Pro. If an item already exists, DLM Pro will create a new item, as long as the name is unique.

DLM Pro uses standard application fields for RSA Integration. Please contact us on rsa-1touch@1touch.io if you would like a more tailored integration.