

# RSA® ARCHER® SUITE Integration Guide

Tableau Web Data Connector - RSA Archer Integration 6.4



Scott Hagemeyer, RSA Product Management

Last Modified: December 10, 2019

## Contact information

Go to the RSA corporate website for regional Customer Support telephone and fax numbers:<https://community.rsa.com/community/rsa-customer-support>.

## Trademarks

RSA, the RSA Logo, RSA Archer, RSA Archer Logo, and Dell are either registered trademarks or trademarks of Dell Corporation ("Dell") in the United States and/or other countries. All other trademarks used herein are the property of their respective owners. For a list of RSA trademarks, go to [www.emc.com/legal/emc-corporation-trademarks.htm](http://www.emc.com/legal/emc-corporation-trademarks.htm).

## License agreement

This software and the associated documentation are proprietary and confidential to Dell, are furnished under license, and may be used and copied only in accordance with the terms of such license and with the inclusion of the copyright notice below. This software and the documentation, and any copies thereof, may not be provided or otherwise made available to any other person.

No title to or ownership of the software or documentation or any intellectual property rights thereto is hereby transferred. Any unauthorized use or reproduction of this software and the documentation may be subject to civil and/or criminal liability.

This software is subject to change without notice and should not be construed as a commitment by Dell.

## Third-party licenses

This product may include software developed by parties other than RSA. The text of the license agreements applicable to third-party software in this product may be viewed on RSA.com. By using this product, a user of this product agrees to be fully bound by terms of the license agreements.

## Note on encryption technologies

This product may contain encryption technology. Many countries prohibit or restrict the use, import, or export of encryption technologies, and current use, import, and export regulations should be followed when using, importing or exporting this product.

For secure sites, Dell recommends that the software be installed onto encrypted storage for secure operations.

For customers in high security zones, Dell recommends that a full application sanitization and reinstallation from backup occur when sensitive or classified information is spilled.

## Note on Section 508 Compliance

The RSA Archer® Suite is built on web technologies which can be used with assistive technologies, such as screen readers, magnifiers, and contrast tools. While these tools are not yet fully supported, RSA is committed to improving the experience of users of these technologies as part of our ongoing product road map for RSA Archer.

The RSA Archer Mobile App can be used with assistive technologies built into iOS. While there remain some gaps in support, RSA is committed to improving the experience of users of these technologies as part of our ongoing product road map for the RSA Archer Mobile App.

## Distribution

Use, copying, and distribution of any Dell software described in this publication requires an applicable software license.

Dell believes the information in this publication is accurate as of its publication date. The information is subject to change without notice. Use of the software described herein does not ensure compliance with any laws, rules, or regulations, including privacy laws that apply to RSA's customer's businesses. Use of this software should not be a substitute for consultation with professional advisors, including legal advisors. No contractual obligations are formed by publication of these documents.

THE INFORMATION IN THIS PUBLICATION IS PROVIDED "AS IS." DELL INC. MAKES NO REPRESENTATIONS OR WARRANTIES OF ANY KIND WITH RESPECT TO THE INFORMATION IN THIS PUBLICATION, AND SPECIFICALLY DISCLAIMS IMPLIED WARRANTIES OF MERCHANTABILITY OR FITNESS FOR A PARTICULAR PURPOSE.

Copyright 2010-2019 Dell, Inc. or its subsidiaries. All Rights Reserved.  
December 2019

**Table of Contents**

- Revision Notes.....4
- Chapter 1: Overview of Tableau Web Data Connector ..... 4
  - About Tableau Web Data Connector ..... 4
  - Requirements..... 4
- Chapter 2: Configure Tableau Web Data Connector ..... 5
  - Importing Tableau Web Data Connector to RSA Archer..... 5
- Chapter 3: Working with the Tableau Web Data Connector ..... 8
  - Connector Operation ..... 8
  - Troubleshooting..... 11
    - Logging Level..... 11
    - Logging Location ..... 12
    - Tableau Debugger ..... 13
- Appendix A: Certification Environment ..... 13

## Revision Notes

Document Version	Published Date	Notes
1.1	December, 2019	RSA Archer only supports Tableau Desktop Integration.

# Chapter 1: Overview of Tableau Web Data Connector

## About Tableau Web Data Connector

Tableau is a world leading reporting software that helps people see and understand data. It makes analyzing data fast and easy, beautiful and useful. It’s software for anyone and everyone.

The integration between Tableau and RSA Archer allows for the creation and analysis of RSA Archer’s data in the Tableau software in real time, with no additional steps to ETL the data to another system or format.

The integration requires one component, the Web Data Connector, be imported to the existing RSA Archer installation(s) that will be reported on.

## Requirements

Components	Requirement
<b>RSA Archer Solution</b>	All
<b>RSA Archer Use Case</b>	All
<b>Requires On-Demand License</b>	No

## Chapter 2: Configure Tableau Web Data Connector

This section provides instructions for configuring the [Tableau Web Data Connector](#) with the RSA Archer Platform version 6.4 ONLY. This document is not intended to suggest optimum installations or configurations, nor should it be used on any version of RSA Archer other than the one specified.

It is assumed that the reader has both working knowledge of all products involved, and the ability to perform the tasks outlined in this section. Administrators should have access to the product documentation for all products in order to install the required components.

All Tableau components must be installed and working prior to the integration. Perform the necessary tests to confirm that this is true before proceeding.

**Important:** The integration described in this guide is being provided as a reference implementation for evaluation and testing purposes. It may or may not meet the needs and use cases for your organization. If additional customizations or enhancements are needed, it is recommended that customers contact RSA Professional Services for assistance.

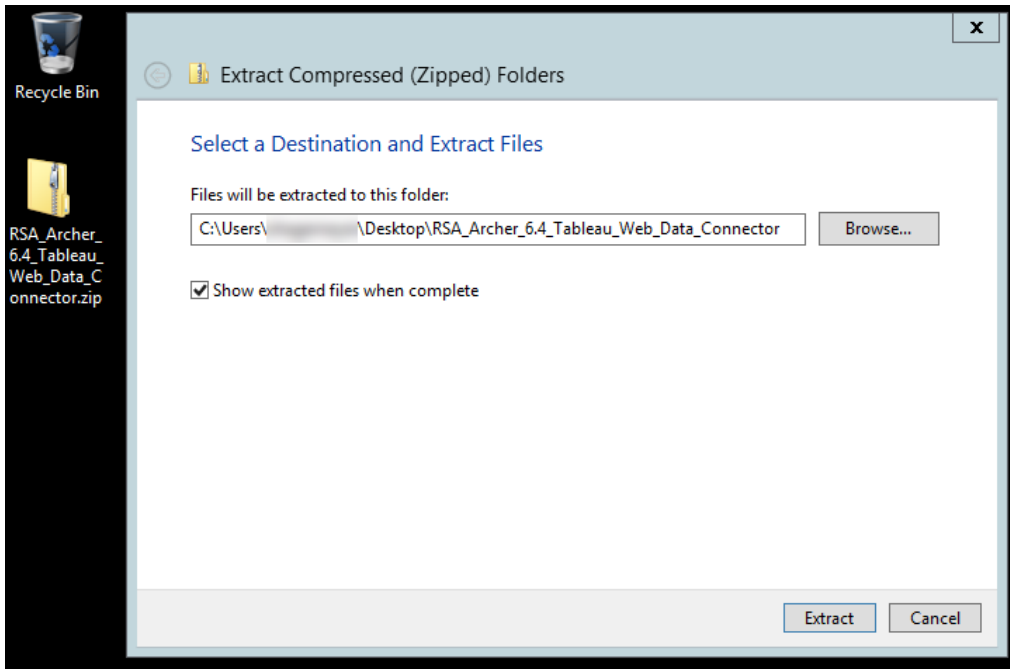
### Importing Tableau Web Data Connector to RSA Archer

**WARNING:** The steps in this guide pertain ONLY to RSA Archer version 6.4! If you are running a version of RSA Archer later than this, please DO NOT USE this guide. The Connector is installed automatically by RSA Archer installer in versions 6.4.0.1 (6.4 Patch 1) and later.

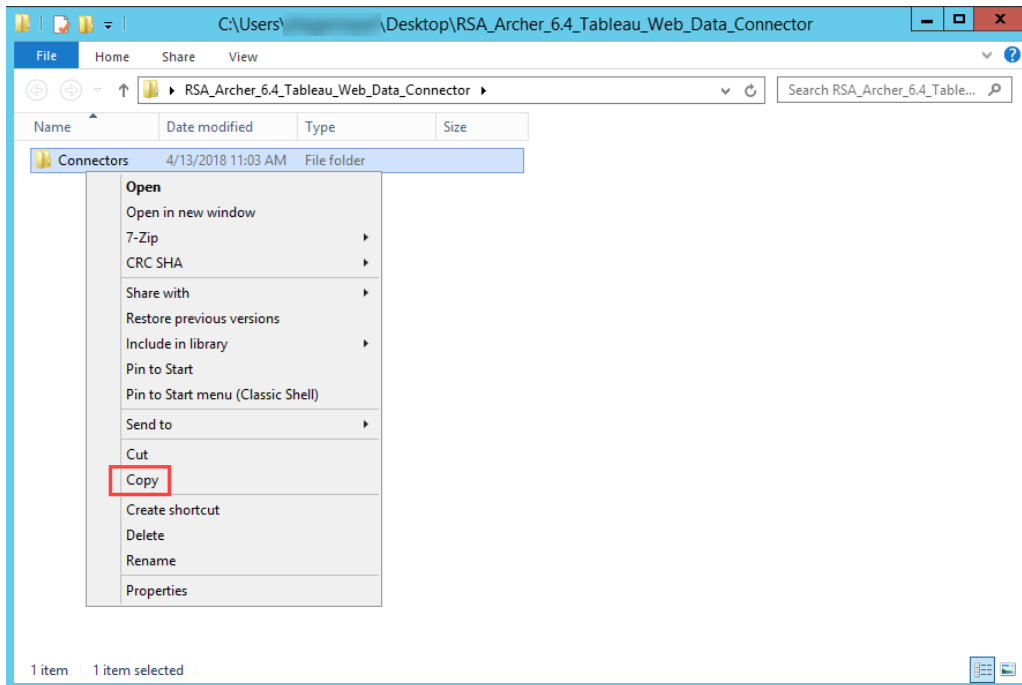
The first step in enabling the Tableau integration is to obtain the RSA Archer Web Data Connector from the RSA Ready website. Once you have downloaded this ZIP file, follow the steps below on all webservers for the RSA Archer installation(s) you wish to report on.

1. Establish a remote desktop connection to the desired RSA Archer web server.

- Copy the Web Data Connector ZIP file to the server’s desktop, and extract it to the desktop.

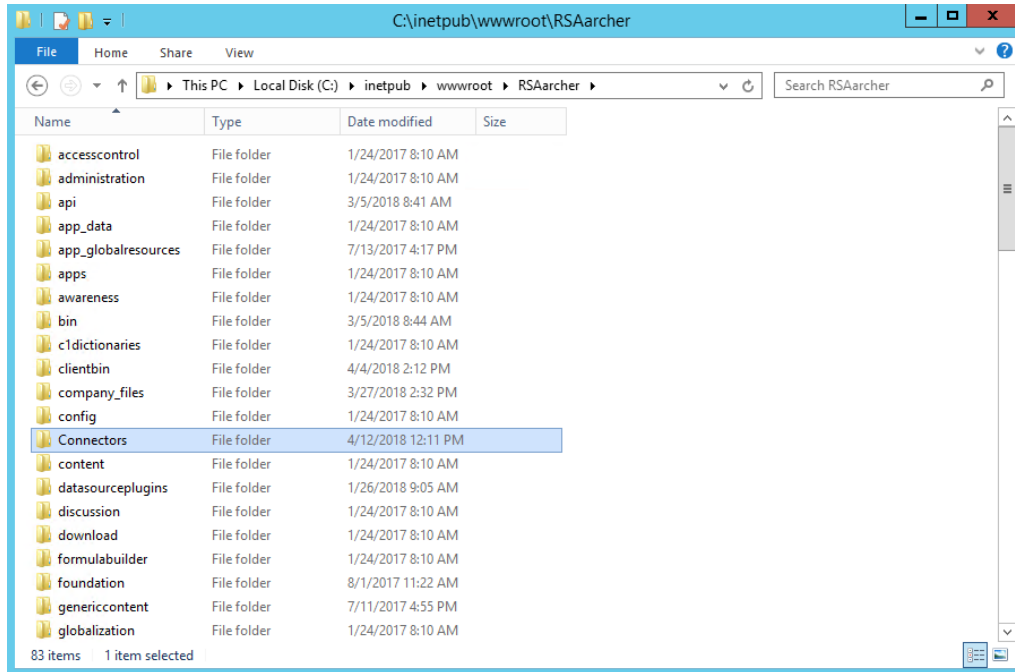


- When the extraction is complete and the folder opens, COPY the “Connectors” folder.

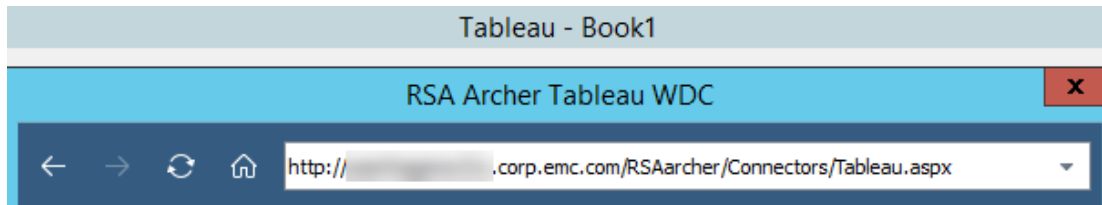


## Implementation Guide – Tableau Web Data Connector – RSA Archer Integration 6.4

4. With the “Connectors” folder copied, navigate to the RSA Archer website directory. By default, this is at C:\inetpub\wwwroot\RSAArcher. PASTE the “Connectors” folder in this directory.



5. Repeat Steps 1 – 4 for the remaining web servers in the RSA Archer installation(s).
6. Your RSA Archer Tableau Web Data Connector is now ready for use at the following URL from Tableau: {Your RSA Archer Base URL}/Connectors/Tableau.aspx

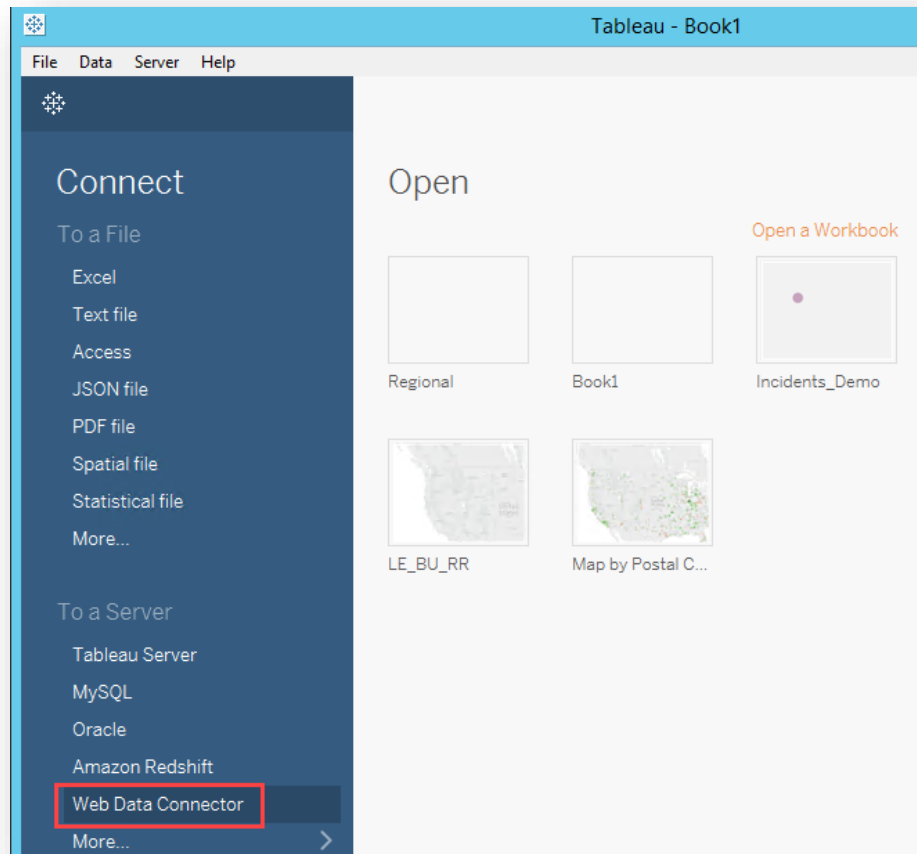


## Chapter 3: Working with the Tableau Web Data Connector

### Connector Operation

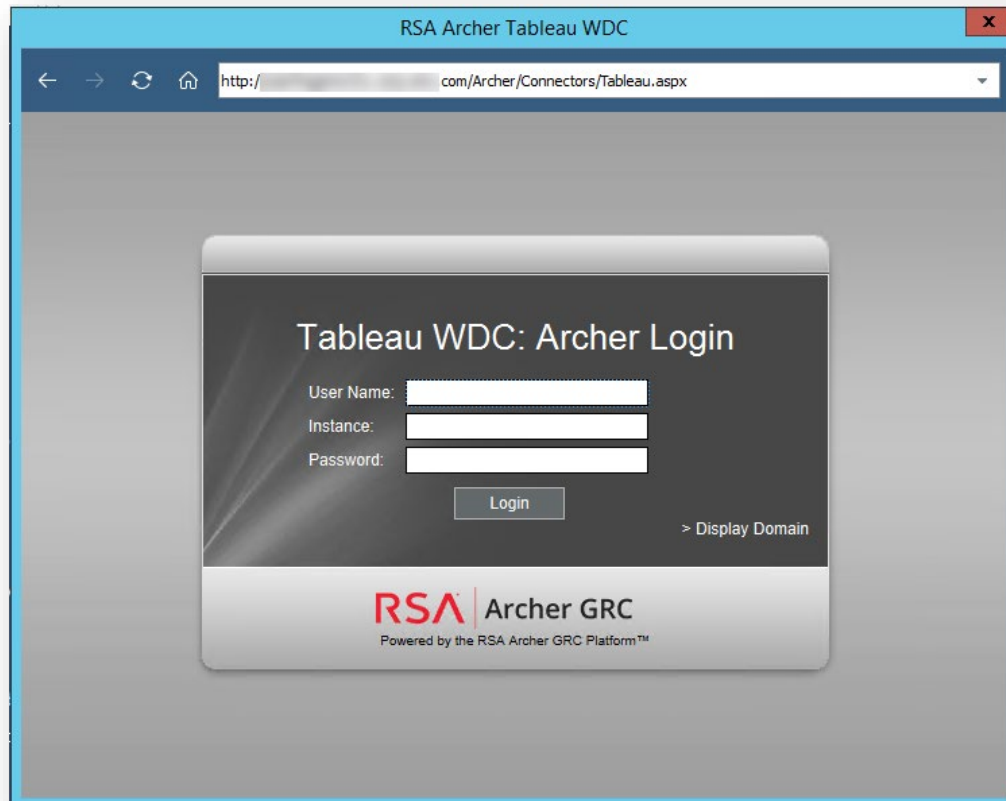
To connect Tableau to the RSA Archer Web Data Connector (WDC), follow the steps below:

1. Launch Tableau, and choose “Web Data Connector” as your source from the left menu.



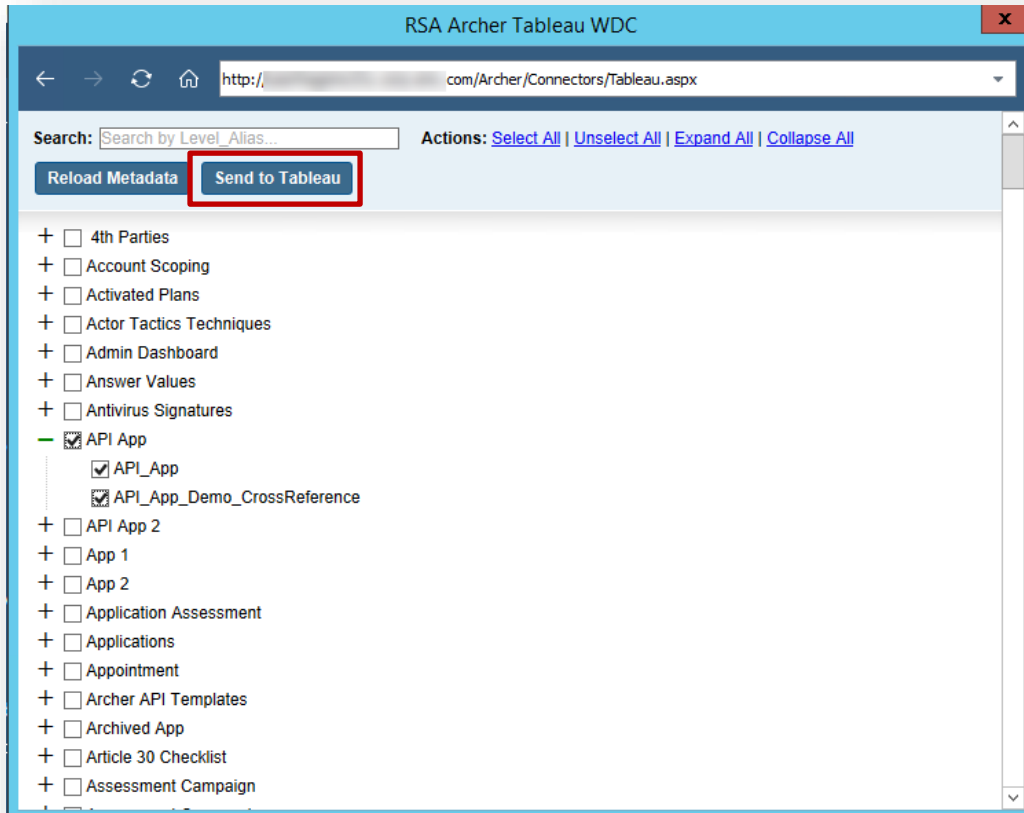


2. The URL for the WDC is your Archer base URL, plus “/Connectors/Tableau.aspx”



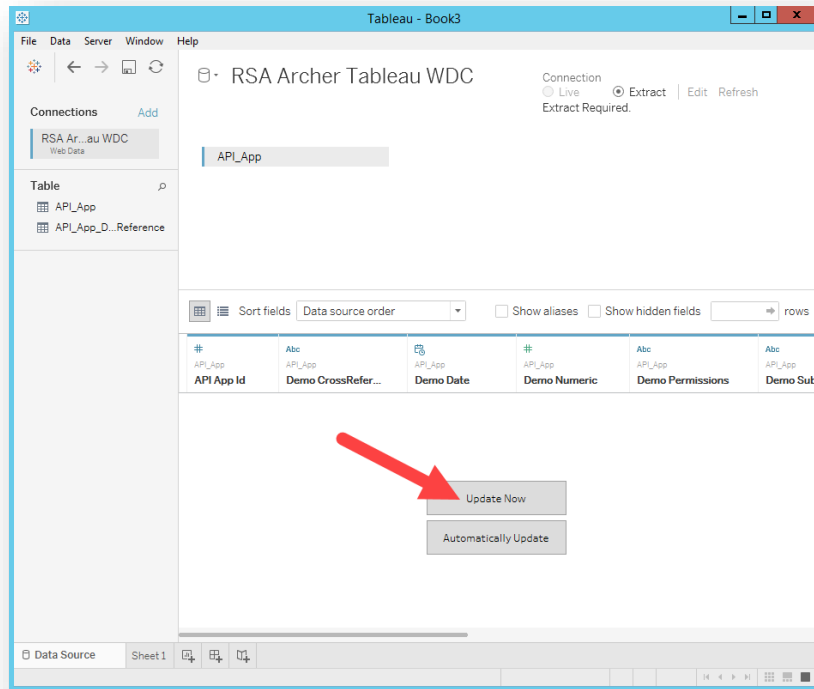
3. On the login screen, provide valid credentials for the RSA Archer instance, and click “Login”.
4. The connector will then attempt to establish a session with the RSA Archer instance, and then pull the environment metadata the logged in user has access to.

5. Once the metadata loads, choose one or more child items to report on, then click “Send to Tableau”.



- a. The “Search” box enables you to quickly find what you are looking for. It is not case-sensitive nor does it require you to type the underscores in the aliases.
- b. A green + / - icon means that all children of that parent are selected.
- c. A red + / - icon means that at least one, but not all, children of that parent are selected.
- d. A black + / - icon means that none of the children of that parent are selected.

6. Build out your report structure in Tableau, then click on “Update Now” to test the data pull.



7. RSA Archer reaches out to the Content API via the WDC to pull the data.

## Troubleshooting

On occasion, the WDC may experience errors either with establishing a valid RSA Archer session, retrieving the metadata, or pulling content data. When this happens, the messages are reflected on screen and also logged to the system.

## Logging Level

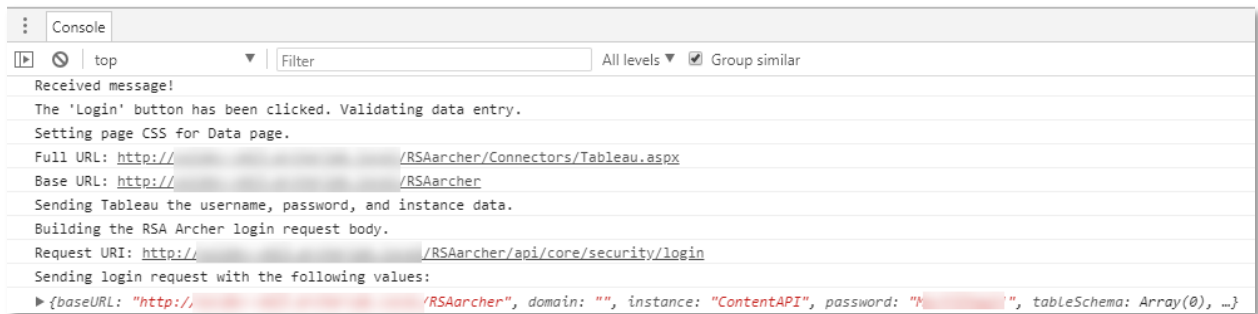
The JavaScript file “tableau-archer-1.0.js” contains a logging level that is configurable. By default, it’s set to “Warning” level.

```
1 //LOGGING LEVEL
2 //--Levels are cumulative, i.e. Info contains Warnings & Errors
3 var level = {
4   None: 0, //Off
5   Error: 1, //Errors
6   Warn: 2, //Warnings
7   Info: 3 //Verbose
8 };
9
10 //*****
11 // SET LOGGING LEVEL HERE //
12 // //
13 var logLevel = level.Warn; //
14 // //
15 //*****
16
```

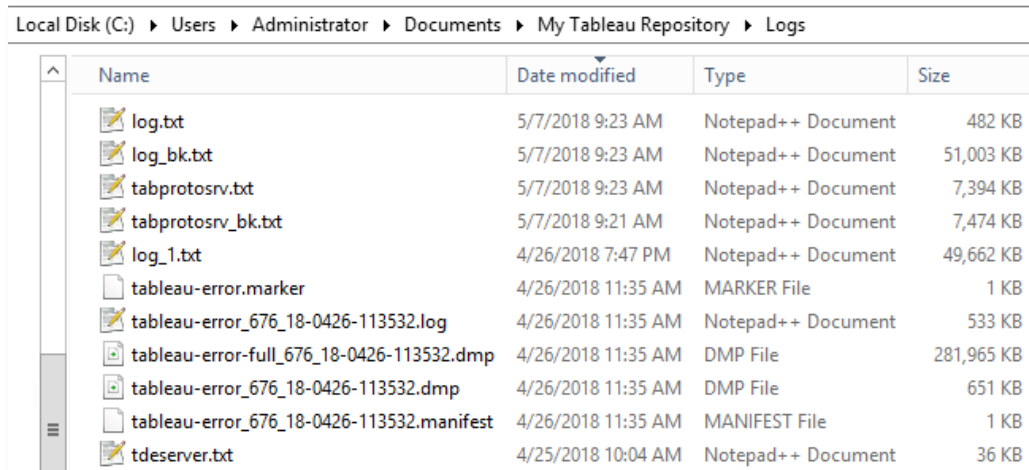
## Logging Location

The WDC logs messages to the browser console or the Tableau logging service depending on how it's been accessed.

If using a browser to test the WDC, logs are written to the browser's developer tools console.



If using Tableau, logs are written to the Tableau logging directory which by default is at:  
 C:\Users\{Username}\Documents\My Tableau Repository\Logs



## Tableau Debugger

Tableau also contains a built-in WDC debugger that is invoked by starting Tableau from command line with a special command. This will cause the debugger to launch when the WDC first connects, not when Tableau launches. Launch Tableau with the command: `tableau.exe -DDebugWDC`

## Appendix A: Certification Environment

Date Tested: April 12, 2018

Product Name	Version Information	Operating System
RSA Archer	6.4	Windows Server 2012 R2
Tableau Desktop	10.3.8	Windows 10 Enterprise

## Revision Notes

Document Version	Published Date	Notes
1.1	December, 2019	RSA Archer only supports Tableau Desktop Integration.