



RSA Authentication Client 3.6

Welcome

RSA Authentication Client 3.6 supports the RSA SecurID 800 Authenticator (SecurID 800). With Authentication Client, SecurID 800 users can perform various authentication and cryptographic functions using digital certificates. If they use additional RSA products (such as RSA SecurID Software Token for Microsoft Windows), they can use one-time passcodes (PINs and tokencodes) with automatic tokencode access. For example, users can log on with their smart cards and authenticate to protected web resources, applications, or Virtual Private Networks (VPNs) using online or wireless access. They can also digitally sign e-mail messages or encrypt files.

RSA Authentication Client includes RSA Smart Card Middleware. The Middleware provides a Microsoft Minidriver based on the [**Microsoft Smart Card Minidriver specification**](#) and an implementation of the Public Key Cryptographic Standard #11 (PKCS #11) Application Programming Interface (API). Developers can use the supported functions and mechanisms to write applications that exchange information with smart cards.

Users can install Authentication Client to have access to the RSA Control Center. The Control Center functions as the user interface. It includes options that allow users to manage their smart cards. If users do not need the Control Center, they can just install the Middleware portion of the product by installing RSA Smart Card Middleware instead of RSA Authentication Client. You can find both products on the RSA Authentication Client 3.6 CD.

RSA Authentication Client also includes the following:

RSA PIN Unblock Wizard. Allows administrators to assist users who block their smart card by exceeding the invalid PIN-entry limit. This tool works with RSA Control Center or the Microsoft Windows PIN Unblock options. By working with the user, an administrator can use a challenge-response method to unblock the card. To install it, run the MSI file.

RSA Card Conversion Utility. Allows a user to convert the data format of a smart card to take advantage of performance enhancements provided in this version of the Middleware. For example, users who used their cards with RSA Smart Card Middleware 2.0.1 or earlier, RSA Authentication Client 2.0.1 or earlier, or RSA Sign-On Manager 4.7 or earlier must upgrade their smart card data formats to notice the performance improvements. This tool automatically installs when you install Middleware. Administrators can also control the card conversion settings through Group Policy Object templates. For example, you can change the default setting to deny the upgrade of the card data format if you think users may need to continue to use the unsupported RSA products. For more information, see the *RSA Authentication Client 3.6 Group Policy Object Template Guide*.

RSA Key Container Utility (KeyContainerUtility.exe). Allows administrators to create containers for certificates to make them Microsoft compatible. For example, if a user acquired a certificate using PKCS #11, but the user did not request it from a Microsoft CA, the certificate shows up on the smart card as “not Microsoft compatible.” To make a certificate compatible, you can run this utility from the command line and create (or delete) a key container for the certificate.

Basic Requirements

Use RSA Authentication Client or RSA Smart Card Middleware with the RSA SecurID 800 Authenticator. This authenticator functions as a USB smart card and SecurID token. You can install Authentication Client or Smart Card Middleware on the following operating systems:

- Windows XP, 32-bit Professional SP3 edition
- Windows XP, 64-bit, Professional SP2 edition
- Windows Vista SP2, 32-bit and 64-bit, Business and Enterprise editions
- Windows 7 SP1, 32-bit and 64-bit, Enterprise and Professional editions
- Windows 8, 32-bit and 64-bit, Enterprise and Professional editions
- Windows Server 2003 R2, 32-bit and 64-bit, Standard, and Enterprise editions
- Windows Server 2008 SP2, 32-bit and 64-bit, Standard, Enterprise, Data Center, and Web Server editions
- Microsoft Windows Server 2008 R2 SP1, 64-bit, Standard, Enterprise, Data Center, and Web Server editions
- Windows Server 2012 SP2, Standard or Data Center editions

Important: If you use a Windows XP or Windows Server 2003 operating system, you must install the Windows Base Smart Card Cryptographic Service Provider (Base CSP) Package: x86 (KB909520) for Middleware to function properly. To obtain the Base CSP package, go to the Microsoft download site and install Windows Update [KB909520](#).

You cannot upgrade from earlier versions of RSA Authentication Client, RSA Authenticator Utility, or RSA Smart Card Middleware to RSA Authentication Client 3.6 (or RSA Smart Card Middleware 3.6). You can manually remove the earlier product or have Authentication Client detect it and remove it automatically during the installation process.

You also cannot use these RSA products with Authentication Client or Middleware:

- RSA Authentication Client 2.0.1 (or earlier)
- RSA Authenticator Utility 1.1 (or earlier)

- RSA Smart Card Middleware 3.0.1 (or earlier)
- RSA Sign-On Manager 4.7 (or earlier)
- RSA Authentication Agent 6.0, 6.1, 6.1.2, or 6.4 for Microsoft Windows

For full details on the requirements, see the *RSA Authentication Client 3.6 Installation and Administration Guide*.

RSA Authentication Client Installation

The RSA Authentication Client 3.6 CD includes the **setup.exe** file and the following folders:

- **APIs.** Contains the PKCS #11 API files.
- **Documentation.** Contains PDF documentation files that provide information on how to use the product and tools and that describe how to write programs that interact with smart cards. This folder also includes documentation for RSA SecurID Software Token 4.1 in case you install it. You only need to install this product if you plan to use SecurID authentication with automatic tokencode access.
- **Key Container Utility.** Contains the Key Container Utility executable (KeyContainerUtility.exe). Run this executable from the command line to create a container for certificates that are not Microsoft compatible. The container makes the certificates compatible. You can also run this executable to list certificates on the smart card or delete containers. Use the executable for your operating system (for example, the one in the Win32 folder or the x64 folder).
- **Licenses.** Contains the license agreements.
- **Policy Templates.** Contains the RSA Authentication Client Group Policy Object (GPO) templates. You can use the templates to change the default logon settings or Control Center options for Authentication Client. Or, use them to define the smart card PIN requirements or card conversion process for Authentication Client or Middleware users.
- **Readme.** Contains the latest Readme document. This document lists the latest features and any known or fixed issues.
- **x64.** Contains the RSA Authentication Client, RSA Smart Card Middleware, and RSA PIN Unblock Wizard MSI installation files for 64-bit version operating systems.

- **x86.** Contains the RSA Authentication Client, RSA Smart Card Middleware, and RSA PIN Unblock Wizard MSI installation files for 32-bit version operating systems. It also contains MSI files for installing RSA SecurID Software Token 4.1 for Microsoft Windows. (You need to install this product separately if you want to use SecurID authentication with automatic tokencode access and you do not install it by inserting the Authentication Client CD or double-clicking the **setup.exe** file.)

This kit is also available in a .zip file that you can download from RSA SecurCare Online (<https://knowledge.rsasecurity.com>).

This *Getting Started* document provides information on installing the Authentication Client (or Smart Card Middleware) product by inserting the CD or double-clicking the **setup.exe** file. For information on installing the product from the MSI file, see the *RSA Authentication Client 3.6 Installation and Administration Guide*.

If you install Authentication Client from the CD (or **setup.exe** file), you see an option to install RSA SecurID Software Token 4.1.

RSA SecurID Software Token 4.1 for Microsoft Windows allows you to log on to applications or Virtual Private Networks (VPNs) using SecurID authentication (PIN and tokencode) with automatic tokencode access. For example, if you see a prompt to enter a passcode, you only enter your SecurID PIN. Then Software Token can access the tokencode from the connected authenticator and insert it next to the PIN for you. (For more information, see the *RSA SecurID Software Token 4.1 Release Notes*.)

To install the RSA Authentication Client 3.6 or RSA Smart Card Middleware 3.6:

1. Insert the product CD to start the Install Wizard or double-click **setup.exe**.

Note: If you insert the CD and the Install Wizard does not start, your policy settings may not allow autorun capabilities. To start the Install Wizard, double-click **setup.exe**.

2. Do one of the following:
 - To install RSA Authentication Client without RSA SecurID Software Token 4.1, click **Install**.

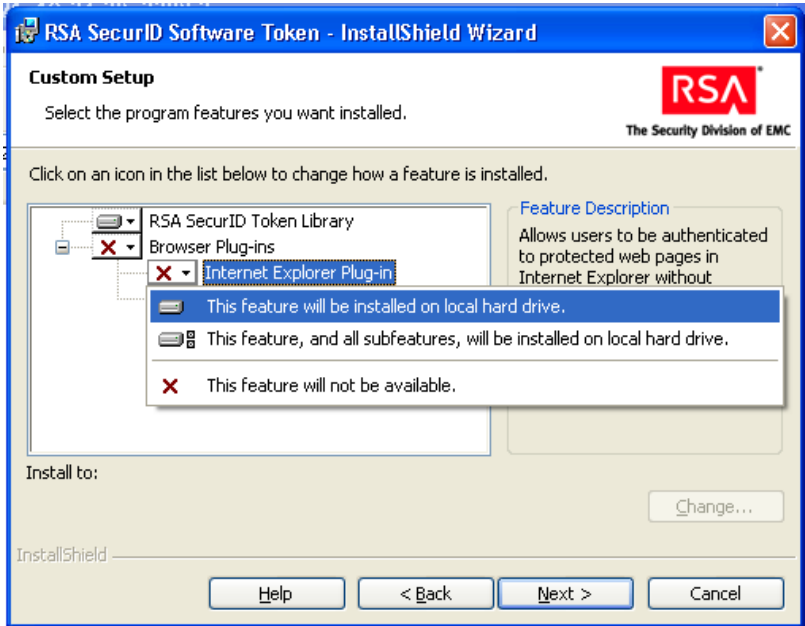
- To install RSA Authentication Client with RSA SecurID Software Token, select **RSA SecurID Software Token 4.1** and click **Install**. (If you already have an earlier version of RSA SecurID Software Token installed, for example, RSA SecurID Token 4.0 for Windows Desktops, selecting this option allows you to automatically upgrade.)
3. Click **Next** at the product title dialog box. The RSA Smart Card Middleware Welcome dialog box opens. Click **Next**.
 4. Leave the default region where you purchased the software or select a different region and click **Next**. Then select **I accept the terms in the license agreement**. Click **Next**.
 5. Do one of the following:
 - For installing Authentication Client on Windows XP or Windows Server 2003, select **Complete** to install all the components, including the RSA GINA (logon dialog boxes), or click **Custom** to select an option to manually install or remove the RSA GINA. Click **Next**.
 - For installing Authentication Client on Windows Vista or Windows Server 2008 or to install Smart Card Middleware, skip to step 7.
 6. Do one of the following:
 - If you selected **Complete**, skip to step 7.
 - If you selected **Custom**, the Custom Setup dialog box displays the RSA GINA feature you can add or remove. Expand **RSA GINA** and select **This feature will be installed on local hard drive**. Click **Next**.
 7. Click **Install**. When complete, click **Finish**.

Important: If you did not choose to install RSA SecurID Software Token 4.1, you completed the installation. If you chose to install it, the Welcome dialog box for RSA SecurID Software Token opens. Click **Next** and follow the remaining steps.

8. Follow the prompts to select the region where you purchased the software and accept the license agreement. (Click **Print** to print the agreement.) Click **Next**.

9. Do one of the following:

- If you do not want to access web applications using the web browser plug-in for Internet Explorer, click **Typical**.
- If you want to access web applications using the web browser plug-in for Internet Explorer, click **Custom**. Expand **Browser Plug-ins** and click **Internet Explorer Plug-in** or **Firefox Plug-in** (depending on your browser) and select **This feature will be installed on local hard drive** as shown.



Note: For a Custom installation, you can leave the default installation directory or click **Change** to browse to a new directory.

10. Click **Next**, then click **Install**. When complete, click **Finish**.

Product Documentation

RSA provides complete documentation for product installation, operation, and administration. The documentation for this product includes PDF files. You can find this information in the **Documentation** folder. You can also find the Release Notes for RSA SecurID Software Token 4.1.

Next Steps

Before you use RSA Authentication Client 3.6 or RSA Smart Card Middleware 3.6, read the *RSA Authentication Client 3.6 Installation and Administration Guide*. The guide lists details on the system requirements and describes how to deploy the software to multiple users. Also read the *Release Notes*, which describes new features and workarounds for known issues. If you also installed RSA SecurID Software Token 4.1, read the *RSA SecurID Software Token 4.1 Administrator's Guide* and the *Release Notes* before you use the product.

Getting Support and Service

RSA SecurCare Online	https://knowledge.rsasecurity.com
Customer Support Information	www.emc.com/support/rsa/index.htm
RSA Solution Gallery	https://gallery.emc.com/community/marketplace/rsa?view=overview

RSA SecurCare Online offers a Knowledgebase that contains answers to common questions and solutions to known problems. It also offers information on new releases, important technical news, and software downloads.

The RSA Solution Gallery provides information about third-party hardware and software products that have been certified to work with RSA Security products. The directory includes Implementation Guides with step-by-step instructions and other information about interoperation of RSA Security products with these third-party products.

Trademarks

RSA, the RSA logo and EMC are either registered trademarks or trademarks of EMC Corporation (“EMC”) in the United States and/or other countries. All other trademarks used herein are the property of their respective owners.

© 2009-2012 EMC Corporation. All rights reserved.
October 2012

