

RSA Identity Management and Governance Appliance Updater Guide



Contact Information

Go to the RSA corporate website for regional Customer Support telephone and fax numbers:

www.emc.com/domains/rsa/index.htm.

For technical support, contact RSA at support@rsa.com.

Trademarks

RSA, the RSA Logo, and EMC are either registered trademarks or trademarks of EMC Corporation in the United States and/or other countries. All other trademarks used herein are the property of their respective owners. For a list of EMC trademarks, go to www.emc.com/legal/emc-corporation-trademarks.htm#rsa.

License agreement

This software and the associated documentation are proprietary and confidential to EMC, are furnished under license, and may be used and copied only in accordance with the terms of such license and with the inclusion of the copyright notice below. This software and the documentation, and any copies thereof, may not be provided or otherwise made available to any other person.

No title to or ownership of the software or documentation or any intellectual property rights thereto is hereby transferred. Any unauthorized use or reproduction of this software and the documentation may be subject to civil and/or criminal liability.

This software is subject to change without notice and should not be construed as a commitment by EMC.

Third-party licenses

This product may include software developed by parties other than RSA. The text of the license agreements applicable to third-party software in this product may be viewed by launching the RSA IMG product and selecting the About menu.

Note on encryption technologies

This product may contain encryption technology. Many countries prohibit or restrict the use, import, or export of encryption technologies, and current use, import, and export regulations should be followed when using, importing or exporting this product.

Distribution

Use, copying, and distribution of any EMC software described in this publication requires an applicable software license. EMC believes the information in this publication is accurate as of its publication date. The information is subject to change without notice.

THE INFORMATION IN THIS PUBLICATION IS PROVIDED "AS IS." EMC CORPORATION MAKES NO REPRESENTATIONS OR WARRANTIES OF ANY KIND WITH RESPECT TO THE INFORMATION IN THIS PUBLICATION, AND SPECIFICALLY DISCLAIMS IMPLIED WARRANTIES OF MERCHANTABILITY OR FITNESS FOR A PARTICULAR PURPOSE.

Copyright © 2015 EMC Corporation. All Rights Reserved. Published in the USA

Contents

Preface	4
Text Conventions	4
Related Documents	4
RSA IMG Appliance Updates	6
Update Process Overview	6
Update the Appliance	7
Install the Appliance Updater	8
Update the Appliance Operating System and Database	9
Updater Options	9

Preface

Text Conventions

This guide uses the following text conventions:

Element	Convention Used	Example
s (The user supplies a value for the variable.)	<i>Courier and Italic</i> in angle brackets (<>)	Enter the following: Display= < <i>workstation name</i> > :0.0 export display
On-screen text	Courier	The following line displays: path="/audit"
User-typed text	Courier	Enter the following path name: /etc/init.d/
Cross-references	<u>Underlined and hypertext-blue</u>	See Related Documents .
References to documents (title and number)	<i>Italic</i>	<i>Installation Guide</i>

Related Documents

- Installation and Upgrade Guide
- Database Setup and Management Guide
- Installation and Upgrade on WebSphere Guide
- Installation and Upgrade on WebLogic Guide
- Administrators Guide
- User Tasks Guide
- Collectors Guide
- Business Role Manager Guide
- Access Request Manager Guide
- Access Fulfillment Express Guide
- Access Fulfillment Express Connector Configuration Guide

- [Public Database Schema Reference](#)
- [Novell Identity Manager Integration Guide](#)
- [Sun Identity Manager Integration Guide](#)
- [IBM Tivoli Identity Manager Integration Guide](#)
- [Onboarding Cloud Applications Guide](#)

RSA IMG Appliance Updates

RSA IMG software can be installed on an RSA IMG appliance or on a compatible server (soft-appliance). Depending on your installation scenario, RSA IMG may have supplied your operating system and the Oracle database that RSA IMG software uses. You can use the Appliance Updater to install patches for these components.

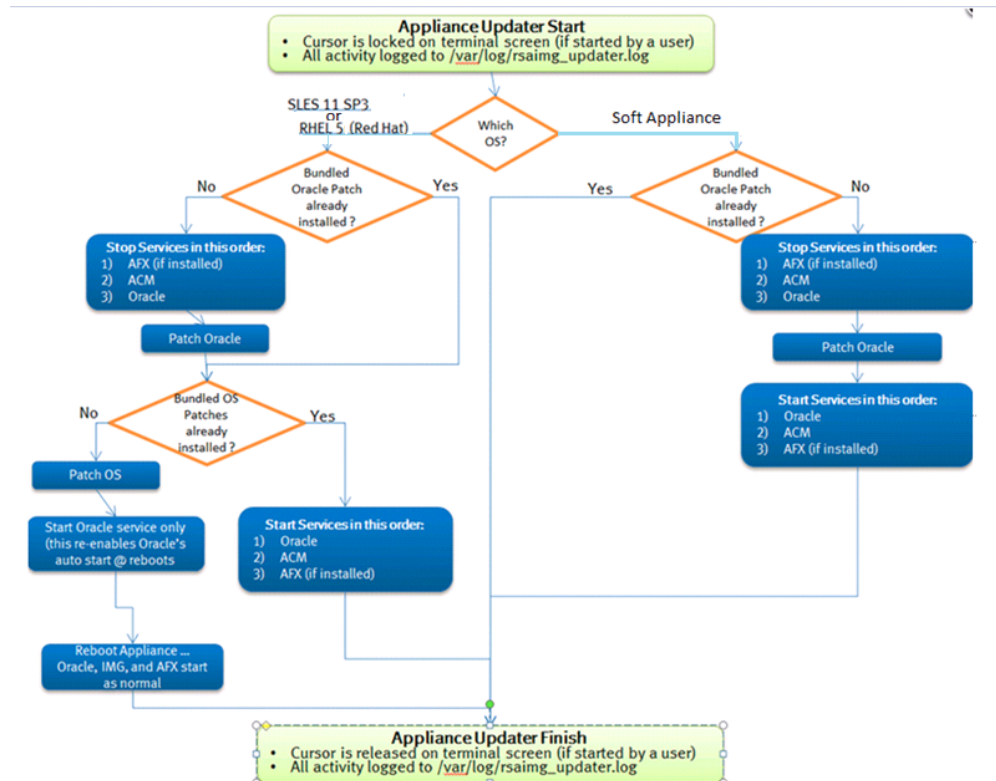
On a regular basis, RSA bundles patches for the Oracle installation and the SUSE or RedHat operating system components of the appliance into a compressed file (rsaimg_updater_<version_number>_<platform>.tar.bz2) and posts it to SecureCare Online (SCOL) for you to download. The compressed file may contain patches for components that RSA IMG has supplied: SUSE or RedHat and Oracle, as well as updates to the Appliance Updater.

See Also

- [Install the Appliance Updater](#)
- [Update the Appliance](#)

Update Process Overview

The following image depicts the operating system and database update process.



Update the Appliance

Procedure

1. Download the latest update package (rsaimg_updater_<version>_<platform>.tar.bz2) for your operating system from RSA Secure Care Online (SCOL) at <https://auth.rsasecurity.com>.

For example:

- rsaimg_updater_6.9.1_P03_rhel5-11g.tar.bz2
- rsaimg_updater_6.9.1_P03_sles11-11g.tar.bz2

2. Schedule downtime for the RSA IMG Appliance.

Note: RSA IMG is unavailable while the Appliance Updater is applying patches. When a patch is applied to the database, the Appliance Updater stops and restarts the RSA IMG service. When a patch is applied to the operating system, the Appliance Updater reboots the appliance to ensure that the latest components are being used.

3. Install the latest Appliance Updater on the appliance.
4. Run the Appliance Updater to update the operating system and the database.

See Also

[Install the Appliance Updater](#)

Install the Appliance Updater

Use this procedure to install the latest version of the Appliance Updater.

Procedure

1. Log on to the appliance as root.
2. Download the compressed Appliance Updater file to the appliance.
3. If this is the first time that you have installed the Appliance Updater, complete the following tasks; otherwise go to Step 4:

- a. Create a directory for the extracted files:

```
mkdir -p /opt/appliancePatches
```

- b. Change the permissions on the directory:

```
chmod 760 /opt/appliancePatches
```

4. Extract the files to the appliancePatches directory:

```
tar jxf rsaimg_updater_<version>_<platform>.tar.bz2 -C /opt/appliancePatches/
```

For example:

- `rsaimg_updater_6.9.1_P03_rhel5-11g.tar.bz2`
- `rsaimg_updater_6.9.1_P03_sles11-11g.tar.bz2`

5. Copy the Appliance Updater (`rsaimg_updater`) to `/etc/init.d`:

```
cp -f /opt/appliancePatches/rsaimg_updater /etc/init.d/
```

6. Change the permissions on the Appliance Updater file:

```
chmod 700 /etc/init.d/rsaimg_updater
```

7. (Optional) Register the Appliance Updater service:

```
chkconfig rsaimg_updater on
```

Note: Once you register the service, it runs automatically whenever the appliance is restarted, installing any new updates found in the `/opt/appliancePatches` directory. Otherwise, you must issue the updater command.

See Also

[Update the Appliance Operating System and Database](#)

Update the Appliance Operating System and Database

Run the Appliance Updater after you have downloaded updated patches.

Procedure

1. Log on to the appliance as root.
2. Run the Appliance Updater.

If you chose to register the Appliance Updater service when you installed the Appliance Updater, enter the following command:

```
service rsaimg_updater start
```

Otherwise, enter the following command:

```
/etc/init.d/rsaimg_updater start
```

See Also

[Updater Options](#)

Updater Options

The Appliance Updater (rsaimg_updater) includes the following options that allow you to update the RSA IMG appliance operating system and database, check if an update is running, and stop the update.

Option	Description
start	Starts the update: <ul style="list-style-type: none"> • For an RSA IMG appliance with Oracle installed, patches are installed for the operating system and the database. • For an RSA IMG appliance using a remote database, patches are installed for the operating system. • For a soft-appliance with Oracle installed, patches are installed for the database. • For a soft-appliance using a remote database, no patches are installed.
stop	Stops a running update.
status	Indicates if an update is running.
startOS	Updates the operating system on an RSA IMG appliance.
startDB	Updates the database on an RSA appliance and on a soft-appliance

Option	Description
	installation that uses the database provided by RSA..