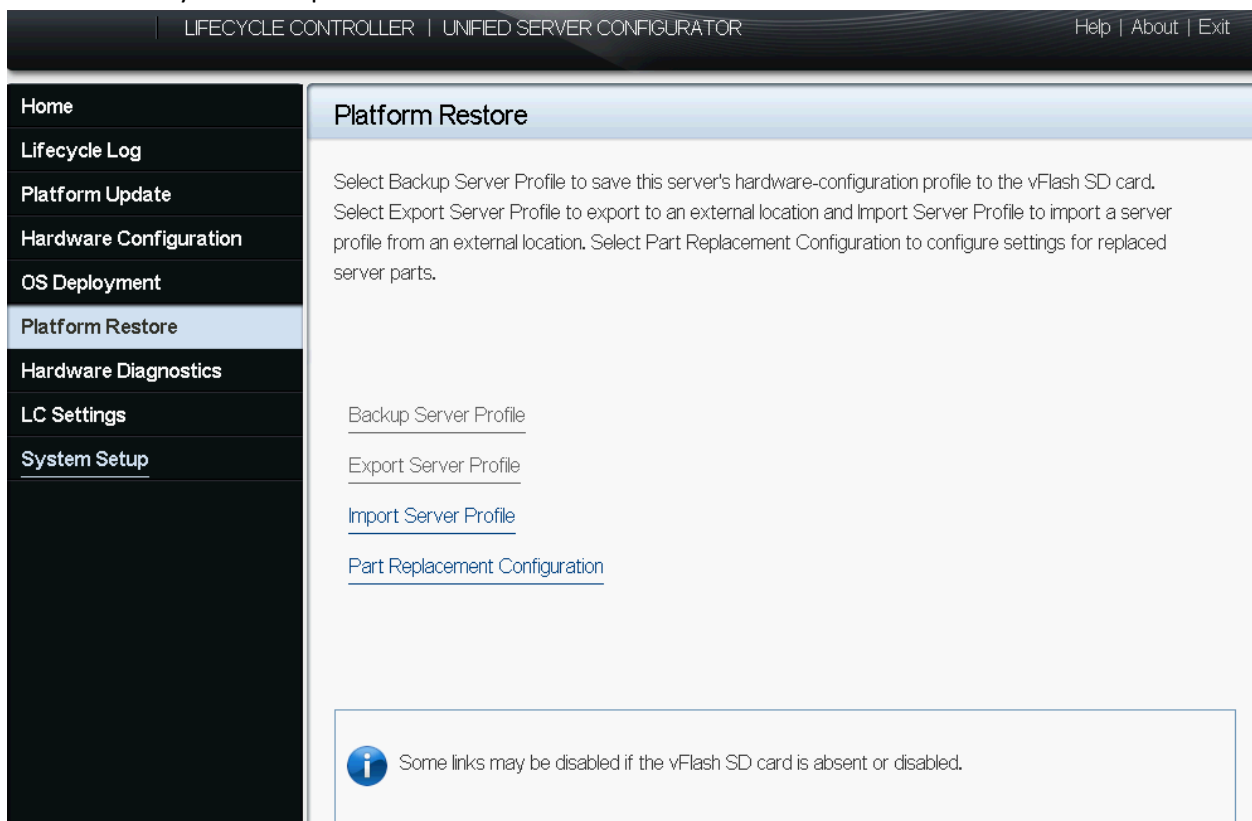


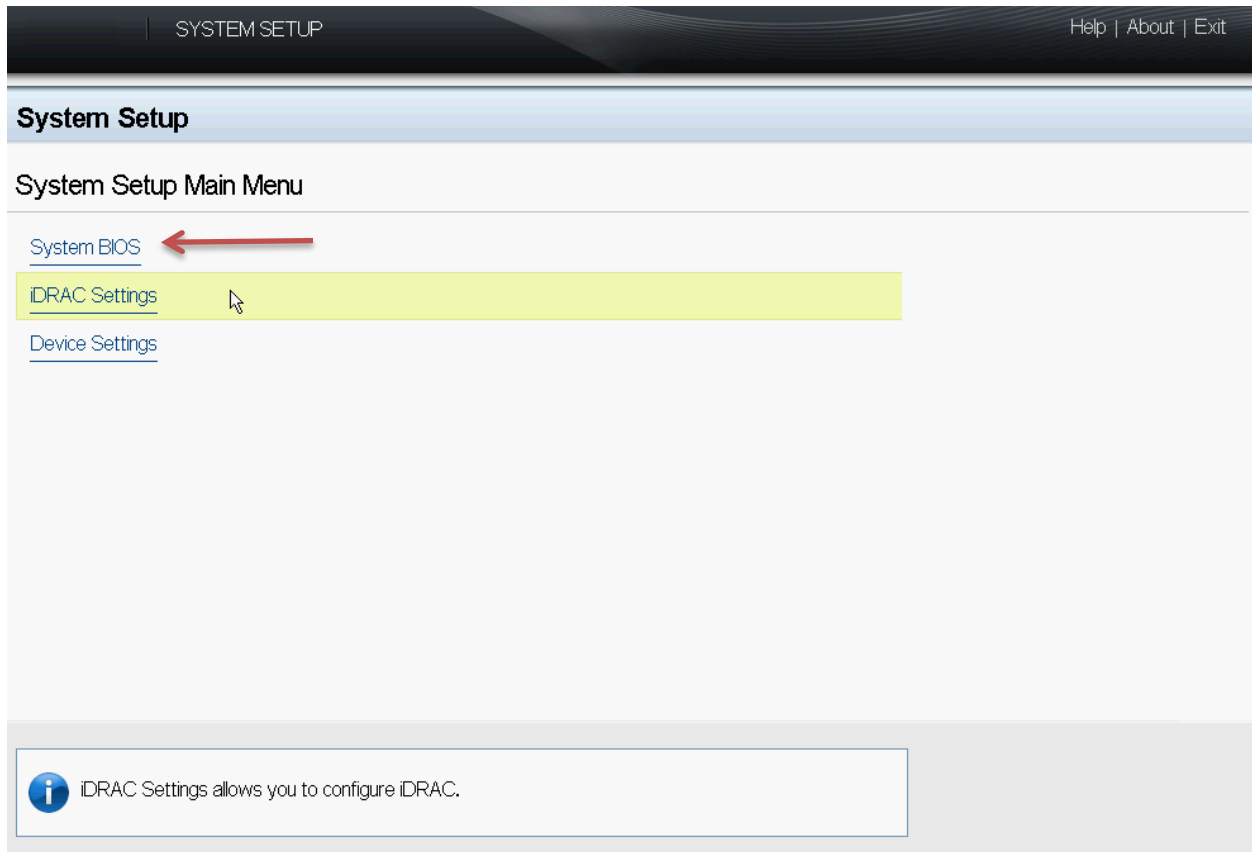
1. Press F10 to enter the Lifecycle Controller



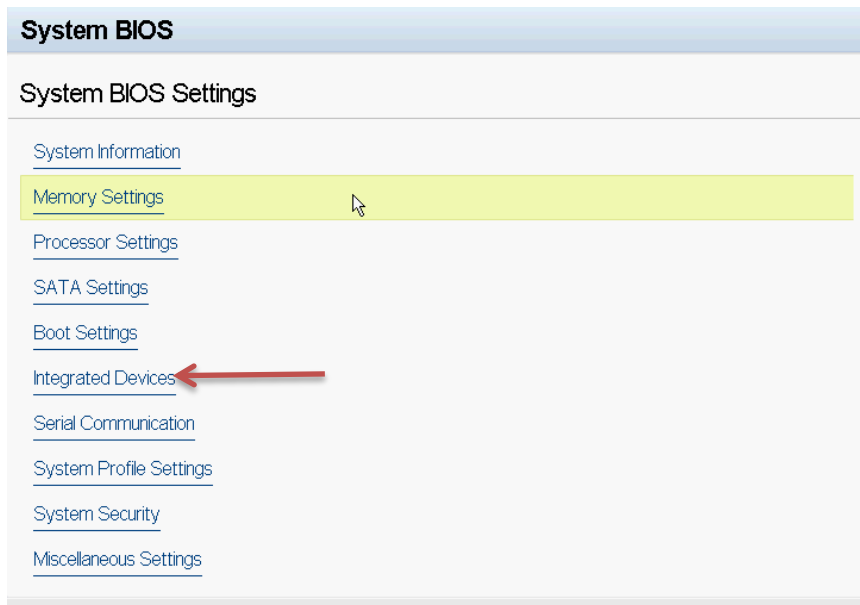
2. Click System Setup



3. Advanced Hardware Configuration
4. Select system bios




5. Select integrated devices




6. Disable your “internal SD Card Port”

System BIOS

System BIOS Settings • Integrated Devices

- Integrated RAID Controller Enabled Disabled
- User Accessible USB Ports All Ports On Only Back Ports On All Ports Off
- Internal USB Port On Off
- Internal SD Card Port On Off 
- Internal SD Card Redundancy Disabled Mirror
- Integrated Network Card 1 Enabled Disabled (OS)
- OS Watchdog Timer Enabled Disabled
- Embedded Video Controller Enabled Disabled
- SR-IOV Global Enable Enabled Disabled

Slot Disablement


 The Slot Disablement feature controls the configuration of PCIe cards installed in the specified slot. Only slots that are present on your system will be available for control.

7. If you have a DAC attached then disable the Perc 810 which is located in Slot Disablement-slot 1.

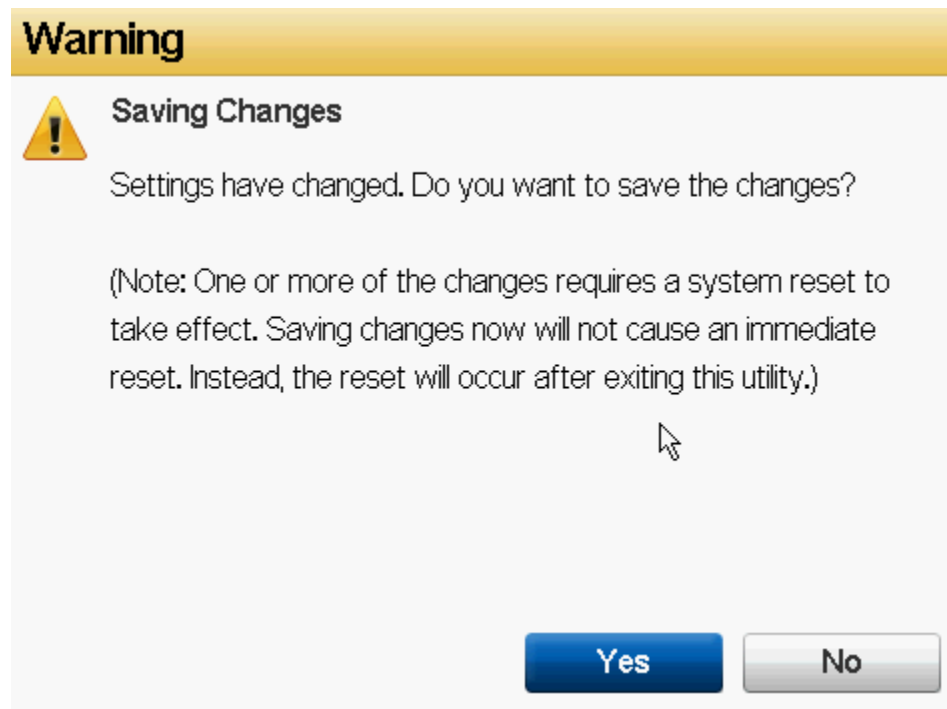
System BIOS

System BIOS Settings • Integrated Devices • Slot Disablement

- Slot 1 Enabled Disabled 
- Slot 2 Enabled Disabled Boot Driver Disabled
- Slot 3 Enabled Disabled Boot Driver Disabled

 This field controls the configuration of the card installed in this slot. You can set one of the following options for each of the cards:

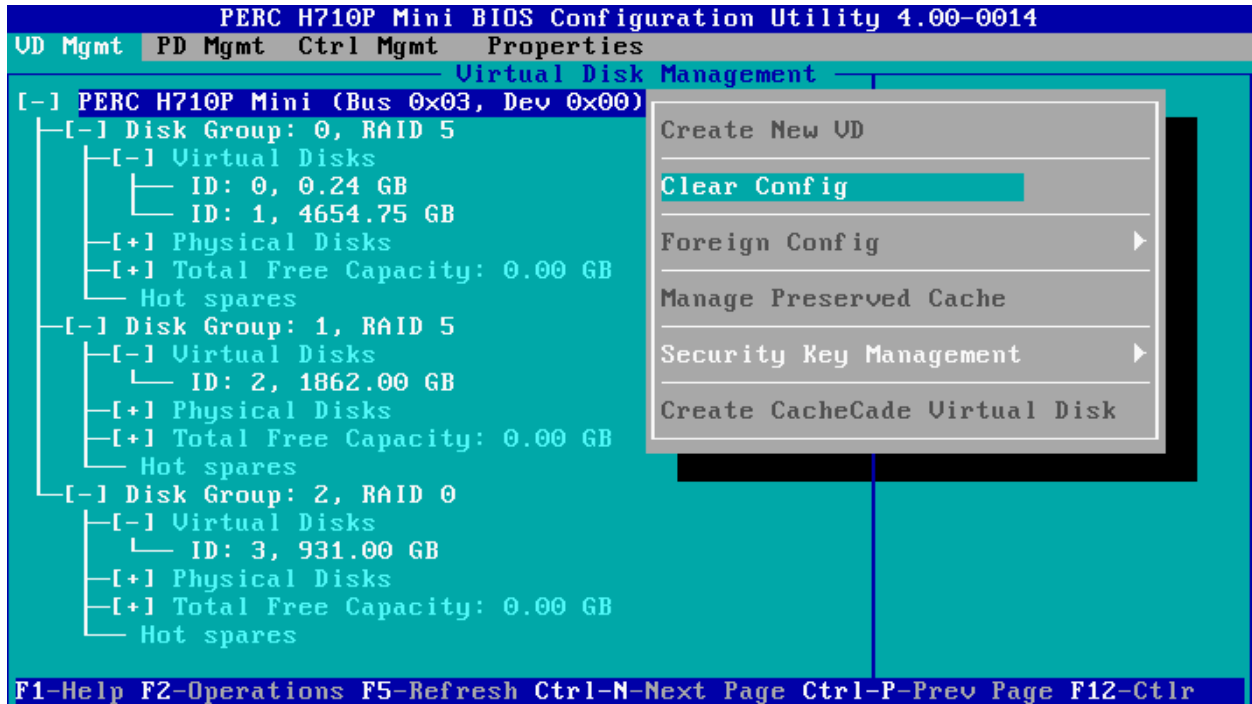
8. Click Back, back, finish



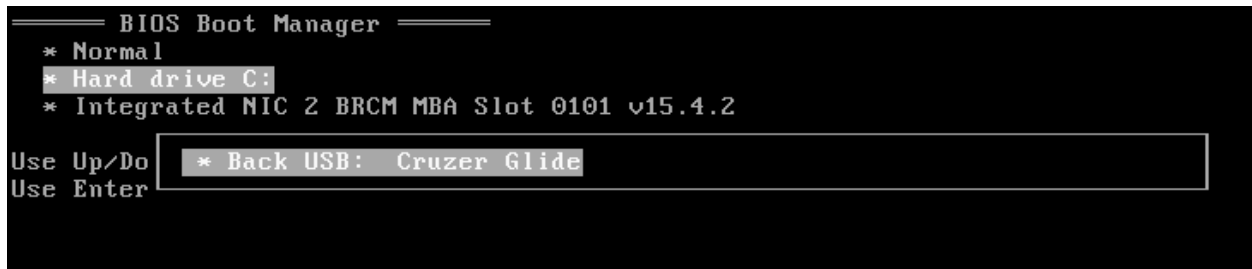
9. Save your settings with "Yes"
10. Click "ok"
11. Click "finish"
12. Confirm Exit
13. System will restart
14. Press ctrl +r to enter the raid controller

```
Press Ctrl-S to enter Configuration Menu
PowerEdge Expandable RAID Controller BIOS
Copyright(c) 2011 LSI Corporation
Press <Ctrl><R> to Run Configuration Utility
```

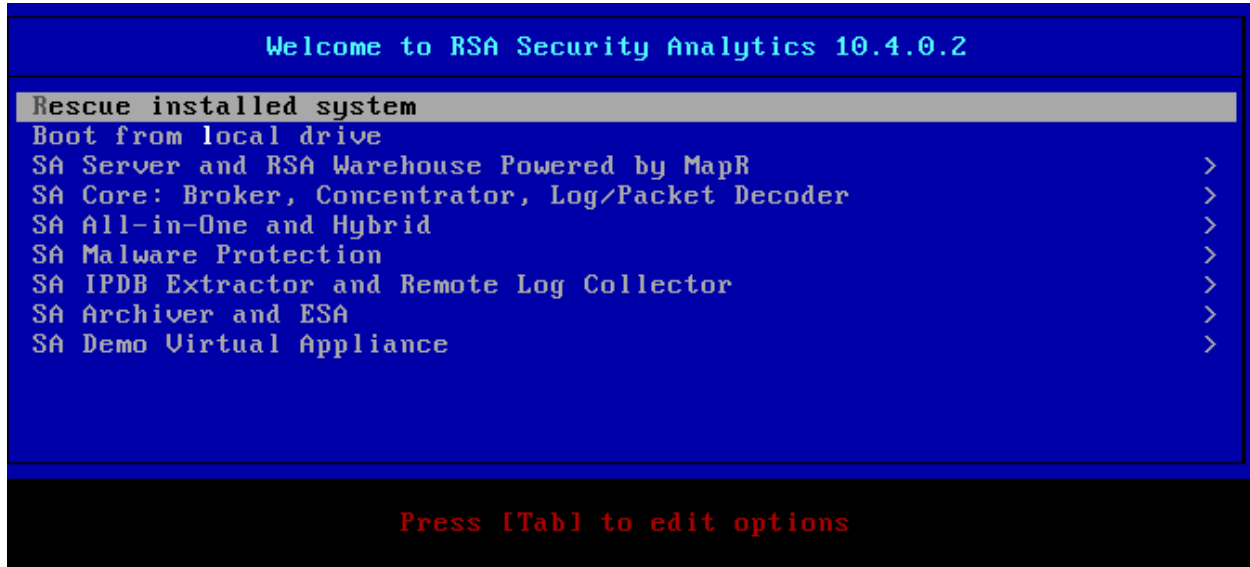
15. Navigate to the top perc 710P mini
16. Press F2
17. Clear Config,
18. Are you sure you want to clear the configuration? "yes"



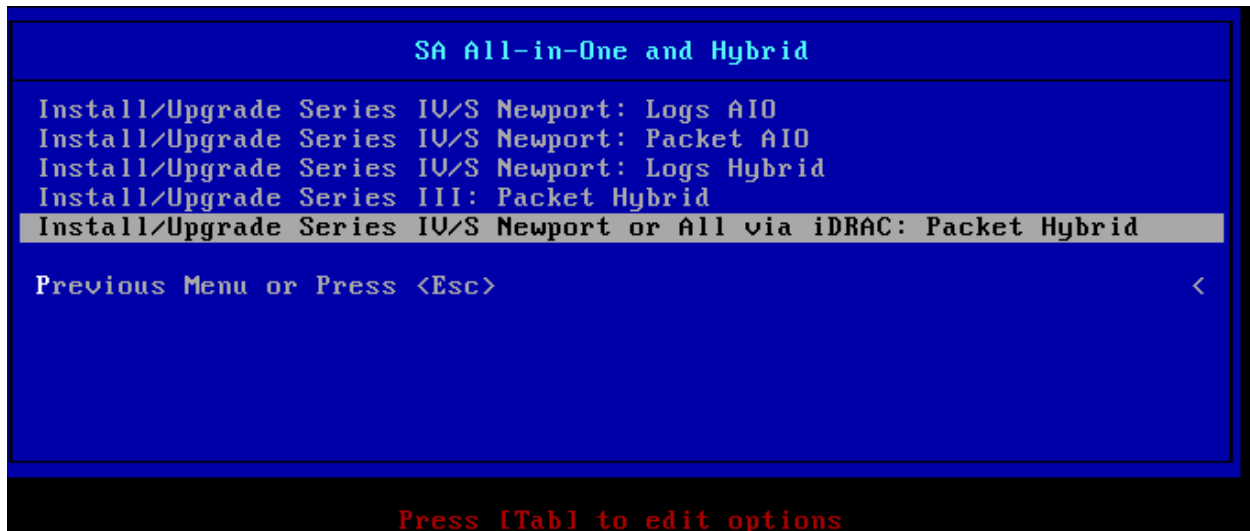
19. Press "esc"
20. Select OK and then control+alt+Delete
21. Press F11 on boot to enter the bios boot manager
22. Select bios boot menu
23. User the down arrow to navigate to the back usb stick
24. Press enter to launch



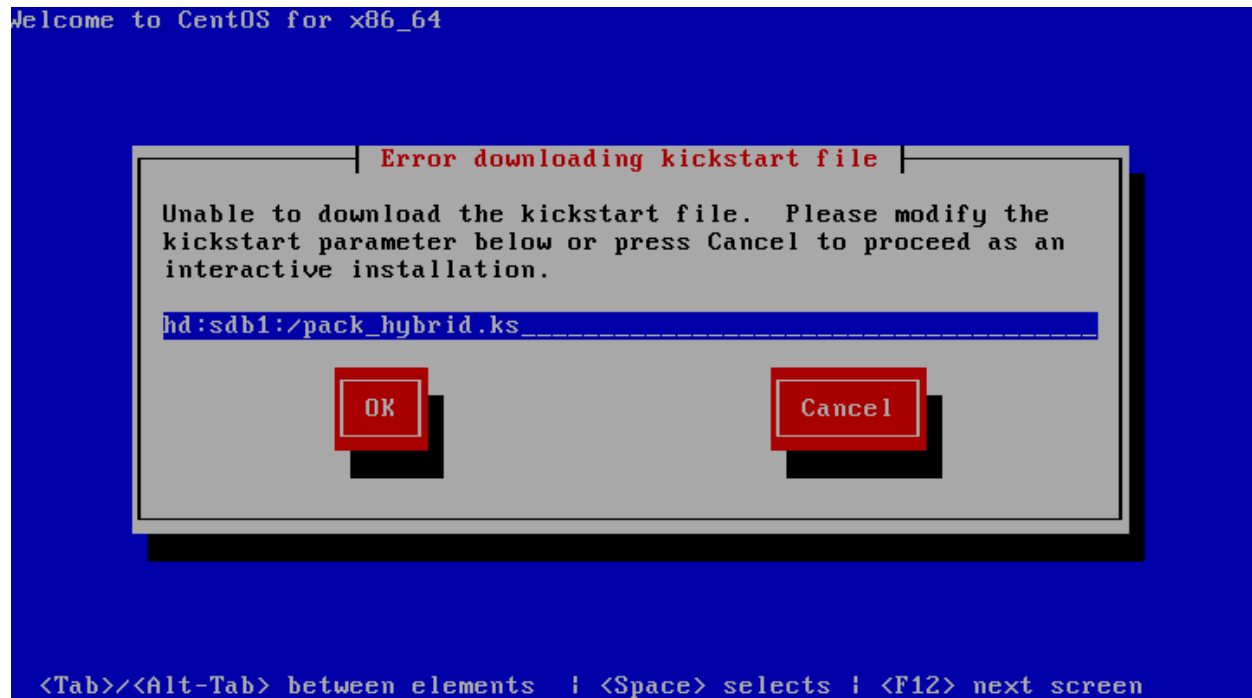
25. Select the type of device that you want to install



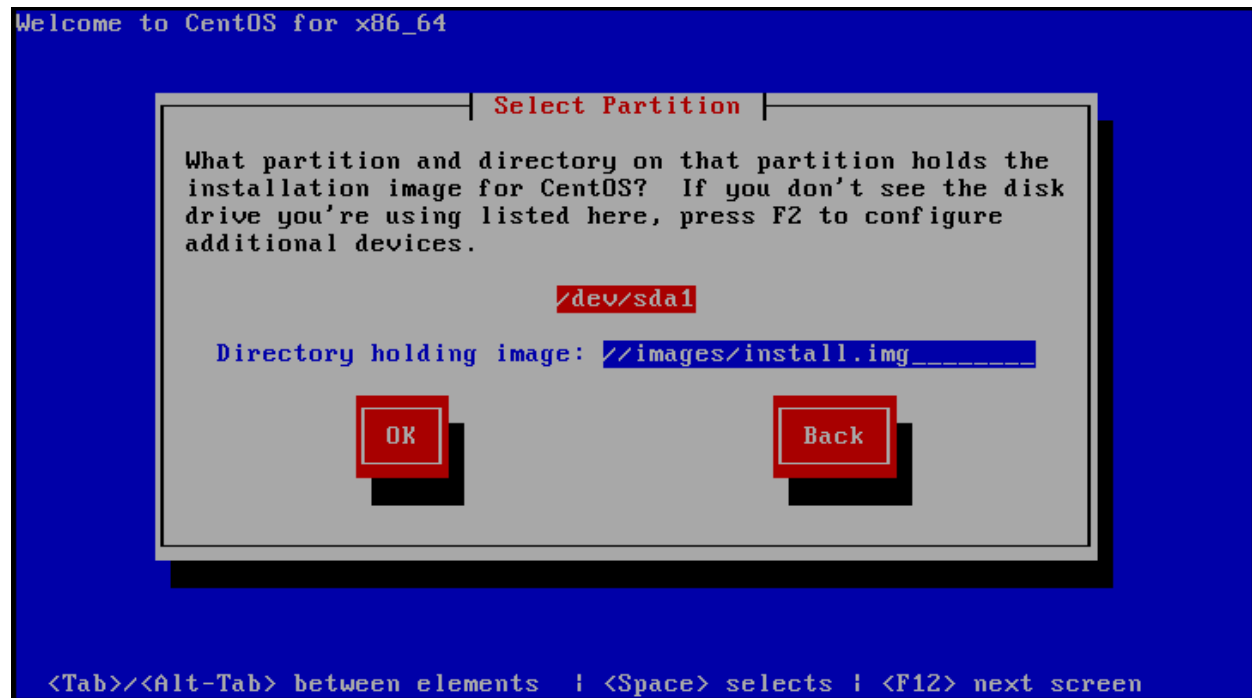
Example series IV/S Packet Hybrid via iDRAC



26. If you receive an error about not being able to find the kick start script Change:
 hd:sdb1:/pack_hybrid.ks to hd:sda1:/pack_hybrid.



27. Press ok



28. Type "y" then press enter to wipe the h710 controller

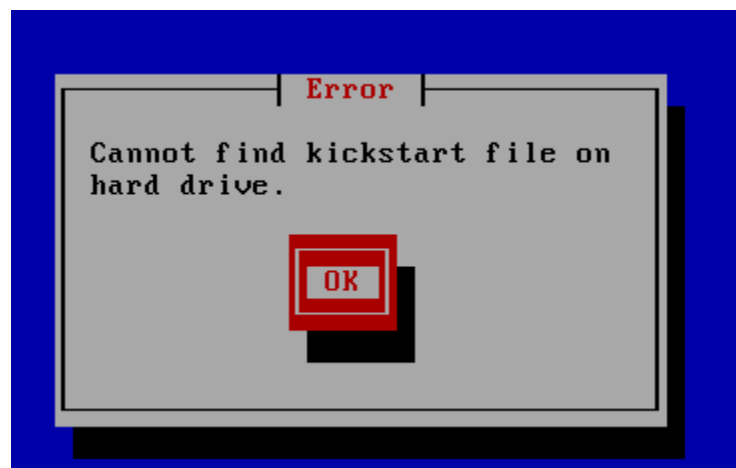
```
-----  
Clear virtual drive configuration on RAID controller: 0 ?  
HBA: PERC H710P Mini #VD: 0 #PD: 10  
For Upgrades either ignore or answer No to this prompt  
Recommended for new hardware or re-purposing **Warning**  
data on all configured drives will be discarded, this  
includes internal SATA/SCSI storage and attached external  
RAID storage on applicable cards, i.e. JBOD enclosures  
Enter (y/Y) to clear drives, defaults to No in 30 seconds  
-----  
?  
Current UEFI/BIOS root: 137 60 130 57
```

29. Press enter to reboot

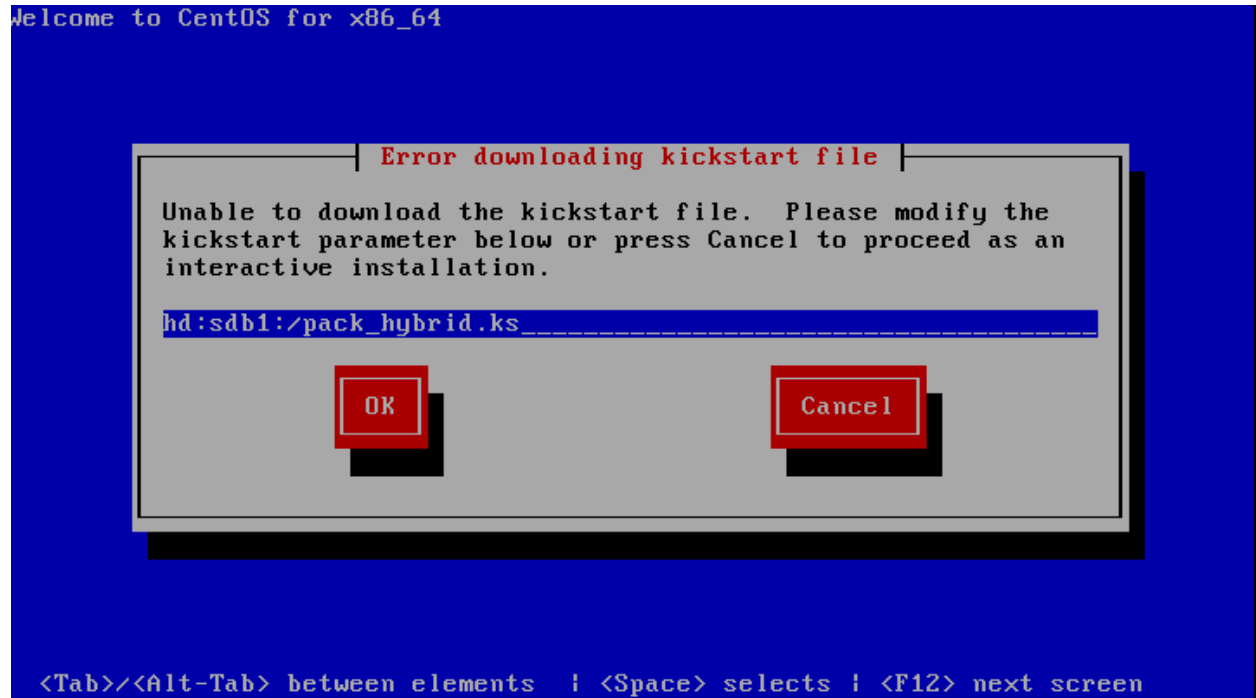
```
Exit Code: 0x00  
  
Run installation again after restart  
Press enter to reboot
```

30. The system will now reboot and you will need to follow steps 21-25 again before you will see the next screen. Select the same device as you picked last time.

31. Press ok to the error



32. change the line to hd:sda1:/pack_hybrid.ks if the error about missing kick start file appears.



33. Leave the defaults and select OK



34. Either type "n" or let the system default to no in 30 seconds

```
-----  
Clear virtual drive configuration on RAID controller: 0 ?  
HBA: PERC H710P Mini #UD: 4 #PD: 10  
For Upgrades either ignore or answer No to this prompt  
Recommended for new hardware or re-purposing **Warning**  
data on all configured drives will be discarded, this  
includes internal SATA/SCSI storage and attached external  
RAID storage on applicable cards, i.e. JBOD enclosures  
Enter (y/Y) to clear drives, defaults to No in 30 seconds  
-----  
?
```

35. Just wait for 120 seconds

```
-----  
Detected OS Level: CentOS release 6.5 (Final)  
-----  
Same OS major version upgrades are not supported  
For example upgrading CentOS 6.3 -> CentOS 6.5  
If you had intended to upgrade please quit and  
contact support, <CTRL><ALT><DEL> to restart  
Prompting for install/reinstall in 120 seconds  
-----
```

```
-----  
This system is eligible for a Install or Re-install  
Installs/Re-installs clear all partitions and data  
If upgrading please quit and retry, if the problem  
persists quit again and contact product support  
Please quit and backup any data before proceeding  
Enter Y to Install/Re-install, Q to Quit  
-----  
Proceed or Quit, defaults to Yes in 120 seconds Y/Q? _
```

36. The system will automatically restart and advise you to run the installation again.
37. Follow steps 21 – 27.
38. Make sure to select No to wipe the raid again
39. Type "y" and press enter.

```
examining system storage ...

detecting linux raid devices
performing volume group scan
  Reading all physical volumes.  This may take a while...
  No volume groups found
  No volume groups found
running volume group check
  Finding all volume groups
  No volume groups found
activating volume groups
  No volume groups found

-----
This system is eligible for a Install or Re-install
Installs/Re-installs clear all partitions and data
If upgrading please quit and retry, if the problem
persists quit again and contact product support
Please quit and backup any data before proceeding
Enter Y to Install/Re-install, Q to Quit
-----
Proceed or Quit, defaults to Yes in 120 seconds Y/Q? y
```

40. It will install the packages

```
Welcome to CentOS for x86_64

Package Installation

0%

Packages completed: 9 of 448

Installing glibc-common-2.12-1.132.el6_5.4.x86_64 (107 MB)
Common binaries and locale data for glibc

<Tab>/<Alt-Tab> between elements | <Space> selects | <F12> next screen
```

41. Remove the flash drive and reboot or wait for the reboot to take place.

```
calling %post function: configure_cotowarec
calling %post function: install_core_services concentra
calling %post function: check_post_package
calling %post function: bakimagefiles
calling %post function: kill_installer

-----
Install/Upgrade process has completed
Please disconnect any installation
media and boot to operating system
The system will restart in 30 seconds

Enter (y/Y) to terminate the anaconda
install process allowing access to a
bash shell. NOTE: this feature is for
for debugging purposes and may cause
unexpected results, defaults to No
-----
Enter (y/Y) to terminate anaconda, defaults to No?
```

42. Make sure to enable slot 1 from the system bios > integrated evcies > slot disablement as shown in step 7.