

# **RSA SECURID<sup>®</sup> ACCESS**

## **Standard Agent Client Implementation Guide**

### **BIG-IP Edge Client**

Peter Waranowski, RSA Partner Engineering  
Last Modified: April 13<sup>th</sup>, 2017



## Solution Summary

The F5 BIG-IP Edge clients support RSA SecurID Access for users establishing SSLVPN and VPN tunnels for secure remote connectivity. This solution provides two-factor authentication which is stronger and more rigorous than traditional passwords, which are typically one factor, the user's password.

By combining RSA Security technologies with F5, organizations provide increased flexibility better matching the security and infrastructure needs which gives users a unified, easy interface and a simplified authentication experience.

RSA SecurID native UDP agent and RADIUS integrations are available for the F5 BIG-IP appliance and VE.

RSA SecurID Access Features	
F5 BIG-IP Edge Client	
<b>Authentication Manager Methods</b>	
RSA SecurID	<input type="text" value="Yes"/>
On Demand Authentication	<input type="text" value="Yes"/>
Risk-Based Authentication	<input type="text" value="No"/>
<b>Cloud Authentication Service Methods</b>	
Authenticate App	<input type="text" value="Yes"/>
FIDO Token	<input type="text" value="No"/>
<b>Identity Assurance</b>	
Collect Device Assurance and User Behavior	<input type="text" value="No"/>
<b>Software Token Automation</b>	
Windows	<input type="text" value="No"/>
Mac	<input type="text" value="No"/>
Android	<input type="text" value="No"/>
iOS	<input type="text" value="No"/>



## Partner Product Configuration

---

### ***Before You Begin***

This section provides instructions for configuring BIG-IP Edge Client to work with RSA SecurID Access. This document is not intended to suggest optimum installations or configurations.

It is assumed that the reader has both working knowledge of all products involved, and the ability to perform the tasks outlined in this section. Administrators should have access to the product documentation for all products in order to install the required components.

All F5 BIG-IP components must be installed and working prior to the integration. Perform the necessary tests to confirm that this is true before proceeding.

### ***Integration Summary***

#### **Configure the F5 server for RSA SecurID Access**

The F5 server logon point must be configured for SecurID Access. Refer to the RSA Ready Implementation guide for F5 BIG-IP and/or F5 FirePass for information on how to integrate these systems with RSA SecurID Access.

#### **Configure BIG-IP Edge Client for RSA SecurID Access**

There is no specific client-side configuration for enabling RSA SecurID Access with BIG-IP Edge Client. When BIG-IP Edge Client opens a connection to an F5 server which is configured for RSA SecurID Access, then the user must authenticate using SecurID credentials.

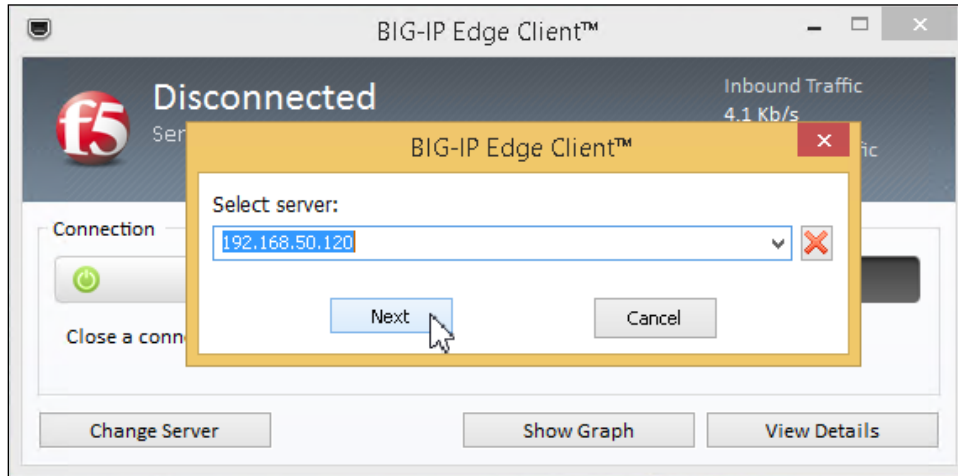
### ***Configure BIG-IP Edge Client for RSA SecurID Authentication***

#### **BIG-IP Edge Client for Desktop (Windows)**

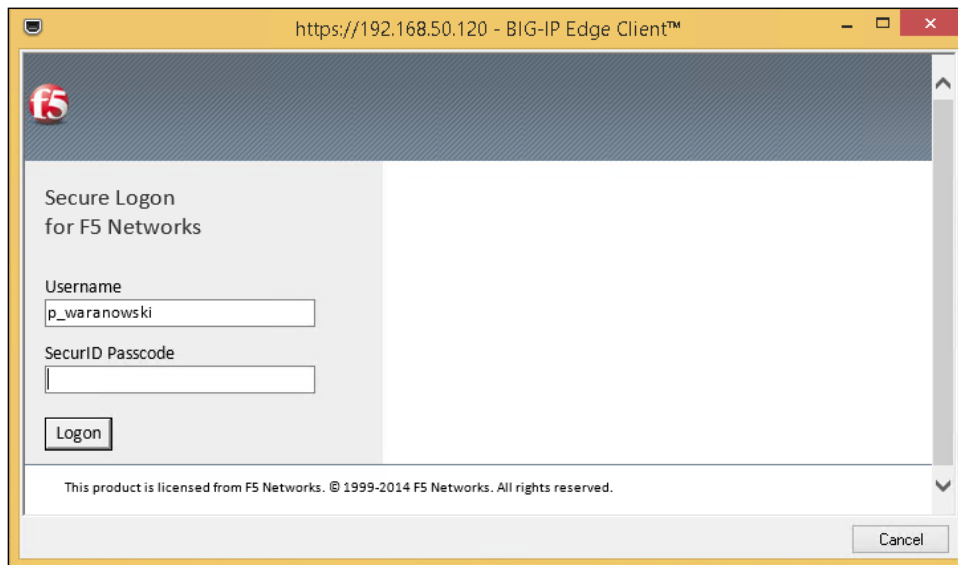
1. Download and install the BIG-IP Edge Client from your BIG-IP or FirePass appliance.



2. Launch the client and enter the hostname or IP of the server you are connecting to and click **Next**.

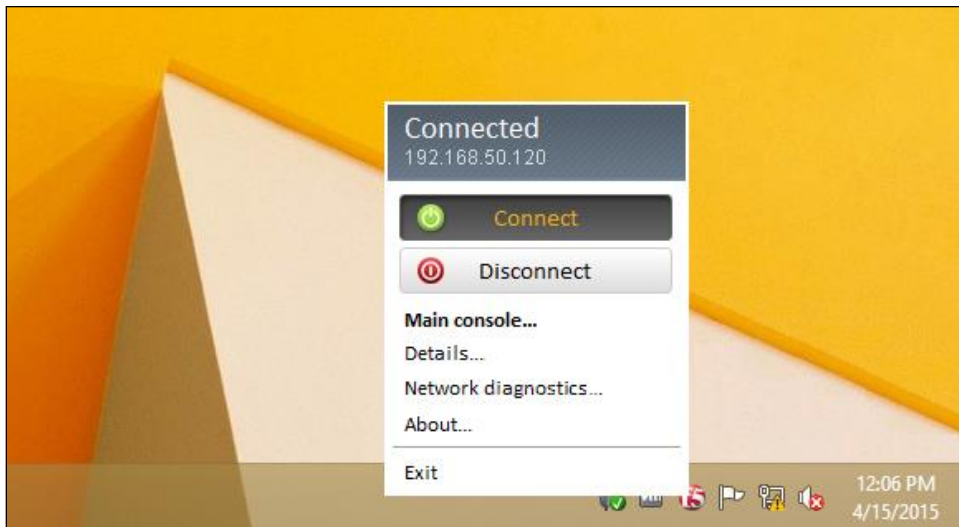


3. Logon with your RSA SecurID credentials.





The F5 icon in the system tray indicates that the Edge Client is connected.



### BIG-IP Edge Client for Mobile (iPad)

1. Download and install the BIG-IP Edge Client from the App Store.
2. Launch the client and tap the **i** to open the **Choose a Configuration** context menu.

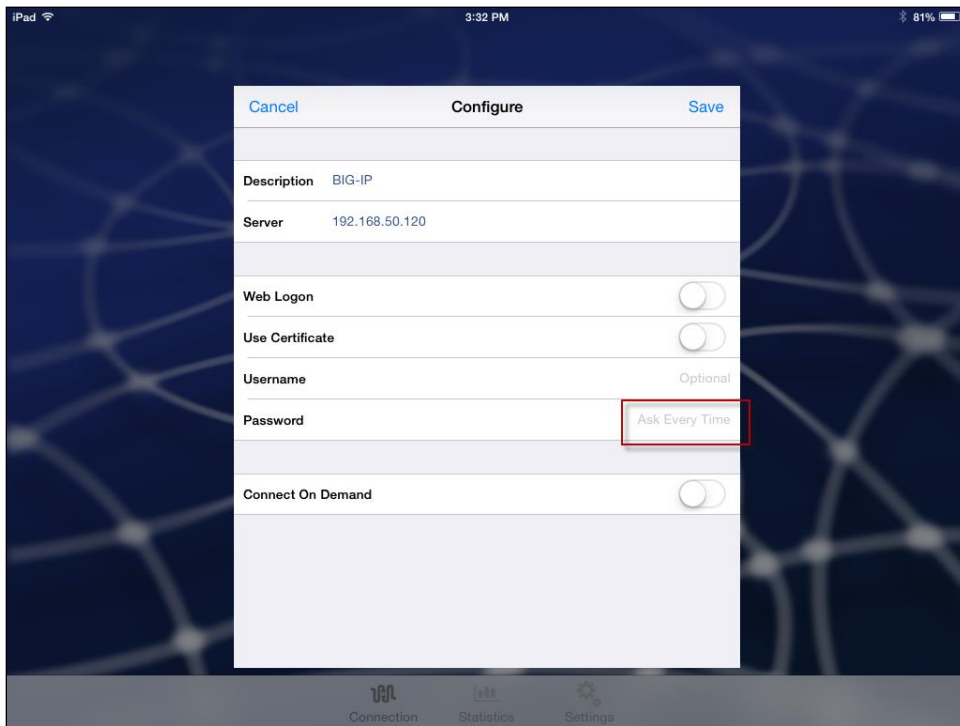




3. Tap on **Add Configuration**.



4. Enter a **Description**, hostname or IP in the **Server** field, set **Password** to **Ask Every Time** and tap **Save**.





5. Tap **Connect** to open the connection to the server.



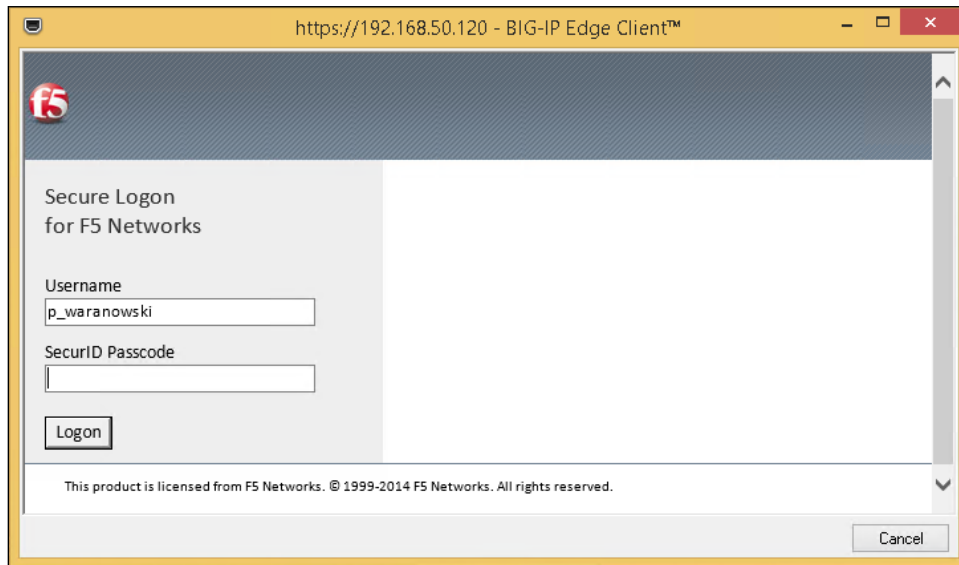


## Screens

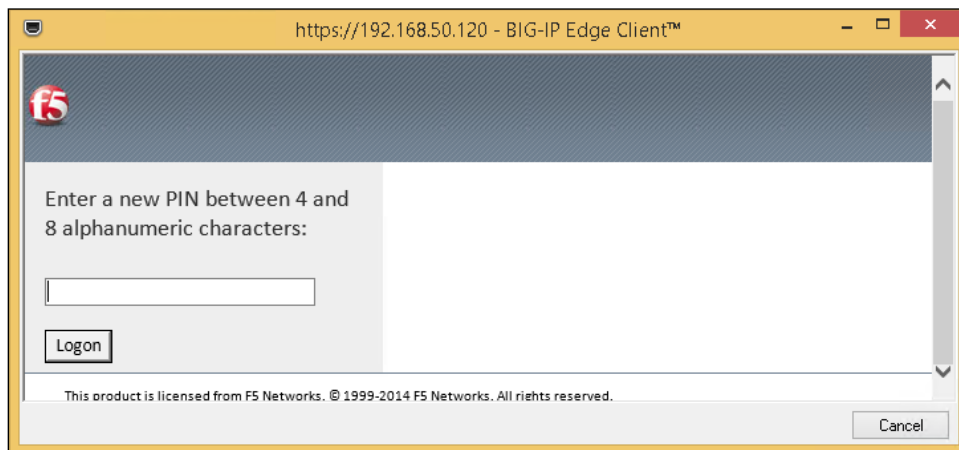
---

### Desktop (Windows)

Login screen:



User-defined New PIN:







System-generated New PIN:

The screenshot shows a web browser window titled "https://192.168.50.120 - BIG-IP Edge Client™". The page features the F5 logo in the top left corner. The main content area displays the following text: "Your new PIN is: koD2", "Wait for the tokencode to change if you have a token.", and "Please enter a new PASSCODE:". Below this text is a single-line text input field. A "Logon" button is positioned below the input field. At the bottom of the page, there is a small copyright notice: "This product is licensed from F5 Networks. © 1999-2014 F5 Networks. All rights reserved." and a "Cancel" button in the bottom right corner.

Next Tokencode:

The screenshot shows the same web browser window as above. The main content area now displays the text: "Wait for the tokencode to change, then enter the new tokencode:". Below this text is a single-line text input field. A "Logon" button is positioned below the input field. The copyright notice and "Cancel" button remain at the bottom of the page.



## Certification Checklist for RSA SecurID Access

### Cloud Authentication Service

#### Certification Environment Details:

RSA Authentication Manager 8.2, Virtual Appliance

F5 BIG-IP 12.1, Virtual Appliance

F5 BIG-IP Edge Client 7130.2016.0330.0220, Windows 10, 64bit

F5 BIG-IP Edge Client 7130.2016.0324.1, Mac OS 10.11 El Capitan

F5 Access 3.0.0, Android 7.1.1

F5 Access 2.1.0 iOS 9.3.3

#### RADIUS

Date Tested: April 4<sup>th</sup>, 2017

	Windows	OS X	Android	iOS	Other
RSA SecurID	✓	✓	✓*	✓*	N/A
LDAP Password	✓	✓	✓	✓	N/A
Authenticate Approve	✓	✓	✓*	✓*	N/A
Authenticate Tokencode	✓	✓	✓*	✓*	N/A

✓ = Pass ✗ = Fail N/A = Non-Available Function

\* See known issues for more information



## Certification Checklist for RSA SecurID Access

### ***RSA Authentication Manager***

RSA Authentication Manager 8.2, Virtual Appliance

F5 BIG-IP 12.1, Virtual Appliance

F5 BIG-IP Edge Client 7130.2016.0330.0220, Windows 10, 64bit

F5 BIG-IP Edge Client 7130.2016.0324.1, MacOS 10.11 El Capitan

F5 BIG-IP Edge Client 2.0.8, Android 6.0.1

F5 BIG-IP Edge Client 2.0.9, iOS 9.3.5

### **RSA SecurID Authentication**

Date Tested: September 8<sup>th</sup>, 2016

	<b>Windows</b>	<b>Mac</b>	<b>Android</b>	<b>iOS</b>	<b>Other</b>
REST	N/A	N/A	N/A	N/A	N/A
UDP Agent	✓	✓	✓	✓	N/A
TCP Agent	N/A	N/A	N/A	N/A	N/A
RADIUS	✓	✓	✓*	✓*	N/A

✓ = Pass ✗ = Fail N/A = Non-Available Function

\* See known issues for more information

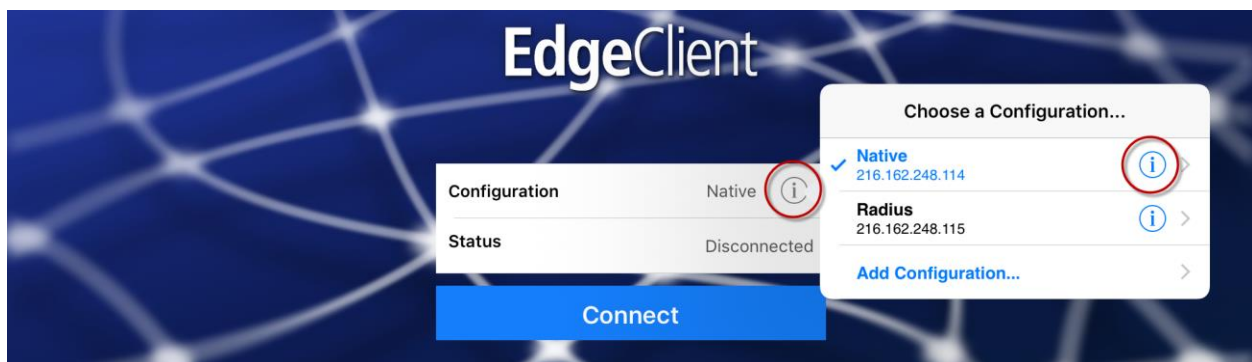
## Known Issues

### **BIG-IP Edge Client for Android and IOS require Web Logon mode to support multi-step authentication flows.**

When you start an authentication flow in non-Web Logon mode it requires additional steps (i.e. new PIN, next tokencode) then authentication will fail at the point when the user should be prompted for additional information. It is not clear to the user why authentication fails.

To enable Web Logon mode:

1. Open the configuration page for your connection profile.



2. Click the **Web Logon** slider to the enabled position.

