

RSA SMS HTTP Plug-In Implementation Guide

Last Modified: December 27, 2010

Partner Information

Product Information	
Partner Name	Logix Mobile
Web Site	www.logixmobile.com
Product Name	swiftSMS
Version & Platform	4.1 for Windows
Product Description	swiftSMS is a integrated SMS Gateway and Programmable SMS application Server software package. It uses industry standard scripting languages VBScript and Javascript or Web Services for application programming and can therefore connect to virtually any enterprise information source (database server, web server, email server, file server etc.). swiftSMS can receive SMS using GSM Modems and send SMS using GSM Modems and/or web based SMS gateways. Scripts can be written for swiftSMS to deploy interactive query-response, bulk messaging, scheduled messaging etc for applications like supply chain information, logistics, mobile banking, billing alerts, sales information, stock/inventory status, mobile email (mail-to-sms & sms-to-mail), enterprise network monitoring, insurance, airlines information, public information, production information, customer support, health care, advertising, market research etc.



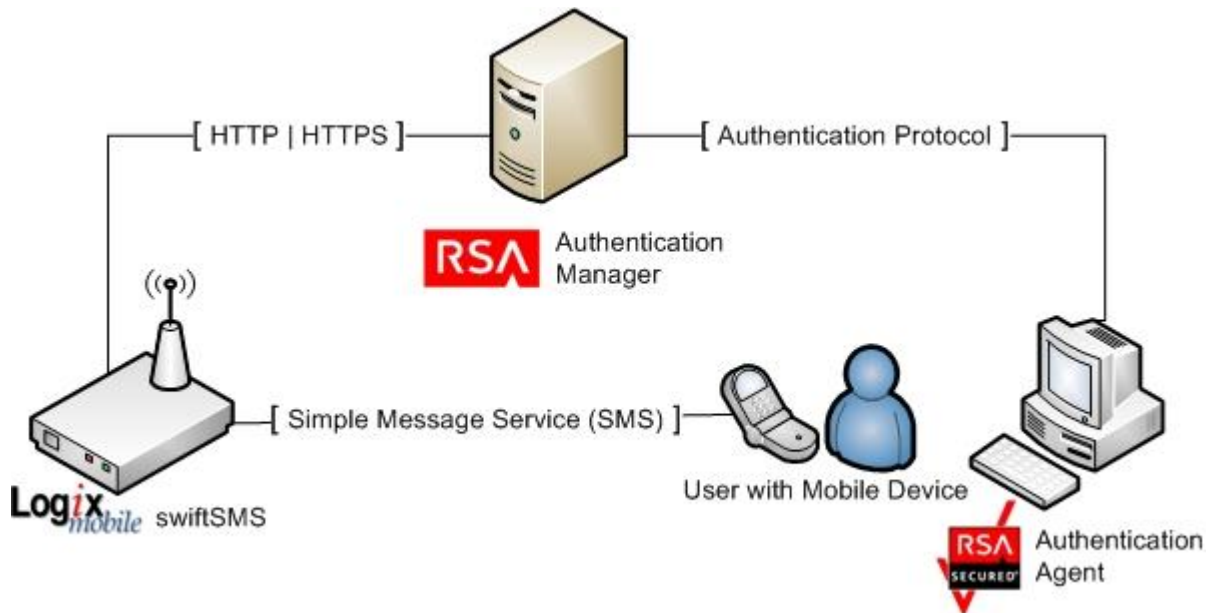


Solution Summary

RSA Authentication Manager can be configured to utilize Logix Mobile swiftSMS for delivery of on-demand tokencodes to be used in on-demand authentications.

When a user authenticates to an agent using his/her username and on-demand PIN, the RSA Authentication Manager sends the on-demand tokencode and mobile number to Logix Mobile swiftSMS using the HTTP or HTTPS protocol. Logix Mobile swiftSMS then delivers the on-demand tokencode to the user's mobile device via Short Message Service (SMS.) The authentication process is completed when the user enters the on-demand tokencode into the agent's prompt for next tokencode.

RSA HTTP Plug-In Supported Functions	
Logix Mobile swiftSMS 4.1	
Integrates with HTTP Plug-In via HTTP	Yes
Integrates with HTTP Plug-In via HTTPS	Yes





SMS HTTP Plug-In Configuration

RSA Authentication Manager can be configured to integrate a supported Short Message Service (SMS) provider using HTTP, HTTPS, or XML-over-HTTP to deliver on-demand tokencodes to a user's mobile phone.

! > Important: HTTP connections are not secure. Sensitive information, such as a tokencode, may be exposed. For secure connections, configure HTTPS.

Before configuring the HTTP Plug-In, you must locate the configuration parameters and base URL. This information is identified during the configuration of Logix Mobile swiftSMS. You must include the following elements within your provider's parameters to retrieve data from the corresponding fields.

Required HTTP Plug-In Parameters	
Elements	Description
\$cfg.user	Account User Name
\$cfg.password	Account Password
\$msg.address	User Attribute to Provide SMS Destination
\$msg.message	On-Demand Tokencode Message

SMS HTTP Plug-In is configured in the RSA Authentication Manager's Security Console. The configuration page has three sections:

- Tokencode Delivery by SMS
- SMS Provider Configuration
- SMS HTTP Proxy Configuration (optional)

Tokencode Delivery by SMS

- Mark the Delivery by SMS checkbox to enable the delivery of On-Demand Tokencodes using SMS service.
- Select the User Attribute to Provide SMS Destination from the drop-down menu.
- (Optional) Select the Default country code from the drop-down menu.
- Select HTTP from the SMS Plug-In drop-down menu.

Tokencode Delivery by SMS	
<input type="checkbox"/> Delivery by SMS:	<input checked="" type="checkbox"/> Enable the delivery of On-Demand Tokencodes using SMS service
<input type="checkbox"/> User Attribute to Provide SMS Destination: *	-- Choose One --
<input type="checkbox"/> Default country code:	-- Select Country Code --
<input type="checkbox"/> SMS Plug-In:	* HTTP Which SMS plug-in is appropriate?



SMS Provider Configuration

- Copy the following line into Base URL field and replace <hostname> with the hostname of your swiftSMS server.
`http://<hostname>/swiftsms/sendsms.aspx`
- Click Import Certificate to browse to and install an SMS certificate if you are configuring your base for HTTPS.
- Select GET from the HTTP Method drop-down menu.
- Copy the following string into the Parameters field.
`uid=$cfg.user&pwd=$cfg.password&text=$msg.message&to=$msg.address&connid=1&conn=modem`
- Enter Account User Name for the SMS Provider.
- Enter Account Password for the SMS Provider.
- Copy the following line into the Success Response Code field.
`TRUE`
- Copy the following line into the Response Format field.
`.*`

SMS Provider Configuration	
Base URL:	<input type="text"/> * <small>RSA recommends using HTTPS to increase security.</small>
Certificate Name:	<input type="button" value="Import Certificate"/> (If you enter an HTTPS Base URL, you must import a certificate.)
HTTP Method:	GET
Parameters:	<input type="text"/> *
Account User Name:	<input type="text"/> *
Account Password:	<input type="text"/> *
Connection Timeout:	5000 milliseconds
Success Response Code:	<input type="text"/> *
Response Format:	<input type="text"/> *

SMS HTTP Proxy Configuration (optional)

Enter the configuration settings for your HTTP Proxy server if you are using one.

SMS HTTP Proxy Configuration	
Proxy Hostname:	<input type="text"/>
Proxy Port:	<input type="text"/>
Proxy User:	<input type="text"/>
Proxy Password:	<input type="text"/>

Click Update to save the SMS Configuration.



Partner Product Configuration

Before You Begin

This section provides instructions for configuring the Logix Mobile swiftSMS server with RSA HTTP Plug-In to deliver on-demand tokencodes. This document is not intended to suggest optimum installations or configurations.

It is assumed that the reader has both working knowledge of all products involved, and the ability to perform the tasks outlined in this section. Administrators should have access to the product documentation for all products in order to install the required components.

All Logix Mobile swiftSMS components must be installed and working prior to the integration. Perform the necessary tests to confirm that this is true before proceeding.

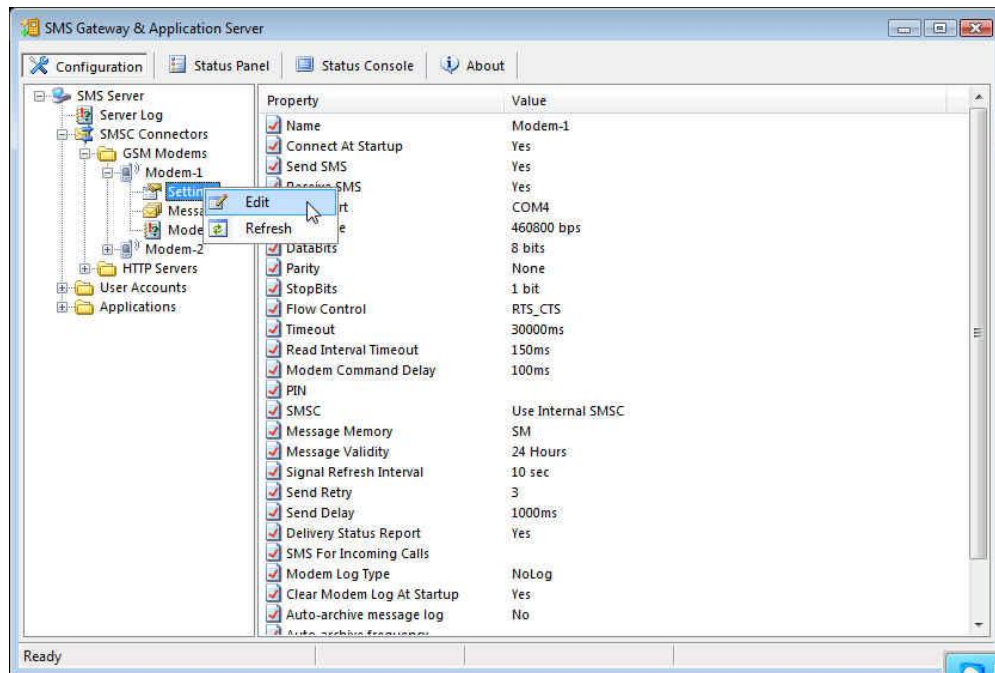
Configure Logix Mobile swiftSMS for use with RSA HTTP Plug-In

A default swiftSMS SMS Gateway and Application Server installation includes all of the components necessary for integrating with RSA SMS HTTP Plug-In. Complete the following steps to configure Logix Mobile swiftSMS for use with RSA HTTP Plug-In.

- **Configure Modem Communication Settings** - Configure the swiftSMS server for communication with the directly attached GSM modem.
- **Configure a User** - Add a user to the swiftSMS server that RSA SMS HTTP Plug-In will use for authentication to the swiftSMS server.

Configure Modem Communications Settings

1. Browse to **Configuration > SMS Server > SMSC Connectors > GSM Modems > Modem-1 > Settings**.
2. Right-click on **Settings** and click **Edit**.





3. Open the **Communication** tab, configure the serial port settings for your GSM modem and click **Save** to save your settings.

The screenshot shows the 'Modem-1' configuration window with the 'Communication' tab selected. The 'Serial Port Settings' section includes:

- Port: COM4
- Data Bits: 8
- Baud Rate: 460800
- Parity: None
- Flow Control: Hardware
- Stop Bits: 1

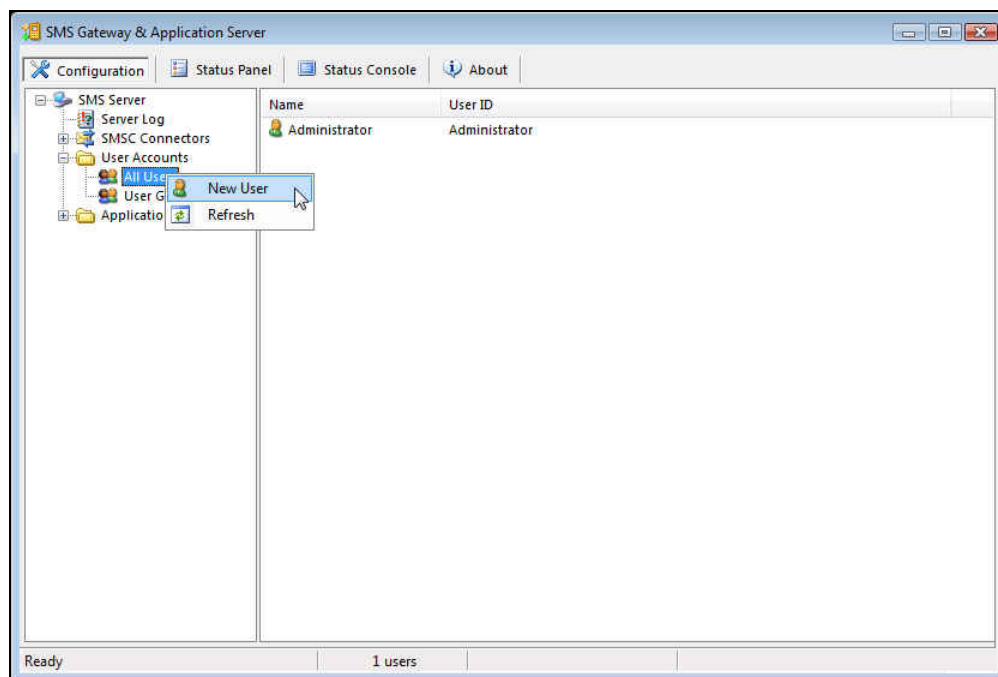
The 'Timeouts' section includes:

- Timeout (ms): 30000
- Read Interval Timeout (ms): 150
- Modem Command Delay (ms): 100

Buttons for 'Save' and 'Cancel' are visible at the bottom right.

Configure a User

1. Browse to **Configuration > SMS Server > User Accounts > All Users**.
2. Right-click **All Users** and click **New User**.





3. In the **User Information** tab, fill in the **Full Name** and **Login Information** fields.

New User

User Information | Contact Information | Member Of | Rights


Full Name

First Name: Middle Name: Last Name:
First Middle Last

Login Information

User ID: Password: Retype Password:
rsauser

Save Cancel

 **Note:** The Login Information User ID and Password fields correspond to Account Username and Account Password fields in the SMS Provider Configuration section of the RSA SMS HTTP Plug-In.

4. Open the **Rights** tab, mark the checkbox for **Allow swiftCommand & swiftMessage Login** and click **Save**.

Edit User

User Information | Contact Information | Member Of | Rights

User Blocked

Allow swiftMessenger Login

Allow Local swiftMessenger Address Book

Allow swiftCommand & swiftMessage Login

Allow unlimited SMS

Delete Save Cancel

Your Logix Mobile swiftSMS server is now configured for use with RSA SMS HTTP Plug-In.



Certification Checklist for RSA HTTP Plug-In

Date Tested: December 21, 2010

Certification Environment		
Product Name	Version Information	Operating System
RSA Authentication Manager	7.1 SP4	Windows Server 2003
RSA Authentication Agent	6.1.1	Windows XP Pro
swiftSMS	4.1.17	Windows Vista Business

Mandatory Functionality	
SMS Message Delivered	<input checked="" type="checkbox"/>
On-Demand Authentication with SMS tokencode	<input checked="" type="checkbox"/>
Success Code Received by HTTP Plug-In	<input checked="" type="checkbox"/>

PEW

✓ = Pass ✗ = Fail N/A = Not Applicable to Integration