



Allscripts®

RSA SECURID® ACCESS

Standard Agent Implementation Guide

Allscripts Helios 16.3

FAL RSA Partner Engineering
Last Modified: 9/7/16

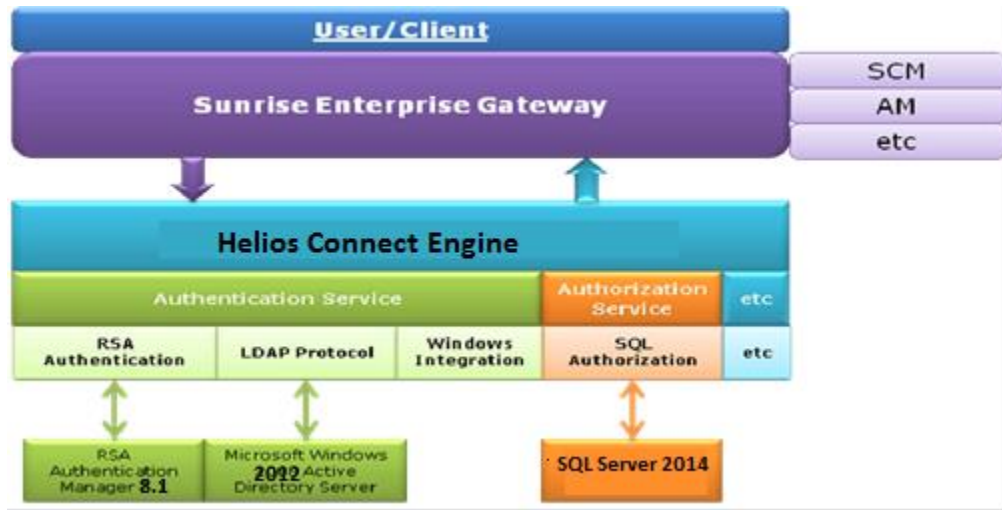
RSA
READY

Solution Summary

Helios by Allscripts is a unique, open platform strategy to deliver vendors choice and flexibility by enabling clients and certified third-parties to natively integrate their applications with Allscripts' enterprise solutions. The introduction of Helios by Allscripts™ is packaged with the new release of Allscripts' Sunrise Enterprise, which features a rich suite of solutions wrapped in a highly intuitive user interface.

The Allscripts Gateway supports RSA SecurID two-factor authentication, which can be activated and applied via the Helios Security Server. Helios administrators can require all users within an enterprise to authenticate with RSA SecurID tokens or chose to limit this requirement to specific environments or workstations.

RSA Authentication Manager supported features	
<Partner Product Name and version>	
RSA SecurID Authentication via Native RSA SecurID UDP Protocol	Yes
RSA SecurID Authentication via Native RSA SecurID TCP Protocol	No
RSA SecurID Authentication via RADIUS Protocol	No
RSA SecurID Authentication via IPv6	No
On-Demand Authentication via Native SecurID UDP Protocol	Yes
On-Demand Authentication via Native SecurID TCP Protocol	No
On-Demand Authentication via RADIUS Protocol	No
Risk-Based Authentication	No
RSA Authentication Manager Replica Support	Yes
Secondary RADIUS Server Support	Yes
RSA SecurID Software Token Automation	No
RSA SecurID SD800 Token Automation	No
RSA SecurID Protection of Administrative Interface	Yes



RSA Authentication Manager Configuration

Agent Host Configuration

Agent Host Records contain information that allows an RSA Authentication Manager server to locate its clients and establish secure communication channels with them. The server's database must contain an Agent Host Record to identify each Helios by Allscripts™ host in a given environment.

The following information is required in order to create an Agent Host record:

- A hostname
- An IP addresses for all network interfaces

When adding an Agent Host Record, set the Authentication Agent Type to a "Standard Agent". This setting is used by the RSA Authentication Manager server to determine how it will communicate with Helios by Allscripts™. Please refer to the appropriate RSA documentation for additional information about creating, modifying and managing Agent Host Records.

! > Important: The UDP-based authentication agent's hostname must resolve to the IP address specified.

Include the following information when configuring a TCP-based agent host record.

- RSA agent name (in the hostname field)

! > Important: The RSA agent name is specified in the `rsa_api.properties` file.

The following information is required to create a RADIUS client:

- Hostname
- IP Addresses for network interfaces
- RADIUS Secret

! > Important: The RADIUS client's hostname must resolve to the IP address specified.

Please refer to the appropriate RSA documentation for additional information about creating, modifying and managing Authentication Agents and RADIUS clients.

Partner Product Configuration

Before You Begin

This section provides instructions for enabling RSA SecurID two-factor authentication for Helios by Allscripts™. This document is not intended to suggest optimum installations or configurations. It is assumed that the reader has both working knowledge of all products involved and the ability to perform the tasks outlined in this section. Administrators should have access to the appropriate documentation for all products in order to install the required components.

All Allscripts products/components must be installed and working prior to the integration. Please perform the necessary tests to confirm that this is true before proceeding.

Configuring Helios by Allscripts™ for RSA SecurID Authentication

The Allscripts Gateway Security Server can be configured to require users to authenticate with RSA SecurID tokens. Allscripts administrators can apply this requirement to users at any of the following three scopes:

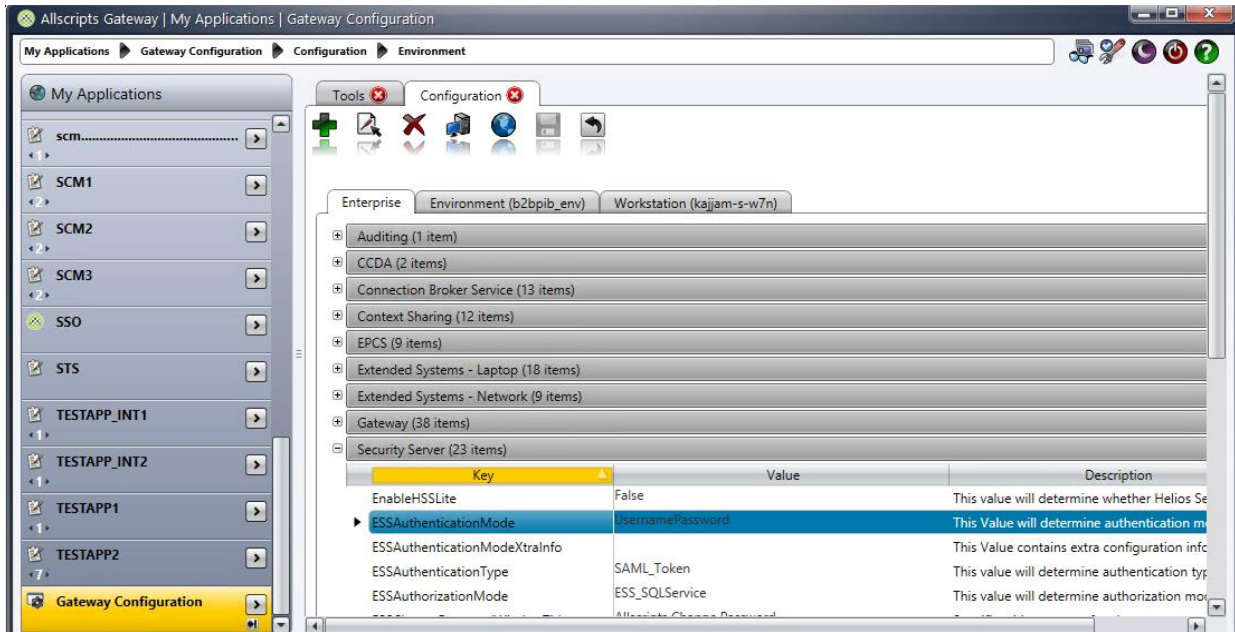
- **Workstation** – This scope only covers user access to a single device.
- **Environment** – This scope covers user access to a specific Helios Connect environment*.
- **Enterprise** – This scope applies to all users in an enterprise.

Configure the Allscripts Gateway Security Server

In order to enable RSA SecurID two-factor authentication for Helios by Allscripts™, follow the steps below to set the authentication mode via the Allscripts Gateway Security Server:

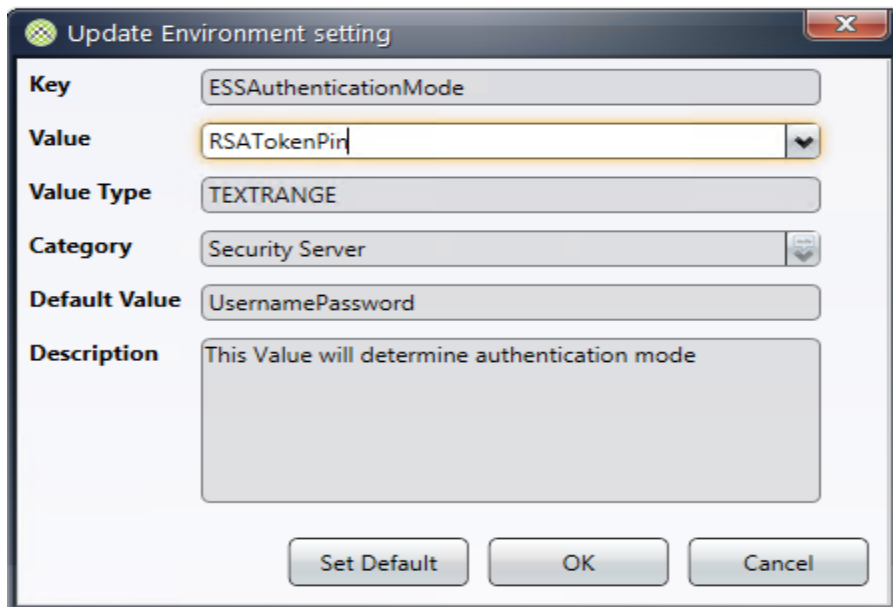
1. Log on to the Allscripts Gateway and go to *My Application -> Gateway Configuration -> Configuration > Environment*.
2. Select the appropriate tab (*Enterprise, Environment* or *Workstation*) based on the desired user scope as described above.
3. Select Security Server items.

* Please refer to the appropriate Allscripts documentation for more information about environments.



Configure the Allscripts Gateway Security Server (continued)

4. Open the *ESSAuthenticationMode* key in update mode and change its value to "RSATokenPin".

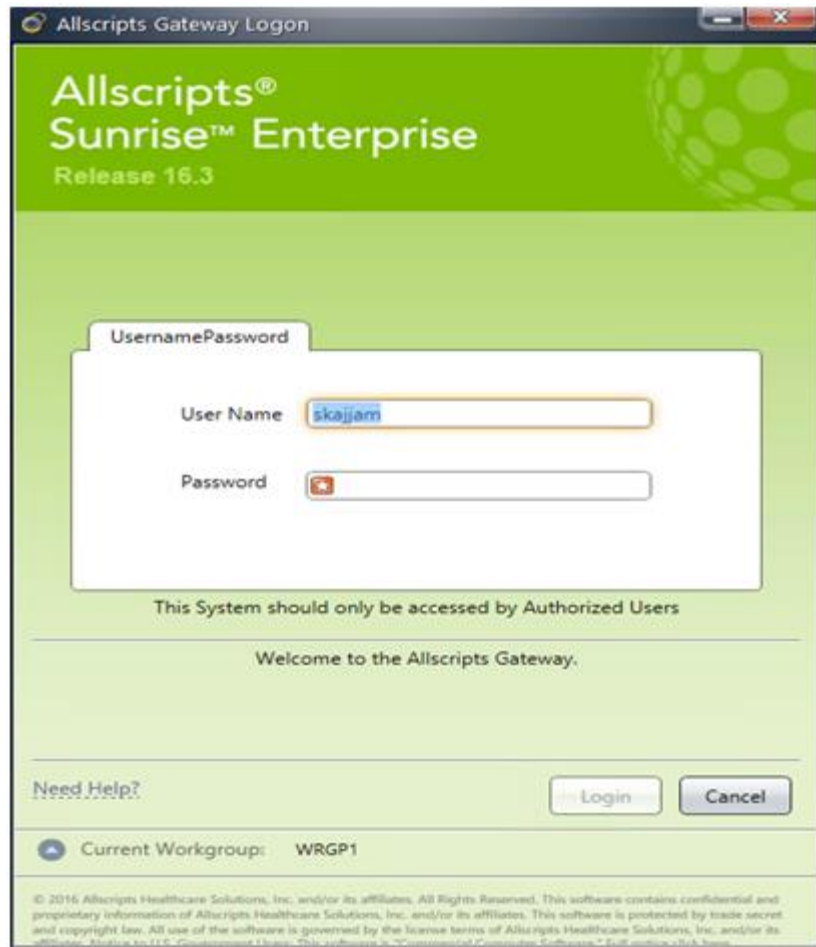


5. Click the OK button.

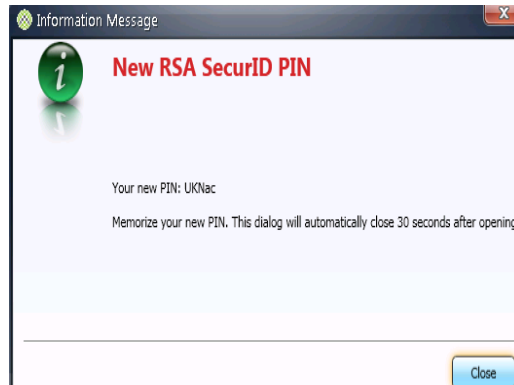
Configure RADIUS Authentication

RSA SecurID Login Screens

Desktop



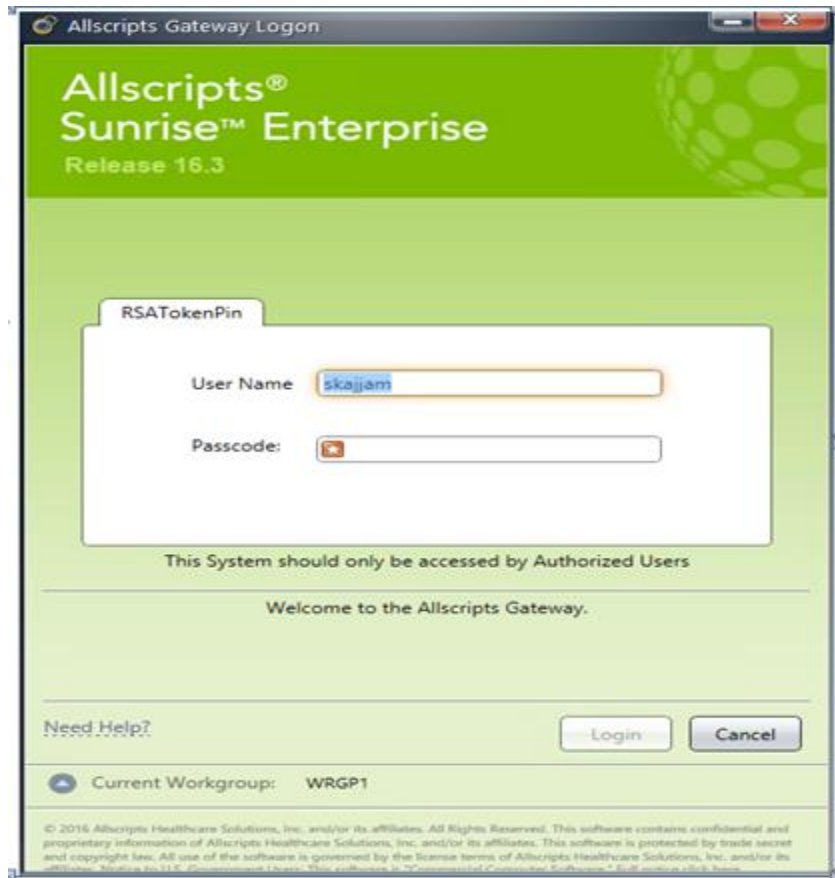
System-generated New PIN:



User-defined New PIN:



Next Token Code:



The screenshot shows a Windows-style window titled "Allscripts Gateway Logon". The window has a green header with the Allscripts logo and the text "Allscripts® Sunrise™ Enterprise Release 16.3". Below the header is a white login form with a tab labeled "RSATokenPin". The form contains two input fields: "User Name" with the text "skajjam" and "Passcode:" with a red eye icon. Below the form is a warning message: "This System should only be accessed by Authorized Users". Underneath is a welcome message: "Welcome to the Allscripts Gateway." At the bottom of the form are "Login" and "Cancel" buttons. Below the form, there is a "Need Help?" link and "Current Workgroup: WRGP1". At the very bottom, there is a small copyright notice: "© 2016 Allscripts Healthcare Solutions, Inc. and/or its affiliates. All Rights Reserved. This software contains confidential and proprietary information of Allscripts Healthcare Solutions, Inc. and/or its affiliates. This software is protected by trade secret and copyright law. All use of the software is governed by the license terms of Allscripts Healthcare Solutions, Inc. and/or its affiliates. Motion for U.S. Government Use: This software is "Commercial Computer Software" Full motion click here."

Certification Checklist for RSA SecurID Access

Date Tested:8/20/16

Certification Environment		
Product Name	Version Information	Operating System
RSA Authentication Manager	8.1	Virtual Appliance
RSA Authentication Agent	6.1.0	Windows
RSA Software Token	5.0.0	Windows
Helios by Allscripts™	8.2	Windows 2012 R2 Server
Helios Sunrise Gateway	16.3	Windows 2012 R2 server

RSA SecurID Authentication

Date Tested:8/20/16

Mandatory Functionality	Native UDP	Native TCP	RADIUS Client
New PIN Mode			
Force Authentication After New PIN	✓	N/A	N/A
System Generated PIN	✓	N/A	N/A
User Defined (4-8 Alphanumeric)	✓	N/A	N/A
User Defined (5-7 Numeric)	✓	N/A	N/A
Deny 4 and 8 Digit PIN	✓	N/A	N/A
Deny Alphanumeric PIN	✓	N/A	N/A
Deny PIN Reuse	✓	N/A	N/A
Passcode			
16 Digit Passcode	✓	N/A	N/A
4 Digit Fixed Passcode	✓	N/A	N/A
Next Tokencode Mode			
Next Tokencode Mode	✓	N/A	N/A
On-Demand Authentication			
On-Demand Authentication	✓	N/A	N/A
On-Demand New PIN	✓	N/A	N/A
Load Balancing / Reliability Testing			
Failover (3-10 Replicas)	✓	N/A	N/A
No RSA Authentication Manager	✓	N/A	N/A

✓ = Pass ✗ = Fail N/A = Non-Available Function

Certification Checklist for RSA SecurID Access

Appendix

RSA SecurID Authentication Files

RSA SecurID Authentication Files	
UDP Agent Files	Location
sdconf.rec	C:\WINDOWS\system32 or C:\Program Files (x86)\Allscripts
sdopts.rec	N/A
Node secret	C:\WINDOWS\system32
sdstatus.12 / jastatus.12	'None stored', 'In Memory' or path to sdstatus.12 file
TCP Agent Files	Location
rsa_api.properties	N/A
sdconf.rec	N/A
sdopts.rec	N/A
Node secret	N/A