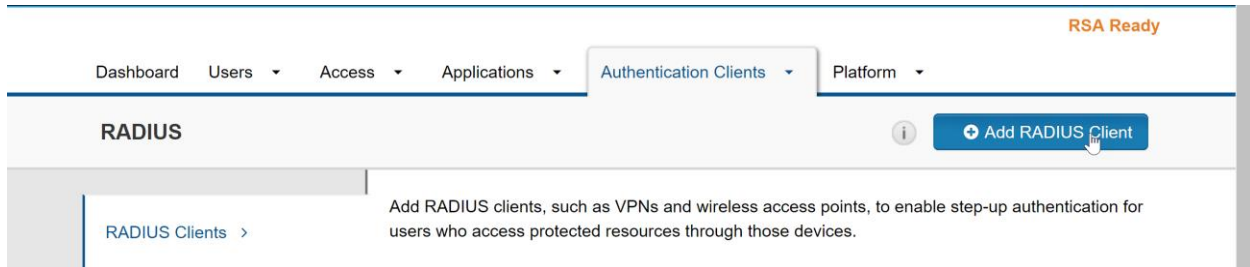


RSA SecurID Access Free Trial CyberArk PVWA Guide

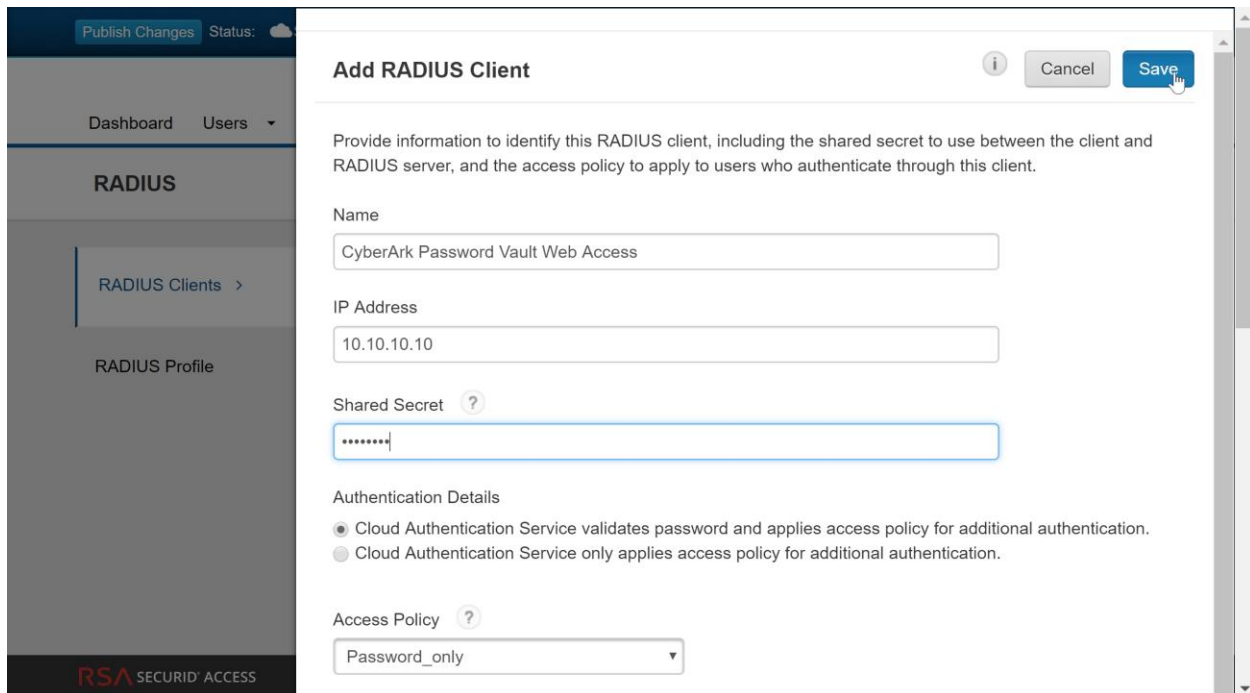
This guide describes how to set up CyberArk Password Vault Web Access (PVWA) as part of the RSA SecurID Access Free Trial program. Use this guide in conjunction with the RSA SecurID Access Free Trial Quick Setup Guide.

Complete RSA SecurID Access Configuration

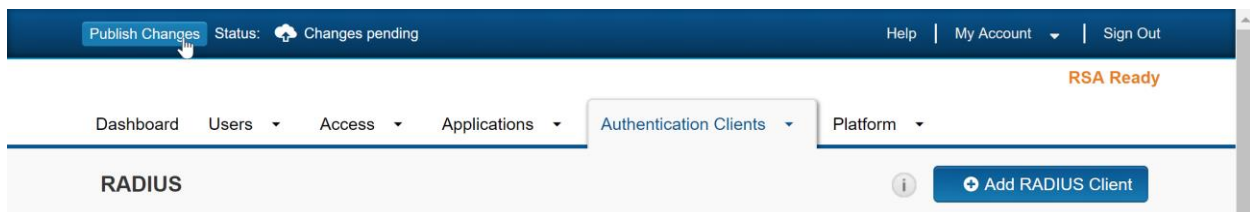
1. Log in to the RSA Cloud Administration Console and browse to **Authentication Clients** > **RADIUS**, then click **Add RADIUS Client**.



2. Configure the RADIUS Client settings and click **Save**.



3. Click **Publish Changes**.



Complete CyberArk Password Vault Web Access Configuration

Configure RADIUS connection settings on Password Vault server

1. Log on to the desktop of the Password Vault server.
2. Open the command prompt and enter the following command:

```
"C:\Program Files (x86)\PrivateArk\Server\CAVaultManager.exe" SecureSecretFiles /SecretType Radius /Secret myradiussecret /SecuredFileName "C:\Program Files (x86)\PrivateArk\Server\myradiussecret.dat"
```

3. Open the **DBParm.ini** file and add the following parameters on a single line, separated by semicolons.

```
RadiusServersInfo  
RADIUS Server IP address  
RADIUS Server Authentication Port  
RADIUS Client Name (vault machine as entered in the RADIUS server)  
Path to SecuredFileName
```

Example:

```
RadiusServersInfo=1.1.1.250;1812;vaulthostname;myradiussecret.dat
```

4. Set the **DefaultTimeout** value to 60 seconds.
5. Save the file and restart the Password Vault server.

Configure a RADIUS user on Password Vault server

1. Logon to the vault as an administrative user.
2. Browse to **Tools > Administrative Tools > Users and Groups** and **Add** or **Update** an account to use with RADIUS authentication.
3. Open the **Authentication** tab of the user profile, select **RADIUS Authentication** from the Authentication method drop-down menu and click **OK**.

Configure Access through PVWA

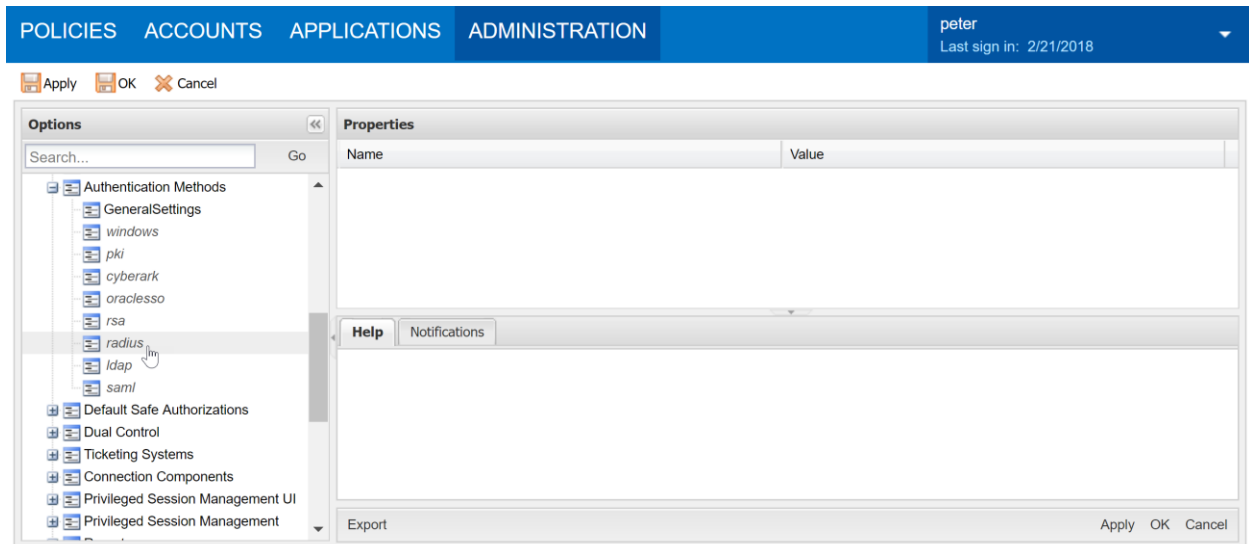
1. Log onto the PVWA as an Administrator.
2. Click **ADMINISTRATION** to display the System Configuration page.
3. Click **Options**.

The screenshot shows the Password Vault Administration console interface. At the top, there is a navigation bar with tabs for POLICIES, ACCOUNTS, APPLICATIONS, and ADMINISTRATION. The ADMINISTRATION tab is selected. In the top right corner, the user 'peter' is logged in, with the last sign-in time being 2/21/2018. Below the navigation bar, there is a 'Setup Wizard' icon and a 'Customize' button. The main content area is titled 'System Configuration'. It features a table with the following data:

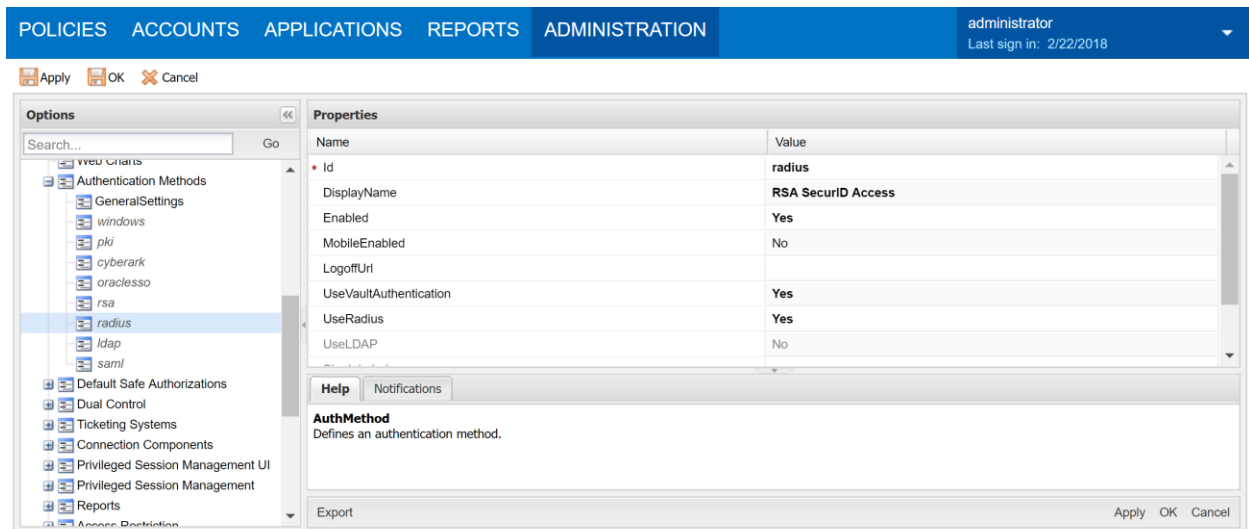
Component Settings		
Name	Component	
Options	Web Access	
Safe Templates	Web Access	
LDAP Integration	Vault	
Notification Settings	Vault	
Platform Management	Platform Management	

At the bottom of the table, there is an 'Export All ...' link. Below the table, there is a 'Central Policy Manager' section with a dropdown menu set to 'PasswordManager' and two links: 'CPM Settings' and 'Auto-detection'.

4. Open the **Authentication Methods** menu and click **radius**.



5. Configure the RADIUS properties and click **OK**.



- **DisplayName** – Enter the value the display name for this authentication method.
- **Enabled** – Set to Yes
- **UseVaultAuthentication** – Set to Yes
- **UseRadius** – Set to Yes